



Meeting #4

District Updates

Kit Black, P.E., Amarillo District Director of Transportation, Planning and Development

Michael Haithcock, P.E., Abilene District Director of Transportation, Planning and Development

Steven Warren, P.E., Lubbock District Engineer

Chris Cowen, P.E., San Angelo District Engineer

Robert Ornelas, P.E., Odessa District Director of Transportation, Planning and Development

Epi Gonzalez, P.E., Laredo District Engineer



April 13, 2023



Meeting #4

Amarillo District Update

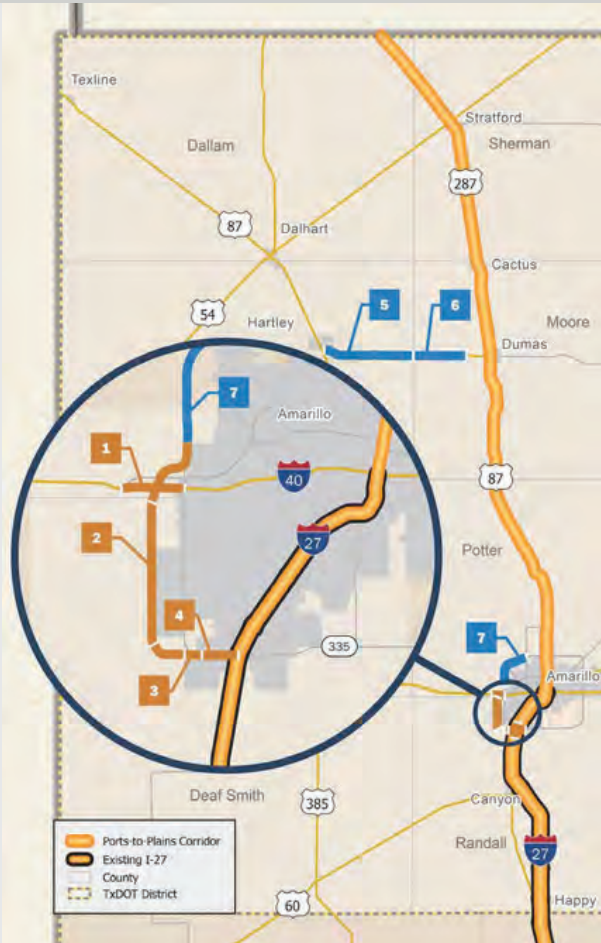
Kit Black, P.E.

Amarillo District Director of Transportation, Planning and Development



April 13, 2023

Amarillo District

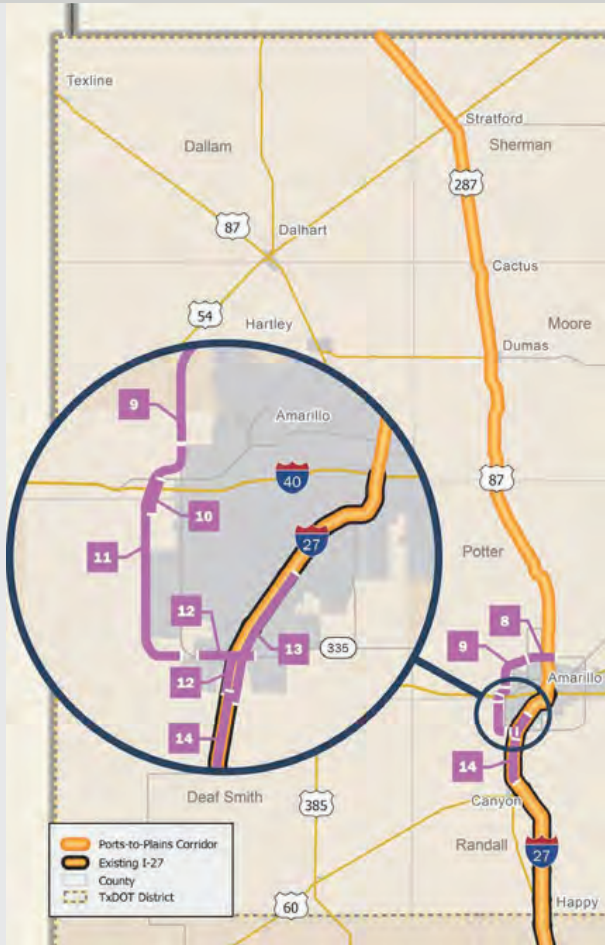


PROJECTS UNDER CONSTRUCTION										
#	CSJ	HWY	Limits	Description	Project Stage ¹	Let Year	Est Cst Cost ²	CAT Funding ⁴	Funding Status	Funding Gap
1	0275-01-199*	IH 40/SL 335	BI 40-D to FM 2590	SL 335/I-40 West Interchange Phase I Construct Frontage Roads for Future Freeway	CST	2020	\$50.03 M	\$50.03 M	Full	—
2	2635-08-001 ¹	SL 335	FM 2590 to IH 40	Segment B-2 Phase I Construct Frontage Roads for Future Freeway	CST	2019	\$45.8 M	\$45.8 M	Full	—
3	2635-03-024	SL 335	FM 2590 to West of Coulter	Convert Non-Freeway to Freeway	CST	2021	\$26.0 M	\$26.0 M	Full	—
4	2635-03-018*	IH 27/SL 335	West of Coulter St to IH 27	SL 335/I-27 Interchange Phase I Convert Non-Freeway to Freeway	CST	2017	\$42.4 M	\$42.4 M	Full	—
Total							\$164.2 M	\$164.2 M		—

PROJECTS IN 2023 UTP										
#	CSJ	HWY	Limits	Description	Project Stage ¹	Let Year	Est Cst Cost ²	CAT Funding ³	Funding Status	Funding Gap
5	0425-01-021	US 87	East of US 385/US 7 Interchange to Moore County Line	Construct 4 Lane Divided Highway	PS&E	2026	\$81.4 M	\$84.4 M	Full	—
6	0425-02-037	US 87	Hartley County Line to FM 2589 West of Dumas		PS&E	2025	\$38.3 M	\$39.8 M	Full	—
7	2635-04-031	SL 335	SW 9TH to FM 1719	G-1 Phase I Upgrade to 4-Lane Divided from SW 9th to RM 1061, Upgrade to Freeway from RM 1061 to FM 1719	PS&E	2023	\$96.0 M	\$96.9 M	Full	—
Total							\$215.7 M	\$221.1 M		—

1 Project Stage Key: CST = Construction; P = Planning; PE = Preliminary Engineering (studies have begun including environmental, surveys, traffic, etc.); PS&E = Developing design (plans, specifications and estimates); R = ready for construction
 2 Construction costs only include construction for a traditional Design-Bid-Build. Low bid amount shown for projects under construction. For other projects, estimated construction cost is based on the Future UTP Minimum Funding amount in the TxDOT Connect database.
 3 Includes total authorized construction funding. For projects not under construction, includes funding from one or more UTP funding category through the 2023 UTP.
 4 Table information based on Contract CSJ (CCSJ).

Amarillo District



FUTURE POTENTIAL PROJECTS UNFUNDED OR PARTIALLY FUNDED

#	CSJ	HWY	Limits	Description	Project Stage ¹	Let Year	Est Cst Cost ²	CAT Funding ³	Funding Status	Funding Gap	
8	—	SL 335	FM 1719 (Western St) to Echo St	Segment C-2 Convert Non-Freeway to Freeway	PE	2035	\$153.0 M	—	None	\$153.0 M	
9	—	SL 335	SW 9th to FM 1719 (Western St)	Segment C-1 Mainlanes Phase II Construct Freeway Mainlanes	PS&E	2028	\$150.3 M	—	None	\$150.3 M	
10	—	SL 335	N of 34th to N of BI 40-D	SL 335/IH 40 Interchange Phase II Construct SL 335 Mainlanes	PS&E	2028	\$49.7 M	—	None	\$49.7 M	
11	—	SL 335	FM 2590 (Soncy Rd) to SW 9th	Segment B-2 Mainlanes Phase II Construct Freeway Mainlanes	PS&E	2032	\$145.7 M	—	None	\$145.7 M	
12	2635-02-034 ⁴	SL 335	East of Coulter to IH 27	SL 335/I-27 Interchange Phase II Construct SL 335 3rd Level Bridge At IH 27, 4 New Mainlanes and Ramps	PS&E	2028	\$153.4 M	\$69.6 M	Full	\$89.8 M	
		SL 335	IH 27 to Coulter		PS&E	2028			Partial		
		SL 335	IH 27 to Bell Street		PS&E	2028			Full		
		IH 27	Sundown Lane to SL 335		PS&E	2028			Partial		
13	0168-09-082	IH 27	Western St to South of Sundown	Phase I: Widen Freeway From 4-Lanes to 6-Lanes	PE	2033	\$167.6 M	—	None	\$167.6 M	
14	0168-09-083	IH 27	South of Sundown to North of US 60/ US 87 Interchange	Widen Freeway from 4-lanes to 6-lanes	PS&E	2027	\$146.2 M	\$131.5 M	Partial	\$14.7 M	
	0067-17-032	IH 27	North of US 60/US 87 Interchange to South of US 60/US 87 Interchange	Reconstruct US 60/ US 87 Interchange	PS&E	2027	\$20.8 M	\$20.8 M	Full	—	
							Total	\$986.8 M	\$222.0 M		\$764.8 M
							Grand Total	\$1,366.7 M	\$607.3 M		\$764.8 M

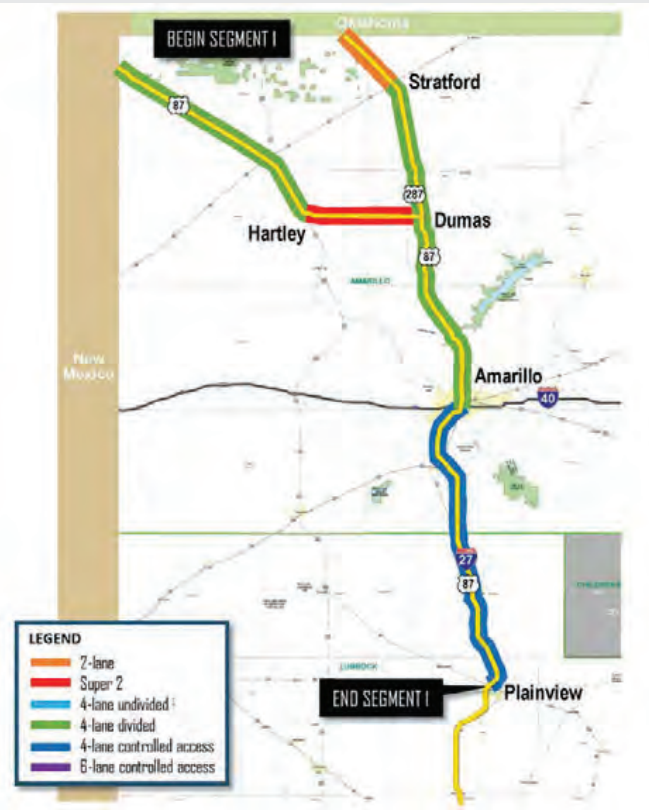
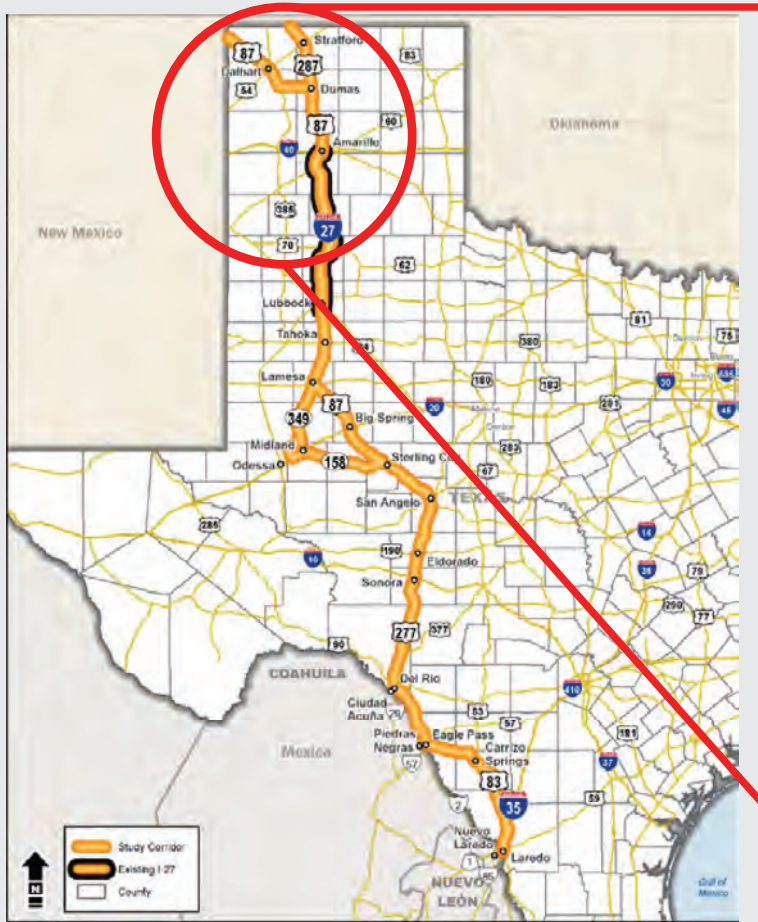
1 Project Stage Key: CST = Construction; P = Planning; PE = Preliminary Engineering (studies have begun including environmental, surveys, traffic, etc.); PS&E = Developing design (plans, specifications and estimates); R = ready for construction

2 Construction costs only include construction for a traditional Design-Bid-Build. Low bid amount shown for projects under construction. For other projects, estimated construction cost is based on the Future UTP Minimum Funding amount in the TxDOT Connect database.

3 Includes total authorized construction funding. For projects not under construction, includes funding from one or more UTP funding category through the 2023 UTP.

4 Table information based on Contract CSJ (CCSJ).

Amarillo District: Project Development Update



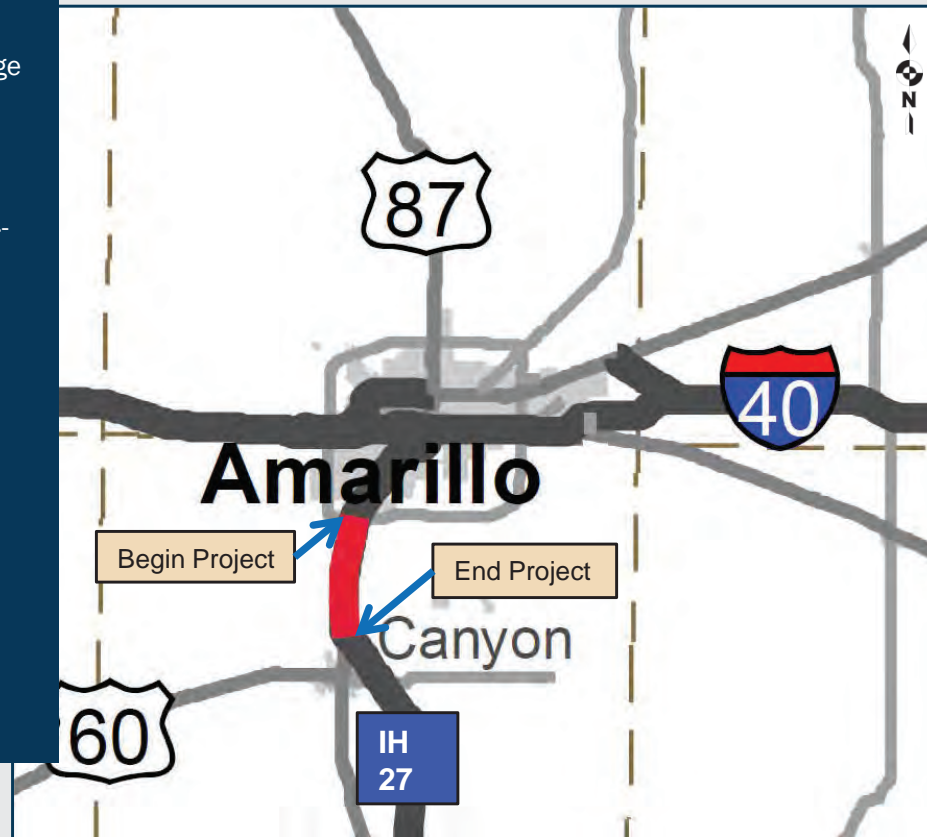
Existing Conditions

Amarillo District: Expansion of Existing I-27



I-27 Randall County

- Project Limits
 - SL 335 to US 60/US 87 Interchange
 - Length: 6.9 miles
- Project Description
 - Phase I: Expand Mainlanes from 4-Lane to 6-Lane Highway
- Est Const Cost (2027): \$261M
- Project Development Status:
 - Sch / Env: Complete
 - Plans: 90%
 - ROW: In progress
 - Utility Relocation: In progress
 - Letting: FY 27
- Available to Let: June 2024



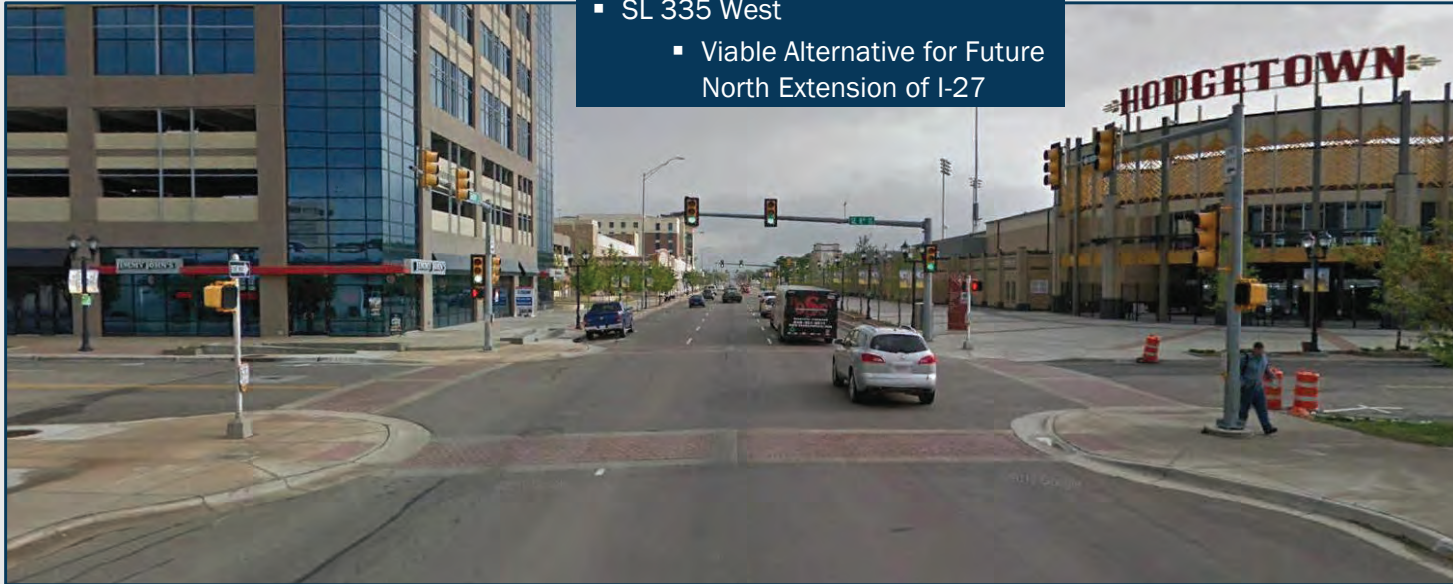
Amarillo District: SL 335 West Expansion – Viable Alternative



- I-27 Existing Terminates at I-40
 - South side of Downtown Amarillo
- Downtown Amarillo
 - US 87: One-Way Dispersal Streets

- Downtown Challenges
 - Pedestrians
 - Access Management
 - Low Mobility
 - Constrained ROW

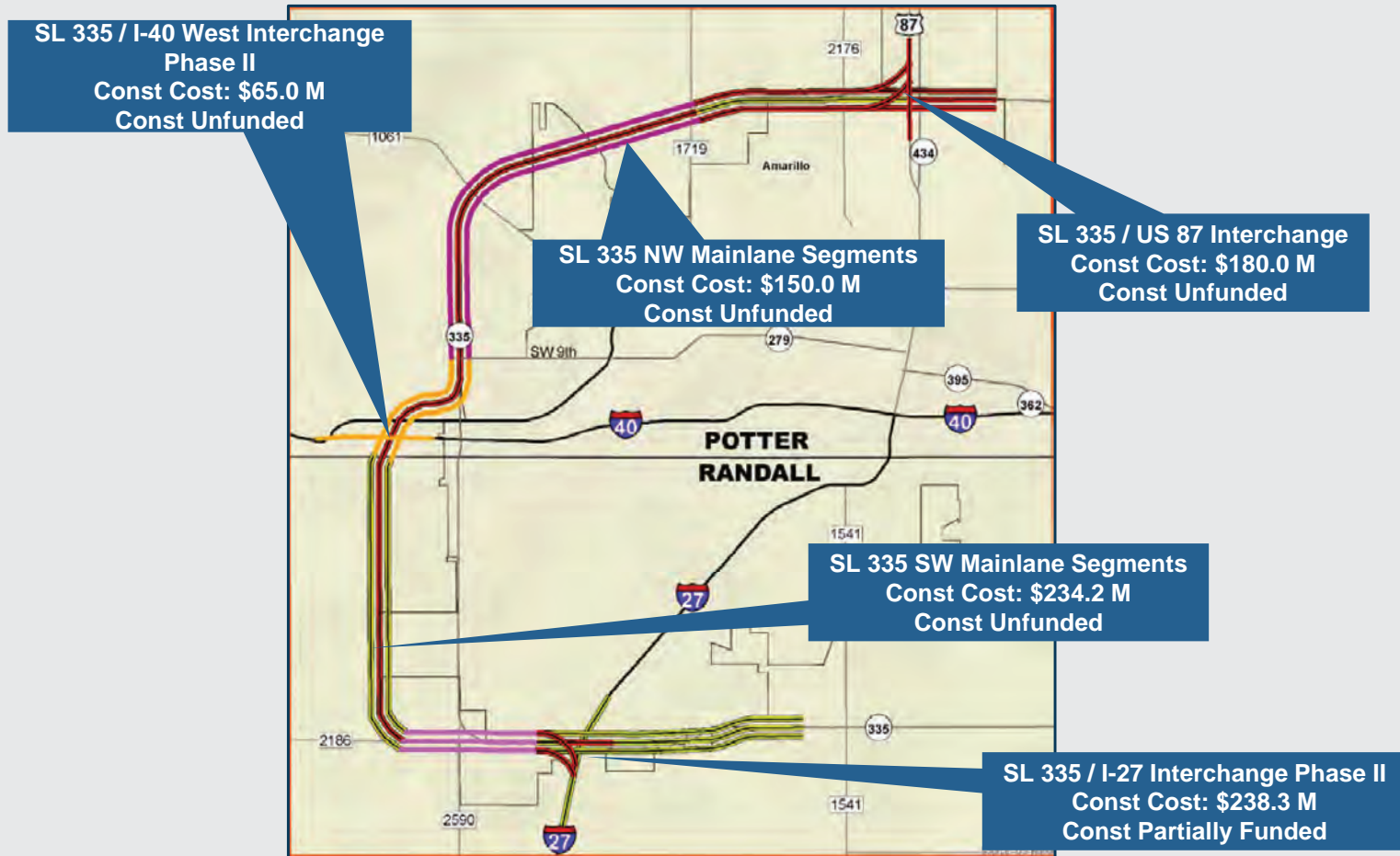
- SL 335 West
 - Viable Alternative for Future North Extension of I-27



Amarillo District: SL 335 West Expansion – Progress Made to Date



Amarillo District: SL 335 West – Next Steps

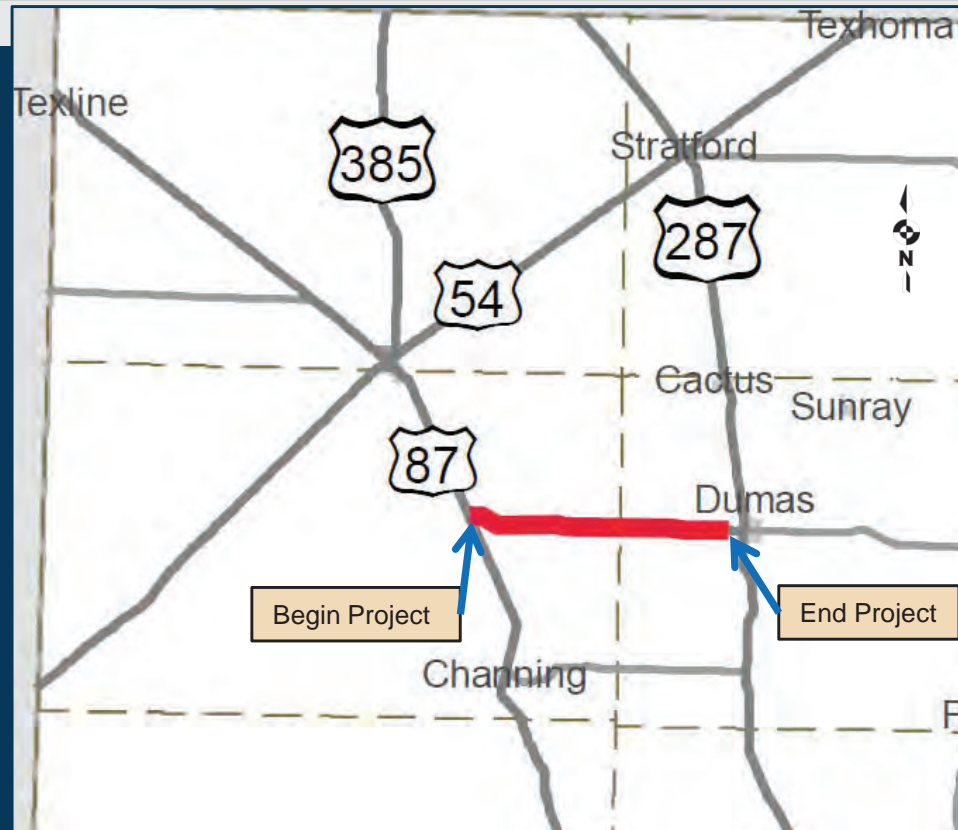


Amarillo District: US 87: Rural Connectivity



US 87 Hartley & Moore Counties

- Project Limits
 - US 385/US 87 Interchange to Dumas
 - Length: 20.0 miles
- Project Description
 - Convert from 2-Lane to 4-Lane Divided Highway
- Est Const Cost (2025): \$153M
- Project Development Status:
 - Sch / Env: Complete
 - Plans: Complete
 - ROW: In progress
 - Utility Relocation: In progress
 - Letting: FY 25
- Available to Let: May 2024





Meeting #4

Abilene District Update

Michael Haithcock, P.E.

Abilene District Director of Transportation, Planning and Development



April 13, 2023

Abilene District



FUTURE POTENTIAL PROJECTS UNFUNDED OR PARTIALLY FUNDED											
#	CSJ	HWY	Limits	Description	Project Stage ¹	Let Year	Est Cst Cost ²	CAT Funding ³	Funding Status	Funding Gap	
1	0069-01-061 ⁴	US 87	2 Miles North of Glasscock CO to Glasscock CO	Construct 4 Lane Divided Highway	PE	2027	\$16.2 M	\$10.5 M	Partial	\$5.7 M	
Total							\$16.2 M	\$10.5 M		\$5.7 M	

1 Project Stage Key: CST = Construction; P = Planning; PE = Preliminary Engineering (studies have begun including environmental, surveys, traffic, etc.); PS&E = Developing design (plans, specifications and estimates); R = ready for construction
 2 Construction costs only include construction for a traditional Design-Bid-Build. Low bid amount shown for projects under construction. For other projects, estimated construction cost is based on the Future UTP Minimum Funding amount in the TxDOT Connect database.
 3 Includes total authorized construction funding. For projects not under construction, includes funding from one or more UTP funding category through the 2023 UTP.
 4 Project is being developed jointly with 0069-02-030 in the San Angelo District



PROGRAM DESCRIPTION

Abilene is studying potential improvements to US 87 to provide a transportation facility which maximizes the existing four-lane divided highway sections north and south of Big Spring.

These potential improvements align with the goals of the 2020 Ports-To-Plains Corridor Interstate Feasibility Study and would improve connectivity, mobility and promote safety.

PLANNED IMPROVEMENTS

A range of preliminary alternatives is being considered. These include:

- Construction of a concrete traffic barrier in the US 87 median to promote safe travel.
- Purchase of Access and Right of Way for the future I-27 Corridor.
- Construction of frontage roads, and diamond interchanges with turnarounds at intersections.

PROJECT FUNDING

Projects are to be proposed Unified Transportation Program and partial construction funding authorized under Category 4: Statewide Connectivity Corridor Projects.

Additional construction funding is needed with source(s) to be determined.



I-27 has always had tremendous Public Support in Big Spring and Howard County

Published: Mar. 20, 2019 at 11:36 PM CDT

On Wednesday afternoon, the Howard County Commissioners Court voiced their approval for another interstate highway to come through Big Spring. The county officials joined their counterparts from the city in support of extending Interstate 27 south from Lubbock.

Currently, I-27 only runs between Amarillo and Lubbock. Officials hope the Federal government extends I-27 south through Lamesa, and have it intersect with I-20 in Big Spring.

"It would help us divert some of this major oilfield traffic off our small roads," Howard County Judge Kathryn Wiseman said. "It will open up a lot of trade, a lot of opportunity for people here in Big Spring."

The potential extension is part of a master plan to have a north-south corridor that runs from border entries like Laredo and Del Rio all the way through West Texas, and up into Colorado.

Published: 3:07 AM CDT July 22, 2015

BIG SPRING, TX (KWES) - The Big Spring Economic Development Corporation (EDC) voted unanimously Tuesday night to pass a resolution backing the possible extension of Interstate 27 through the city, along Highway 87.

Similar resolutions have been passed by the Big Spring City Council, Howard County Commissioners Court, Howard College and other entities.

I-27 currently only stretches between Lubbock and Amarillo, but could ultimately act as a trade route from Canada to the southern tip of Mexico, with Big Spring acting as a key destination along the way. Gregg Street would become Business 87, while relief routes along Highway 87 would be developed into the new section of I-27.

"That would make us the crossroads of the nation," said Gloria McDonald, a Ports-to-Plains Alliance board member pushing for local support of the long-term project.

"They're already building roads and on their way to making it happen [in Mexico]. This would facilitate the transportation of goods and services, and allow for an economic and industrial boom in Big Spring."

Extending I-27 through the city would also make Big Spring home to two interstate highways; one running north-south and another east-west. This infrastructure is currently only found in five Texas cities.

"A lot of major metropolitan areas have two interstates that cross in their communities," said EDC Executive Director Terry Wegman. "This would make Big Spring one of those communities and provide for potential growth and economic development."

Abilene District: US 87



The US 87 Truck Relief Route was completed in July of 2020 and consists of a four-lane rural expressway with a wide median. This corridor, which previously ran through downtown Big Spring handles heavy traffic due to Permian Basin oilfield activity.

The Big Spring Relief Route incorporates a three-level interchange at the Interstate 20 which allows the separation of US 87, IH 20, and frontage road traffic. Drivers are safer and experience less congestion thus allowing everyone to get to destinations faster and easier.

This corridor is currently not limited access, but the Abilene District would like to pursue this for the future I-27 corridor.



Abilene District: US 87



PROJECT OVERVIEW

Abilene and San Angelo Districts

Howard and Glasscock Counties

Highway/Limits: 2 miles north of Glasscock County line to 0.45 mile south of Howard County line

Length: Approximately 2.45 miles

Estimated Construction Cost:

\$11,760,000 (Howard County)
\$2,800,00 (Glasscock County)

CSJ: 0069-01-061 and 0069-02-030

Estimated Letting Date Range:

FY 2027



Meeting #4

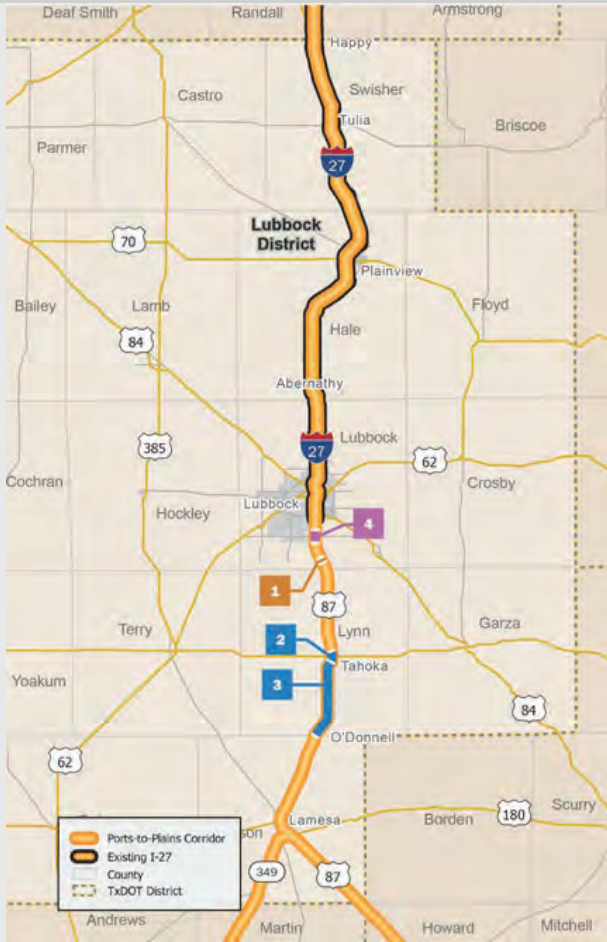
Lubbock District Update

Steven Warren, P.E.
Lubbock District Engineer



April 13, 2023

Lubbock District



PROJECTS UNDER CONSTRUCTION

#	CSJ	HWY	Limits	Description	Project Stage ¹	Let Year	Est Cst Cost ²	CAT Funding ³	Funding Status	Funding Gap
1	0068-01-074	US 87	0.5 MI North of FM 41 to 0.5 MI South of FM 41	New Interchange	CST	2021	\$21.7 M	\$21.7 M	Full	—
							Total	\$21.7 M	\$21.7 M	—

PROJECTS IN 2023 UTP

#	CSJ	HWY	Limits	Description	Project Stage ²	Let Year	Est Cst Cost ²	CAT Funding ²	Funding Status	Funding Gap
2	0068-02-049	US 87	North of SL 472 to South of SL 472	Install Cable Median Barrier	PE	2024	\$0.4 M	\$0.4 M	Full	—
3	0068-03-034	US 87	South SL 472 to South SL 76		PE	2024	\$3.0 M	\$3.0 M	Full	—
							Total	\$3.4 M	\$3.4 M	—

FUTURE POTENTIAL PROJECTS UNFUNDED OR PARTIALLY FUNDED

#	CSJ	HWY	Limits	Description	Project Stage ¹	Let Year	Est Cst Cost ²	CAT Funding ²	Funding Status	Funding Gap
4	0068-01-073	US 87	114th Street to 146th Street	Freeway Operational Improvements	PS&E	2027	\$102.3 M	\$89.6 M	Partial	\$12.7 M
							Total	\$102.3 M	\$89.6 M	\$12.7 M
							Grand Total	\$127.4 M	\$114.7 M	\$12.7 M

1 Project Stage Key: CST = Construction; P = Planning; PE = Preliminary Engineering (studies have begun including environmental, surveys, traffic, etc.); PS&E = Developing design (plans, specifications and estimates); R = ready for construction

2 Construction costs only include construction for a traditional Design-Bid-Build. Low bid amount shown for projects under construction. For other projects, estimated construction cost is based on the Future UTP Minimum Funding amount in the TxDOT Connect database.

3 Includes total authorized construction funding. For projects not under construction, includes funding from one or more UTP funding category through the 2023 UTP.



Meeting #4

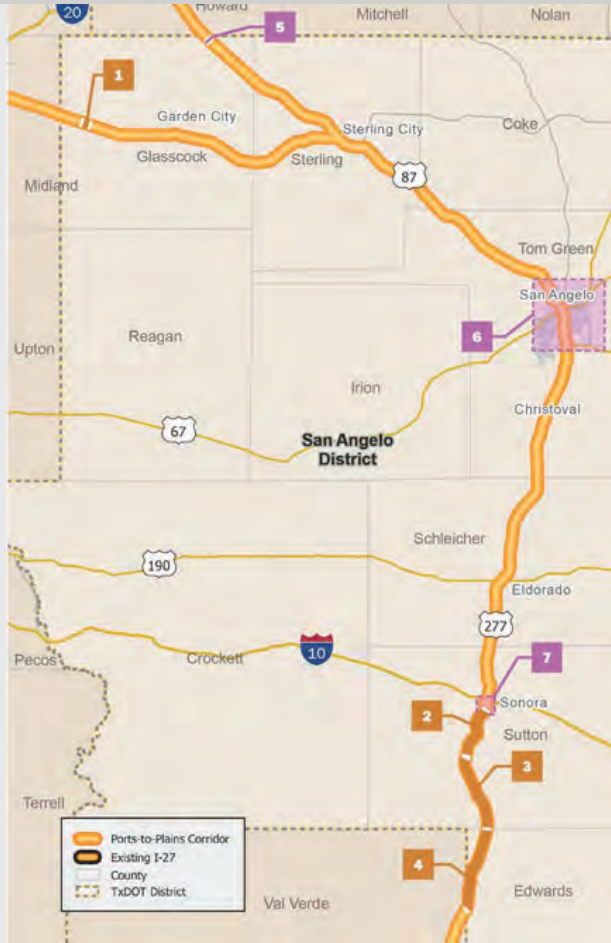
San Angelo District Update

Chris Cowen, P.E.
San Angelo District Engineer



April 13, 2023

San Angelo District

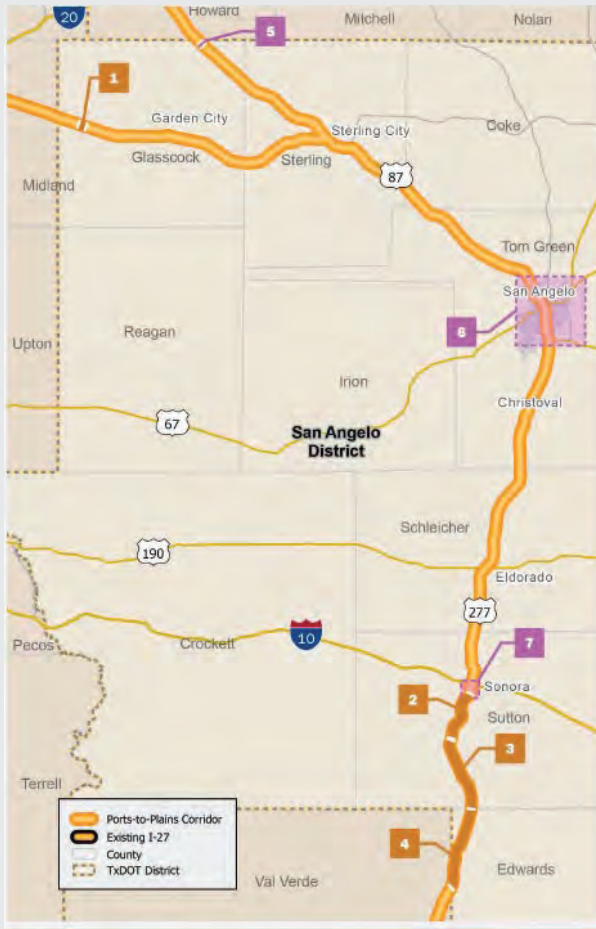


PROJECTS UNDER CONSTRUCTION											
#	CSJ	HWY	Limits	Description	Project Stage ¹	Let Year	Est Cst Cost ²	CAT Funding ³	Funding Status	Funding Gap	
1	0463-04-024	SH 158	At SH 137	Construct Overpass	CST	2021	\$26.9 M	\$26.9 M	Full	—	
2	0160-01-036	US 277	Dry Devils River to 12.275 MI North of Edwards County Line	Add Passing Lanes	CST	2021	\$7.9 M	\$7.9 M	Full	—	
3	0160-02-025	US 277	12.275 MI North of Edwards County Line to Edwards County Line		CST	2021	\$10.4 M	\$10.4 M	Full	—	
4	0160-03-024	US 277	Sutton County Line to Val Verde County Line		CST	2021	\$8.0 M	\$8.0 M	Full	—	
Total							\$53.3 M	\$53.3 M		—	

FUTURE POTENTIAL PROJECTS UNFUNDED OR PARTIALLY FUNDED											
#	CSJ	HWY	Limits	Description	Project Stage ¹	Let Year	Est Cst Cost ²	CAT Funding ³	Funding Status	Funding Gap	
5	0069-02-030 ⁵	US 87	Howard County Line to 0.45 Miles S of Howard County Line	Construct four lane divided highway from a four lane undivided highway	PE	2027	\$3.2 M	\$2.5 M	Partial	\$0.7 M	
6	- ⁴	New	Around East side of San Angelo (study underway)	Relief Route	P	TBD	TBD	—	None	—	
7	- ⁴	New	Around City of Sonora	Relief Route	P	TBD	TBD	—	None	—	
Total							\$3.2 M	\$2.5 M		\$0.7 M	
Grand Total							\$56.5 M	\$55.8 M		\$0.7 M	

1 Project Stage Key: CST = Construction; P = Planning; PE = Preliminary Engineering (studies have begun including environmental, surveys, traffic, etc.); PS&E = Developing design (plans, specifications and estimates); R = ready for construction
 2 Construction costs only include construction for a traditional Design-Bid-Build. Low bid amount shown for projects under construction. For other projects, estimated construction cost is based on the Future UTP Minimum Funding amount in the TxDOT Connect database.
 3 Includes total authorized construction funding. For projects not under construction, includes funding from one or more UTP funding category through the 2023 UTP.
 4 Source: Recently completed relief route feasibility studies by TxDOT San Angelo District
 5 Project is being developed jointly with 0069-01-061 in the Abilene District

San Angelo District – Current Active Construction



1 SH 158 (at SH 137)

Description: Construct overpass
Let Year: 2021
Contracted Value: \$26,934,934
Anticipated Completion: Spring 2024

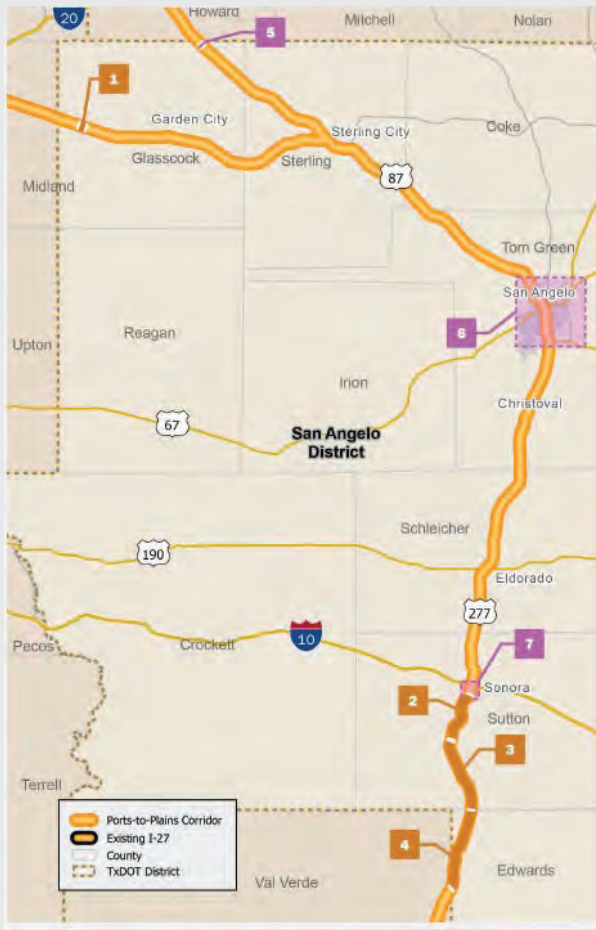
2 US 277 (Dry Devil's River to 12.275 miles north of Edwards County line)

3 US 277 (12.275 miles north of Edwards County line to the Edwards County line)

4 US 277 (Sutton County line to Val Verde County line)

Description: Construct Super 2 passing lanes
Let Year: 2021
Contracted Value: \$27,806,975
Anticipated Completion: Summer 2023

San Angelo District – Projects Under Development



5 US 87 (Howard County line to 0.45 miles south)

Description: Expand to four-lane divided highway

Let Year: 2027

Project Estimate: \$2,500,000

6 San Angelo Relief Route

Description: Develop relief route at San Angelo in concert with Ports-to-Plains Corridor objectives and future Interstate development

Status: Feasibility study completed in FY 2022, schematic development for northern segment scheduled for this fall

Next project segment scheduled for letting:

US 277 (from US 67 to FM 2105)

Description: Expand two-lane roadway to controlled-access freeway

Let Year: 2025

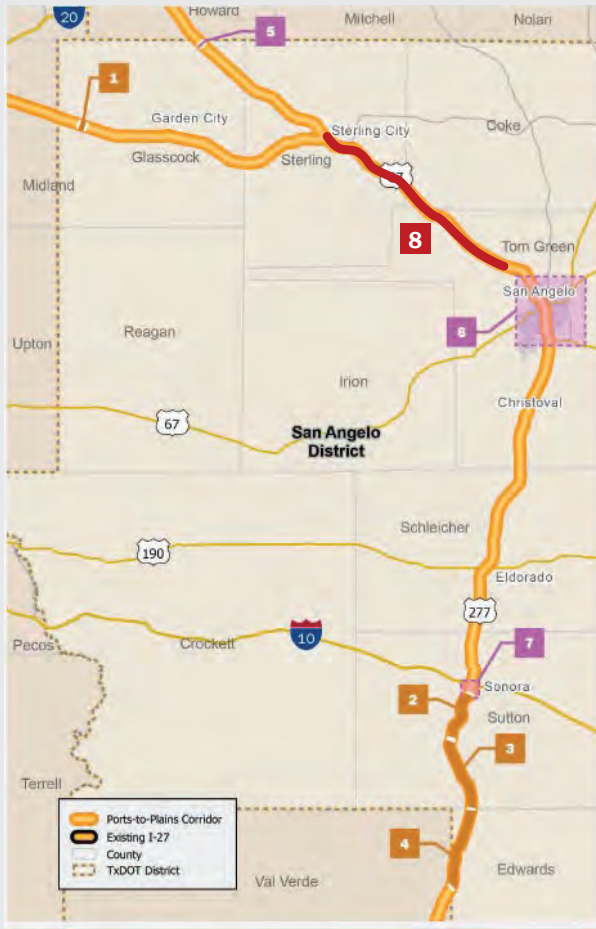
Project Estimate: \$40,000,000

7 Sonora Relief Route

Description: Develop relief route at Sonora in concert with Ports-to-Plains Corridor objectives and future Interstate development

Status: Feasibility study completed in FY 2021

San Angelo District – Upcoming Major Preventive Maintenance Projects



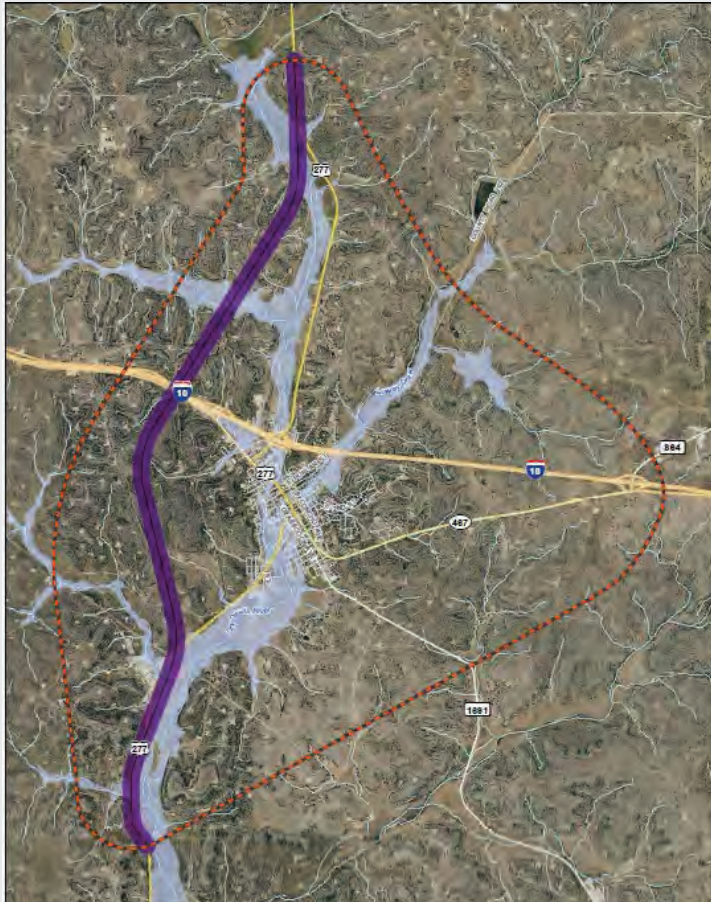
8 US 87 (Sterling City to Grape Creek)

Description: Spot base repair and ACP overlay

Let Year: FY 2024

Contracted Value: \$47,000,000

Sonora Relief Route



Sonora Relief Route Feasibility Study included the following:

- Existing conditions
- Forecasted conditions
- Stakeholder outreach
- Preliminary alternatives (7)
- Alternative screening
- Advancing alternatives (4)
- Public meetings
- Resolution

Completed in November 2020. SJT is seeking UTP authority to advance to schematic development.

San Angelo Northern Relief Route

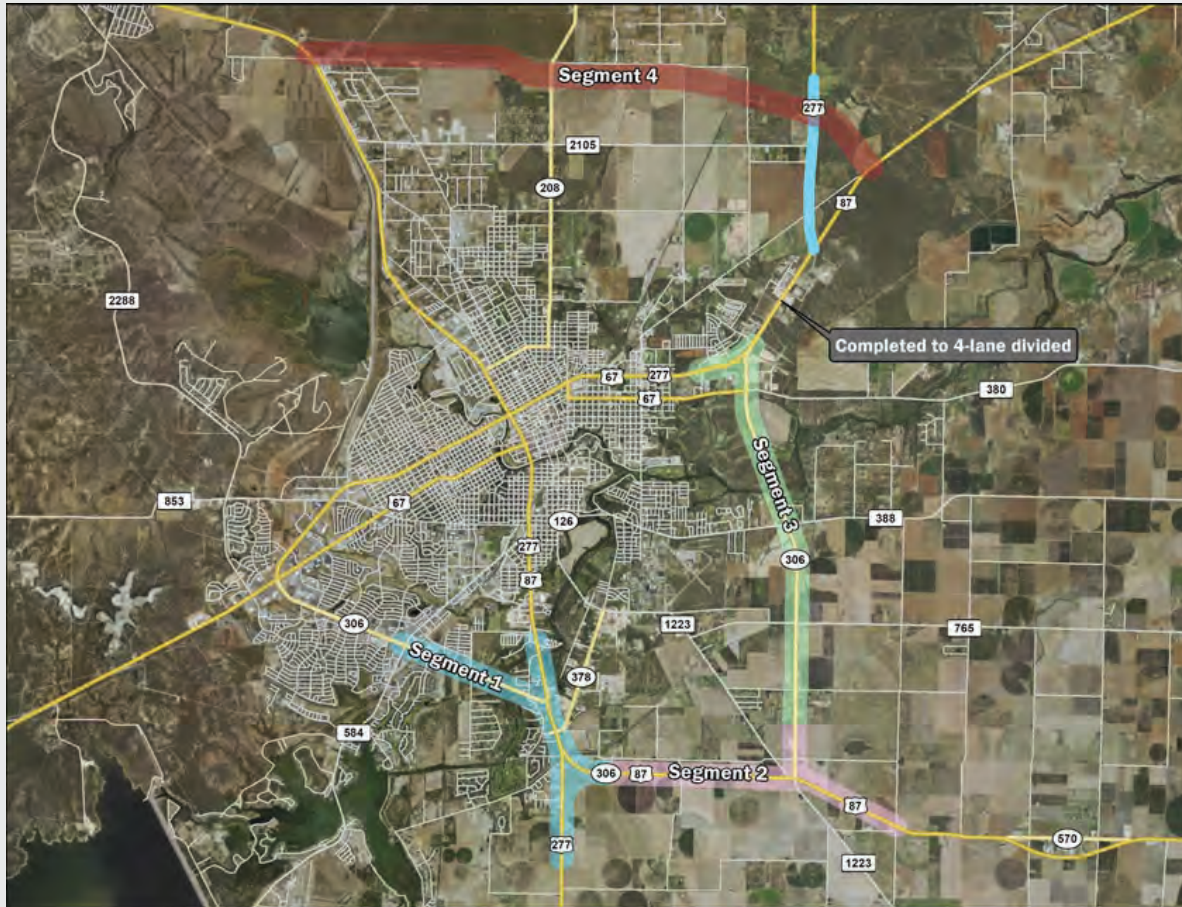


San Angelo Northern Relief Route Study included the following:

- Existing conditions
- Forecasted conditions
- Stakeholder outreach
- Preliminary concepts (8)
- Concept screening
- Public meetings
- Resolutions and letters of support

Completed in December 2022.
Schematic development will proceed this fall.

San Angelo Relief Route Corridor Study Implementation Plan



This study was conducted in February 2023 and identified regional mobility improvement strategies along:

- **US 67**
- **SL 306**
- **US 87**

Improvements were considered to facilitate system linkage and improve contiguous mobility, add capacity, and improve operations and safety.



Meeting #4

Odessa District Update

Robert Ornelas, P.E.

Odessa District Director of Transportation, Planning and Development



April 13, 2023

Odessa District



PROJECTS UNDER CONSTRUCTION										
#	CSJ	HWY	Limits	Description	Project Stage ¹	Let Year	Est. Cost ²	CAT Funding ³	Funding Status	Funding Gap
1	0005-14-100	IH 20	At Cotton Flat Rd	Reconstruction of Frontage Roads, Ramps, U Turns And Interchange	CST	2022	\$68.5 M	\$68.5 M	Full	—
2	0005-14-067	IH 20	SL 250 to 0.5 Miles East Of Midkiff Rd	Replace Existing Underpass with A 4-Lane Wide Overpass Structure, Urban Median, Y-Ramps Configuration	CST	2021	\$36.3 M	\$36.3 M	Full	—
3	0005-14-084	IH 20	At CR 1250	Construct New Interchange	CST	2021	\$59.1 M	\$59.1 M	Full	—
Total							\$163.9 M	\$163.9 M		—

PROJECTS IN 2023 UTP										
#	CSJ	HWY	Limits	Description	Project Stage ¹	Let Year	Est. Cost ²	CAT Funding ³	Funding Status	Funding Gap
4	0005-14-094	IH 20	East of CR 1300 to East of CR 1250	Reconstruction of Frontage Roads, Ramps, U Turns, Interchanges, Convert Frontage Roads to One-Way Operation, Widen From 4 To 6 Lanes	PS&E	2024	\$129.8 M	\$129.8 M	Full	—
5	1718-07-043	SH 349	SH 291 to BI 20-E	Upgrade to Standards Non-Freeway	P	2029	\$7.0 M	\$7.0 M	Full	—
6	1718-01-035	SH 349	BI 20-E to IH 20		P	2029	\$1.4 M	\$1.4 M	Full	—
Total							\$138.2 M	\$138.2 M		—

1 Project Stage Key: CST = Construction; P = Planning; PE = Preliminary Engineering (studies have begun including environmental, surveys, traffic, etc.); PS&E = Developing design (plans, specifications and estimates); R = ready for construction
 2 Construction costs only include construction for a traditional Design-Bid-Build. Low bid amount shown for projects under construction. For other projects, estimated construction cost is based on the Future UTP Minimum Funding amount in the TxDOT Connect database.
 3 Includes total authorized construction funding. For projects not under construction, includes funding from one or more UTP funding category through the 2023 UTP.

Odessa District



FUTURE POTENTIAL PROJECTS UNFUNDED OR PARTIALLY FUNDED										
#	CSJ	HWY	Limits	Description	Project Stage ¹	Let Year	Est Cst Cost ²	CAT Funding ³	Funding Status	Funding Gap
7	0005-15-093	IH 20	East of SH 349 to East of FM 1208	Reconstruction of Frontage Roads, Ramps, U Turns, Interchanges. Convert Frontage Roads to One-Way Operation. Widen From 4 To 6 Lanes	PS&E	2029	\$385.1 M	\$72.0 M	Partial	\$313.1 M
8	0005-14-092	IH 20	East of CR 1250 to East of SH 349	Reconstruction of Frontage Roads, Ramps, U Turns, Interchanges. Convert Frontage Roads to One-Way Operation. Widen From 4 To 6 Lanes	PS&E	2027	\$123.5 M	\$36.5 M	Partial	\$87.0 M
9	0380-17-007	SH 349	SH 349C to Midland County Line	Upgrade to Freeway. Add Main Lanes & Frontage Roads	P	2035	\$25.2 M	—	None	\$25.2 M
10	0380-18-010	SH 349	Martin County Line to FM 1788		P	2035	\$89.6 M	—	None	\$89.6 M
11	1718-07-046	SH 349	FM 1788 to SH 191		P	2035	\$19.6 M	—	None	\$19.6 M
Total							\$643.0 M	\$108.5 M		\$534.5 M
Grand Total							\$945.1 M	\$410.6 M		\$534.5 M

1 Project Stage Key: CST = Construction; P = Planning; PE = Preliminary Engineering (studies have begun including environmental, surveys, traffic, etc.); PS&E = Developing design (plans, specifications and estimates); R = ready for construction
 2 Construction costs only include construction for a traditional Design-Bid-Build. Low bid amount shown for projects under construction. For other projects, estimated construction cost is based on the Future UTP Minimum Funding amount in the TxDOT Connect database.
 3 Includes total authorized construction funding. For projects not under construction, includes funding from one or more UTP funding category through the 2023 UTP.



Meeting #4

Laredo District Update

Epi Gonzalez, P.E.
Laredo District Engineer



April 13, 2023

Laredo District



PROJECTS UNDER CONSTRUCTION										
#	CSJ	HWY	Limits	Description	Project Stage ¹	Let Year	Est Cst Cost ²	CAT Funding ³	Funding Status	Funding Gap
1	0299-01-074	US 277	0.63 MI West of SL 79 to 2.13 MI West of SL 79	Widen Highway to Add Super 2 Passing Lane	CST	2022	\$1.3 M	\$1.3 M	Full	—
2	0300-01-105	US 277	0.72 MI East of SL 480 to 2.72 MI East of SL 480	Widen Highway to Add Super 2 Passing Lane	CST	2022	\$2.4 M	\$2.4 M	Full	—
3	0300-02-042	US 277	0.1 MI West of Maverick/Dimmit County Line to Maverick/Dimmit County Line	Widen Highway to Extend Existing Super 2 Passing Lane	CST	2022	\$0.1 M	\$0.1 M	Full	—
4	0300-03-076	US 277	Dimmit/Maverick County Line to 1.90 MI East of Dimmit/Maverick County Line	Widen Highway to Add Super 2 Passing Lane	CST	2022	\$1.7 M	\$1.7 M	Full	—
5	0037-09-039	US 83	Dimmit Co. Line to 3.442 Miles S of SH 44	Rehabilitator Of Existing Highway	CST	2019	\$48.7 M	\$48.7 M	Full	—
6	0037-10-037	US 83	3.442 MI S of SH 44 to IH35/ US83 Intersection West Frtg Rd	Rehabilitate Existing Pavement Width Which Includes Grade Ditches, Structures, And Pavement Markings	CST	2019	\$66.8 M	\$66.8 M	Full	—
7	0018-05-099	IH 35	IH35/ US83 Intersection W Frtg Rd to 0.37 MI S of US83/ IH35 Int	Rehabilitate Existing Pavement Width Which Includes Grade Ditches, Structures, And Pavement Markings	CST	2019	\$1.8 M	\$1.8 M	Full	—
8	0018-06-188	IH 35	0.38 MI South of US59/IH35 INT to 0.80 MI North of US59/IH35 INT	Widen Interstate to 6 Lane	CST	2020	\$6.1 M	\$6.1 M	Full	—
9	0018-06-184	IH 35	0.207 MI West of US59-SL20 / IH35 INT to 0.197 MI South of IH35 / US59-SL20 INT	New direct connector (#8) east I-69W to south IH 35	CST	2020	\$21.9 M	\$21.9 M	Full	—
10	0018-06-183	IH 35	0.454 MI South of IH35 / US59-SL20 INT to 0.732 MI East of US59-SL20 / IH35 INT	New direct connector (#5) west I-69W to south IH 35	CST	2020	\$29.2 M	\$29.2 M	Full	—
11	0018-06-136	IH 35	Shiloh Drive to 0.38 MI South of US 59/ IH 35 Int	Widen of Interstate to 6-Lane and RR Grade Separation.	CST	2020	\$57.7 M	\$57.7 M	Full	—
Total							\$237.7 M	\$237.7 M		

1 Project Stage Key: CST = Construction; P = Planning; PE = Preliminary Engineering (studies have begun including environmental, surveys, traffic, etc.); PS&E = Developing design (plans, specifications and estimates); R = ready for construction
 2 Construction costs only include construction for a traditional Design-Bid-Build. Low bid amount shown for projects under construction. For other projects, estimated construction cost is based on the Future UTP Minimum Funding amount in the TxDOT Connect database.
 3 Includes total authorized construction funding. For projects not under construction, includes funding from one or more UTP funding category through the 2023 UTP.

Laredo District



PROJECTS IN 2023 UTP										
#	CSI	HWY	Limits	Description	Project Stage ¹	Let Year	Est Cst Cost ²	CAT Funding ³	Funding Status	Funding Gap
12	0037-30-041	US 83	Los Botines Ln to US83 / IH35 Underpass	Widen Existing Roadways to Add Lanes and Shoulders	PE	2027	\$3.4 M	\$3.4 M	Full	-
13	0018-05-089	IH 35	0.47 MI South of Uniroyal Interchange to 3.23 MI North of Uniroyal Interchange	IH-35 Overpass (Reconstructed/New) @ Uniroyal Dr & Hachar-Ruethinger	PS&E	2025	\$102.1 M	\$110.0 M	Full	-
14	0018-06-185	IH 35	0.50 MI East of IH35 to 0.50 MI North of US59	New Direct Connectors (#3 And #6) Northbound and Southbound IH 35 To US 59 EB	PS&E	2026	\$37.8 M	\$39.2 M	Full	-
Total							\$143.3 M	\$152.6 M		

1 Project Stage Key: CST = Construction; P = Planning; PE = Preliminary Engineering (studies have begun including environmental, surveys, traffic, etc.); PS&E = Developing design (plans, specifications and estimates); R = ready for construction
 2 Construction costs only include construction for a traditional Design-Bid-Build. Low bid amount shown for projects under construction. For other projects, estimated construction cost is based on the Future UTP Minimum Funding amount in the TxDOT Connect database.
 3 Includes total authorized construction funding. For projects not under construction, includes funding from one or more UTP funding category through the 2023 UTP.

Laredo District



FUTURE POTENTIAL PROJECTS UNFUNDED OR PARTIALLY FUNDED											
#	CSI	HWY	Limits	Description	Project Stage ¹	Let Year	Est. Cost ²	CAT Funding ³	Funding Status	Funding Gap	
15	0180-04	US 277	16.1 Miles North of US 377 to Val Verde/Edwards County Line	RECONSTRUCTION OF EXISTING ROADWAY TO FREEWAY STANDARDS	P	2034	\$206.8 M	—	None	\$206.8 M	
16	0180-05	US 277	US 377 to 16.3 Miles North of US 377		P	2034	\$266.4 M	—	None	\$266.4 M	
17	0160-06	US 277	9.3 Miles North of US 90 South Intersection to US 377		P	2034	\$210.1 M	—	None	\$210.1 M	
18	0180-07	US 277	Del Rio to 9.3 Miles North of US 90 South Intersection		F	2034	\$163.9 M	—	None	\$163.9 M	
19	0299-01	US 277	13.6 Miles North of the Maverick County Line to Del Rio		P	2034	\$191.9 M	—	None	\$191.9 M	
20	0299-02	US 277	Maverick/Val Verde County Line to 13.6 Miles North of the Maverick County Line		F	2034	\$225.0 M	—	None	\$225.0 M	
21	0299-03	US 277	0.6 Miles North of SH 133 to the Maverick/Val Verde County Line		F	2034	\$274.6 M	—	None	\$274.6 M	
22	0299-04-043	US 277	0.3 Mi S of FM 1065 (SOUTH) to 0.45 Mi N of FM 1526		P	2035	\$36.2 M	—	None	\$36.2 M	
23	0299-04	US 277	Eagle Pass to 0.6 Miles North of SH 133		F	2034	\$216.7 M	—	None	\$216.7 M	
24	0300-01	US 277	11.8 Miles West of the Dimmit County Line to Eagle Pass		P	2034	\$170.4 M	—	None	\$170.4 M	
25	0300-02	US 277	Dimmit/Maverick County Line to 11.8 Miles West of the Dimmit County Line	P	2034	\$195.2 M	—	None	\$195.2 M		
26	0300-03	US 277	Garriso Springs to Dimmit/Maverick County Line	P	2034	\$319.3 M	—	None	\$319.3 M		
27	0037-06-109	US 83	10 Miles North of County Line to Garriso Springs	F	2033	\$314.3 M	—	None	\$314.3 M		
28	0037-08-045	US 83	Webb/Dimmit County Line to 10 Miles North of the County Line	P	2033	\$176.4 M	—	None	\$176.4 M		
29	0027-09-035	US 83	16 Miles North of IH 35 in Webb/Dimmit County Lines	P	2034	\$273.0 M	—	None	\$273.0 M		
29	0027-10-044	US 83	US83/IH35 Underpass to 16 Miles North of IH 35 Underpass	P	2024	\$268.0 M	—	None	\$268.0 M		
30	0037-10-040	US 83	1.0 Mile North of SH 255 to US89/IH35 Underpass	PE	2026	\$50.4 M	—	None	\$50.4 M		
							Total	\$2,548.5 M		\$2,548.5 M	
							Grand Total	\$3,929.5 M	\$190.3 M		\$3,548.5 M

1 Project Stage Key: CST = Construction; P = Planning; PE = Preliminary Engineering (studies have begun including environmental, surveys, traffic, etc.); PS&E = Developing design (plans, specifications and estimates); R = ready for construction
 2 Construction costs only include construction for a traditional Design-Bid-Build. Low bid amount shown for projects under construction. For other projects, estimated construction cost is based on the Future UTP Minimum Funding amount in the TxDOT Connect database.
 3 Includes total authorized construction funding. For projects not under construction, includes funding from one or more UTP funding category through the 2023 UTP.