



LAREDO DISTRICT IH-27 ADVISORY COMMITTEE PROJECT DELIVERY & IMPLEMENTATION

Epigmenio “Epi” Gonzalez, P.E.
Laredo District Engineer

September 14, 2023

Agenda

| | | |
|----------|--|-------|
| 1 | Safety Minute | 3 |
| 2 | Laredo District Overview and Major Corridors | 4-5 |
| 3 | Projects Under Construction | 6-9 |
| 4 | Projects Under Development – Funded | 10-16 |
| 5 | Projects Under Development – Unfunded | 17-26 |
| 6 | Questions | 27 |

HELP
#EndTheStreakTX

End the streak of daily deaths on Texas roadways.

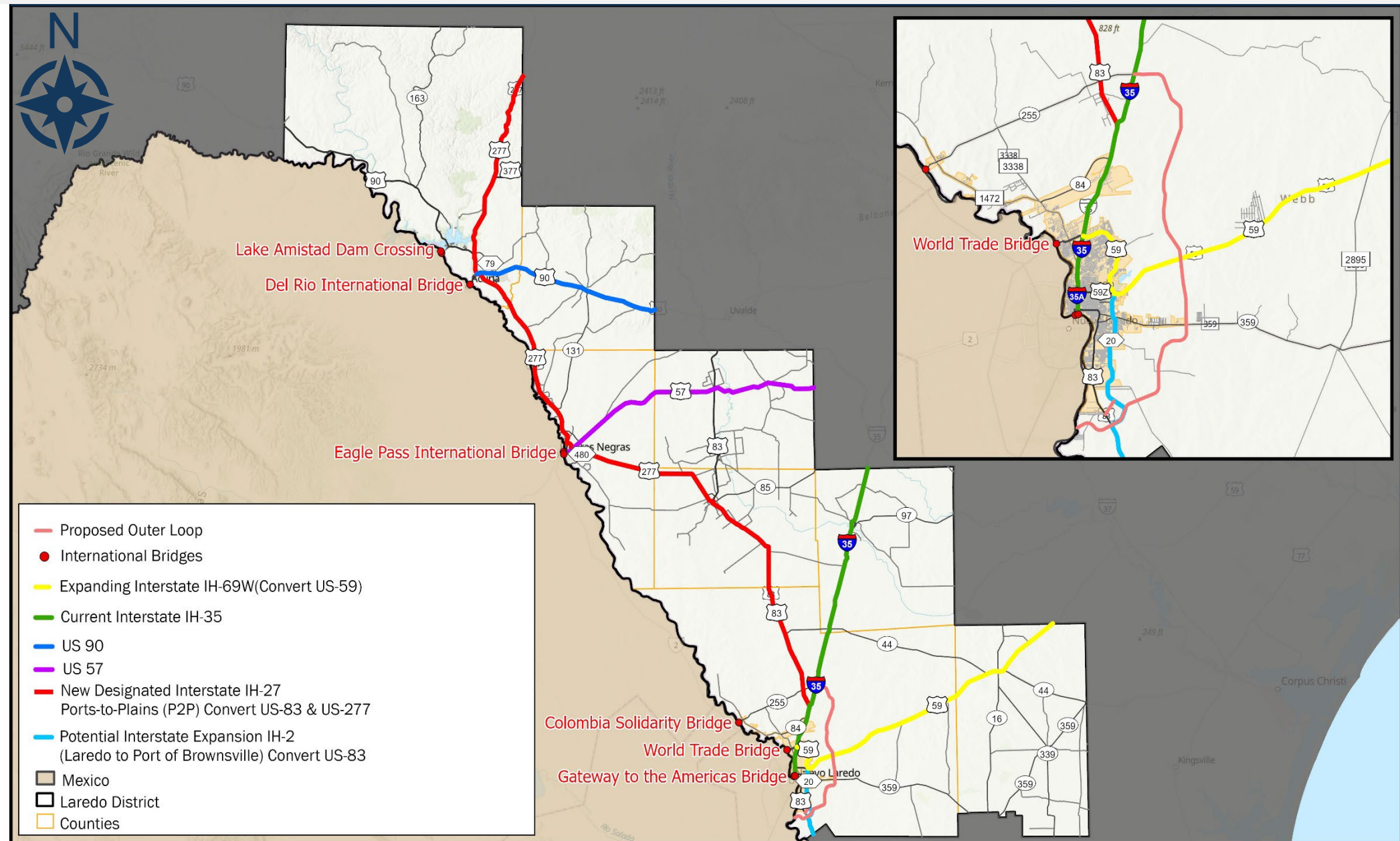
TxDOT.gov (Keyword: #EndTheStreakTX)



#EndTheStreakTX Toolkit







- Proposed Outer Loop
- International Bridges
- Expanding Interstate IH-69W (Convert US-59)
- Current Interstate IH-35
- US 90
- US 57
- New Designated Interstate IH-27 Ports-to-Plains (P2P) Convert US-83 & US-277
- Potential Interstate Expansion IH-2 (Laredo to Port of Brownsville) Convert US-83
- Mexico
- Laredo District
- Counties



Ports-to-Plains Corridor

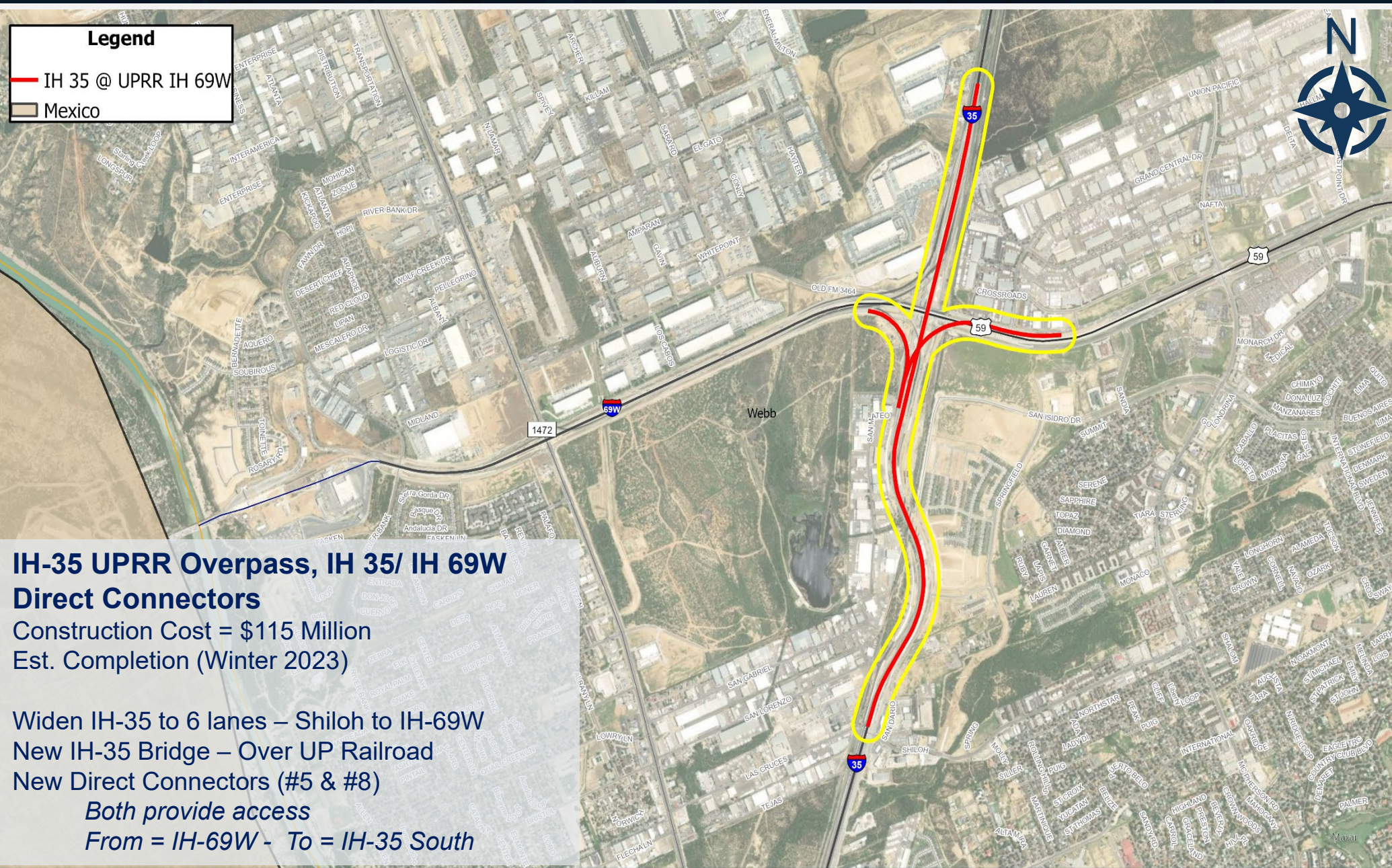
US 83/ US 277

(IH-27 Designation)

Projects Under Construction

Legend

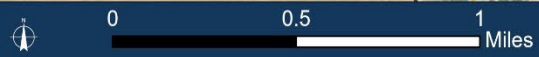
- IH 35 @ UPRR IH 69W
- Mexico

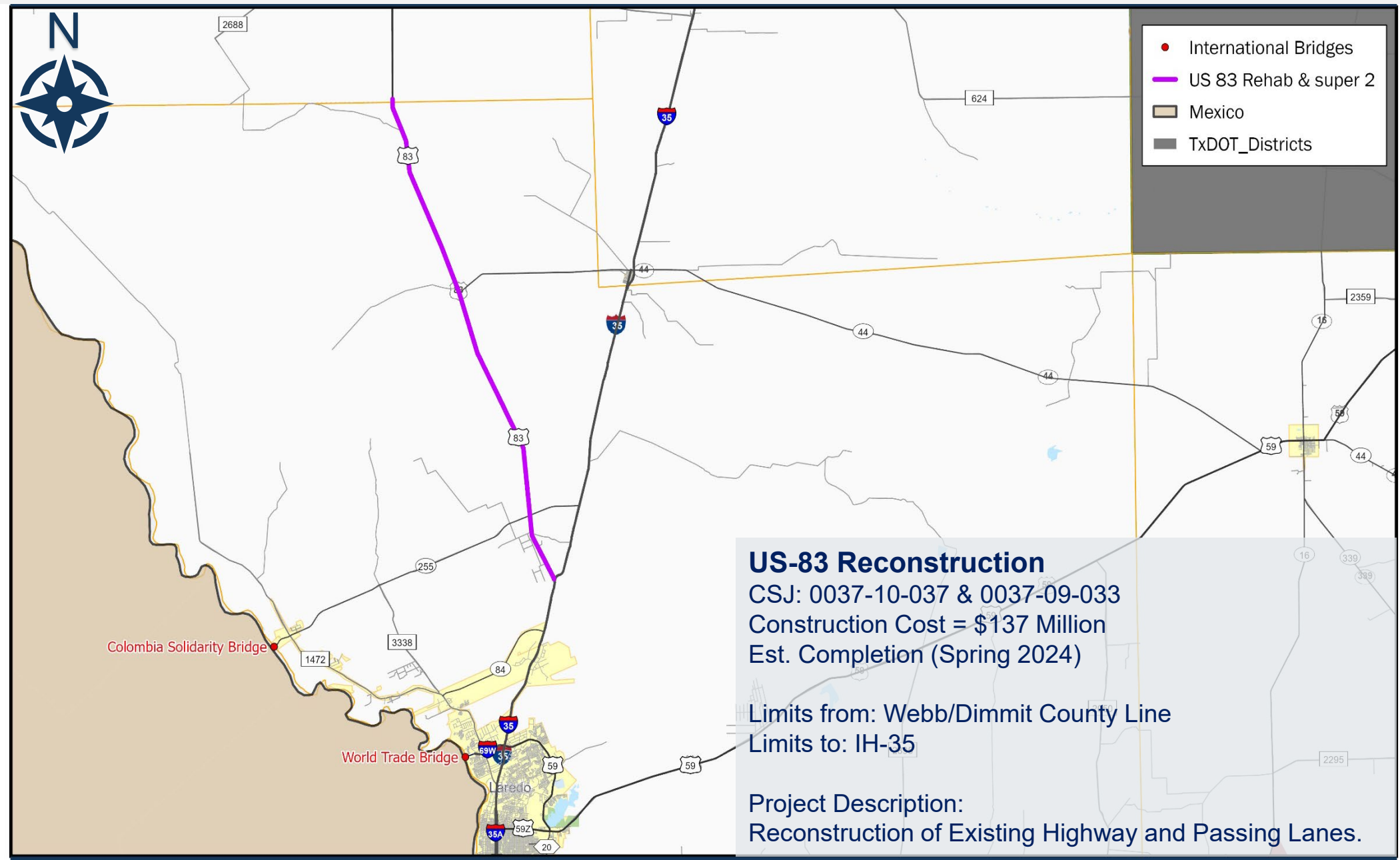


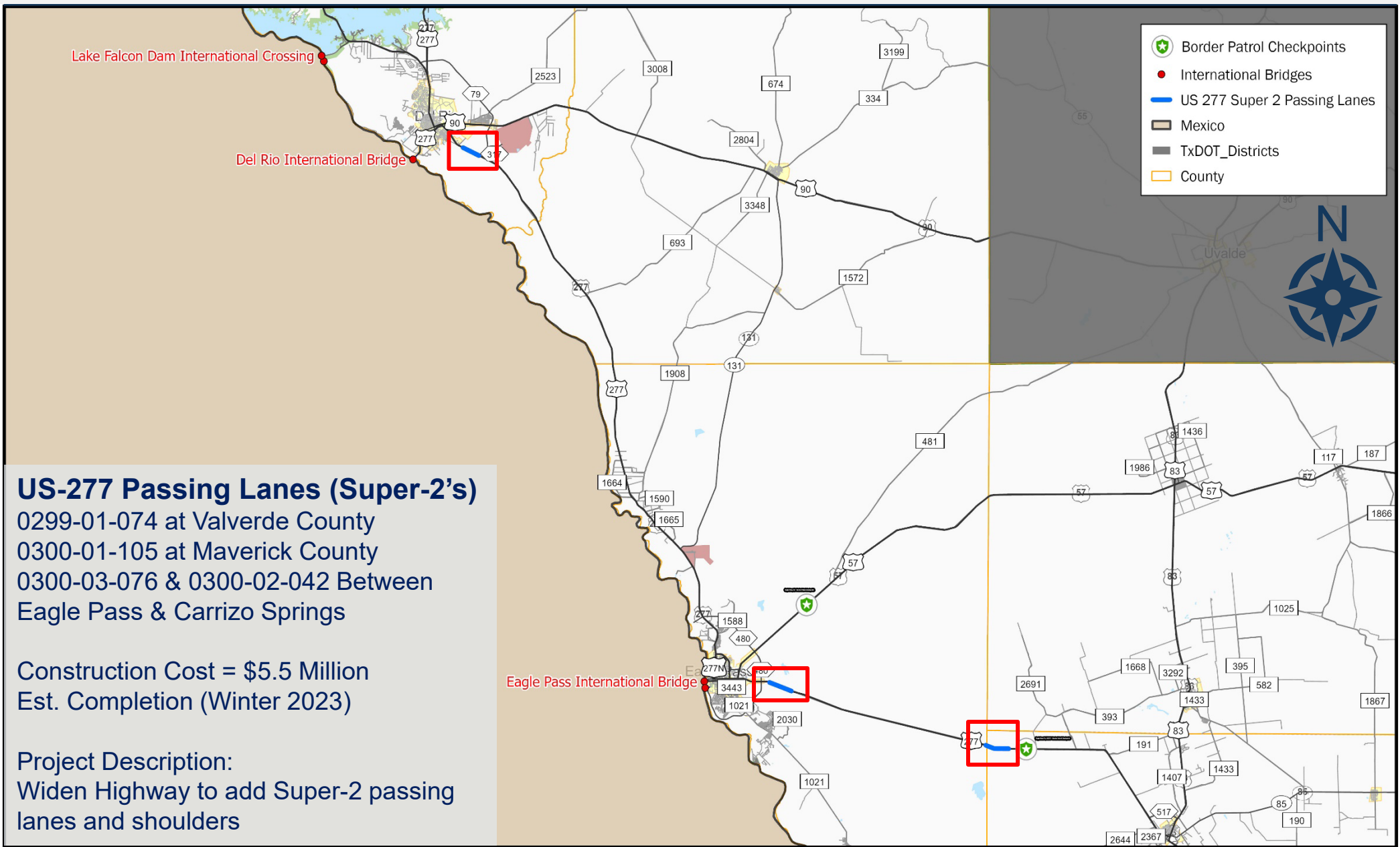
**IH-35 UPRR Overpass, IH 35/ IH 69W
Direct Connectors**

Construction Cost = \$115 Million
Est. Completion (Winter 2023)

Widen IH-35 to 6 lanes – Shiloh to IH-69W
New IH-35 Bridge – Over UP Railroad
New Direct Connectors (#5 & #8)
*Both provide access
From = IH-69W - To = IH-35 South*







US-277 Passing Lanes (Super-2's)

- 0299-01-074 at Valverde County
- 0300-01-105 at Maverick County
- 0300-03-076 & 0300-02-042 Between Eagle Pass & Carrizo Springs

Construction Cost = \$5.5 Million
 Est. Completion (Winter 2023)

Project Description:
 Widen Highway to add Super-2 passing lanes and shoulders

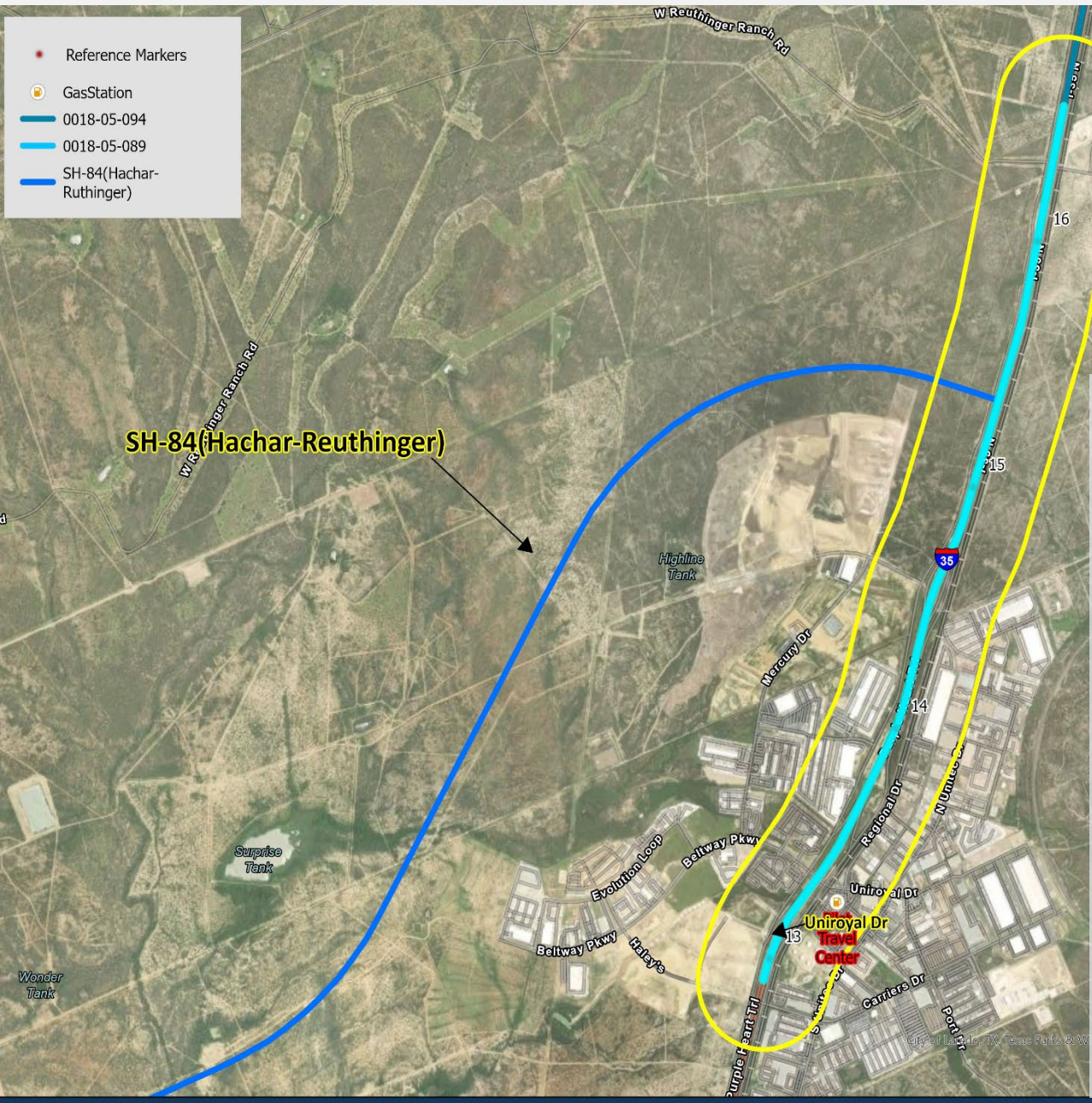




Ports-to-Plains Corridor
US 83/ US 277
(IH-27 Designation)

Funded Projects Under Development

- Reference Markers
- GasStation
- 0018-05-094
- 0018-05-089
- SH-84(Hachar-Ruthinger)



IH-35 at Uniroyal Interchange and SH-84

CSJ: 0018-05-089

Fully Funded

Est. Construction Cost: \$160 M

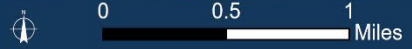
Allocated: \$160 M (Category 12,4)

Est. Letting Date: October 2024

Project Description:
 IH-35 Overpass Reconstructed at Uniroyal Dr and New Interchange at Hachar-Reuthinger Road.

Limits From: 0.47 MI South of Uniroyal Interchange (MM 12.9)

Limits To: 3.22 MI North of Uniroyal Interchange (MM 16.5)





IH-35 at IH-69W (DC No. 3 & DC No. 6)

CSJ: 0018-06-185

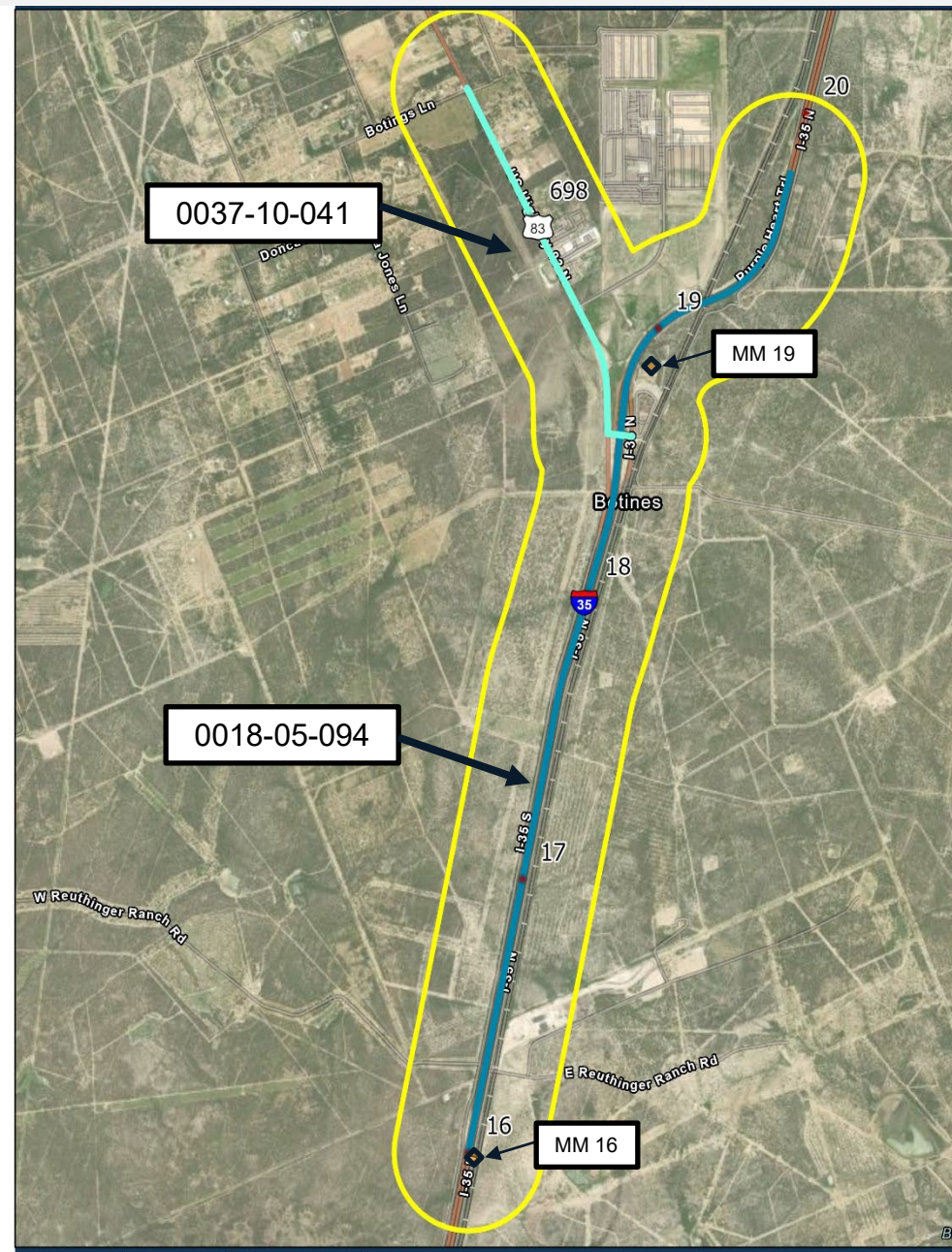
Est. Construction Cost: \$55 M

Allocated: \$55 M (Category 12)

Letting Date: November 2025

Fully Funded UTP 2024 (Category 12)

Project Description:
New Direct Connectors (#3 and #6) Northbound and
Southbound IH-35 to US-59 EB



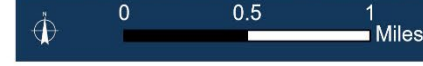
IH-35 at US-83 and UPRR Crossing
 CSJ: 0018-05-094 & CSJ: 0037-10-041

Est. Construction Cost: \$225 M
 Letting Date: September 2026

Fully Funded UTP 2024 (Categories 4 and 12)

Project Description:
 Widen IH 35 from 4-Lane to 6-Lane with Overpass at UPRR and Direct Connector to US 83 North

Limits From: 2.68 MI N of Uniroyal INT (MM 16.0)
 Limits To: 1.2 MI N of US-83 INT (MM 19.787)





US-83 Widening to 4 Lanes (Non-Freeway)

CSJ: 0037-10-040

Est. Letting Date: September 2027

Est. Construction Cost: \$51 M

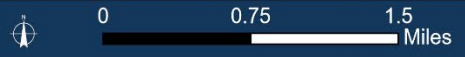
Fully Funded UTP 2024 (Category 12)

Project Description:

Widen Highway from 2 to 4 Lane Divided

Limits From: Los Botines Ln

Limits To: SH-255



Legend

- Designated SL 480
- Mexico
- Laredo district boundaries



SL-480 New 2-Lane Roadway

CCSJ: 0299-14-010, etc.

Est. Letting Date: September 2027

Est. Construction Cost: \$143 M

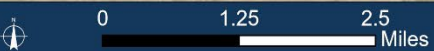
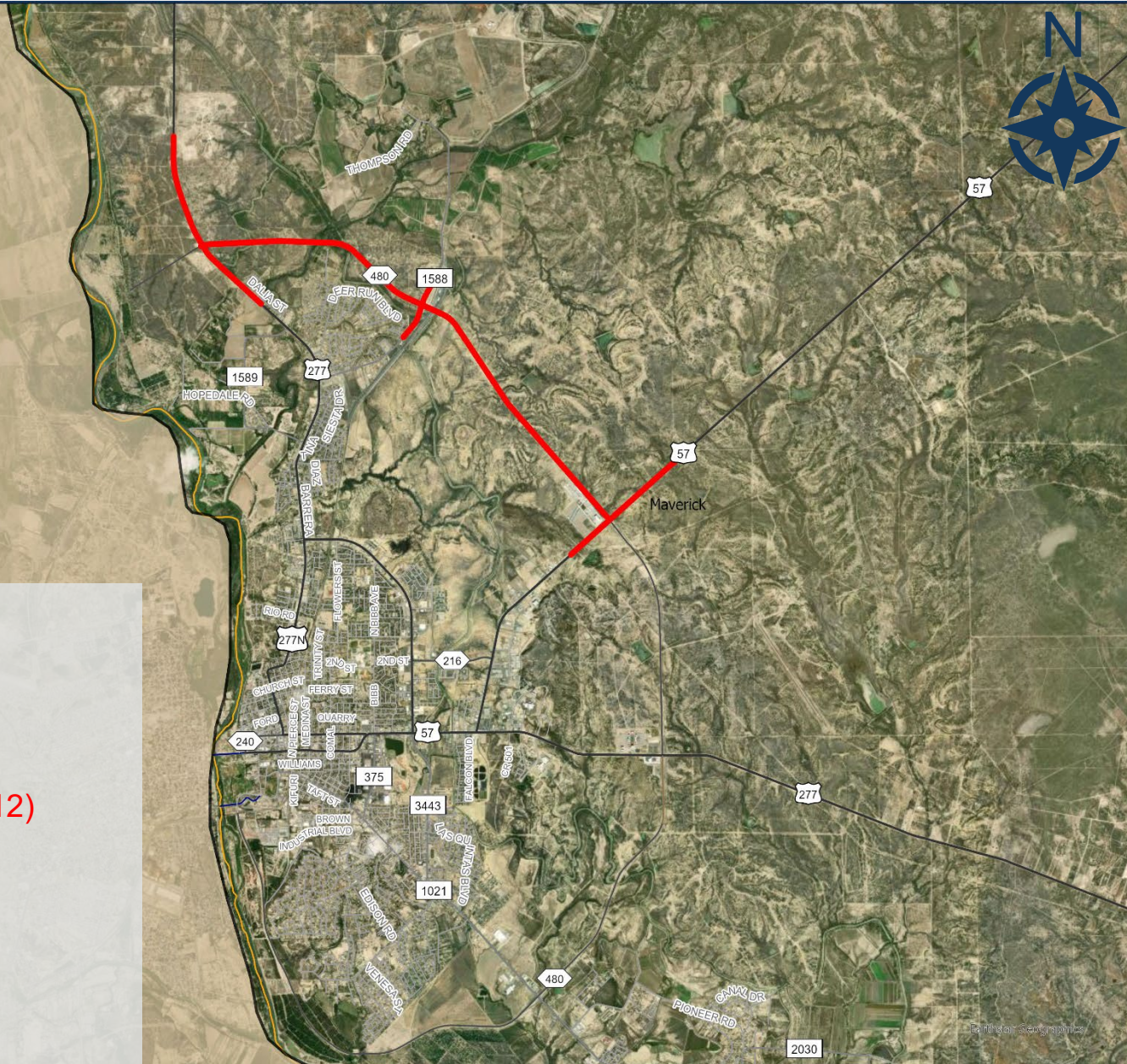
Fully Funded UTP 2024 (Categories 4 and 12)

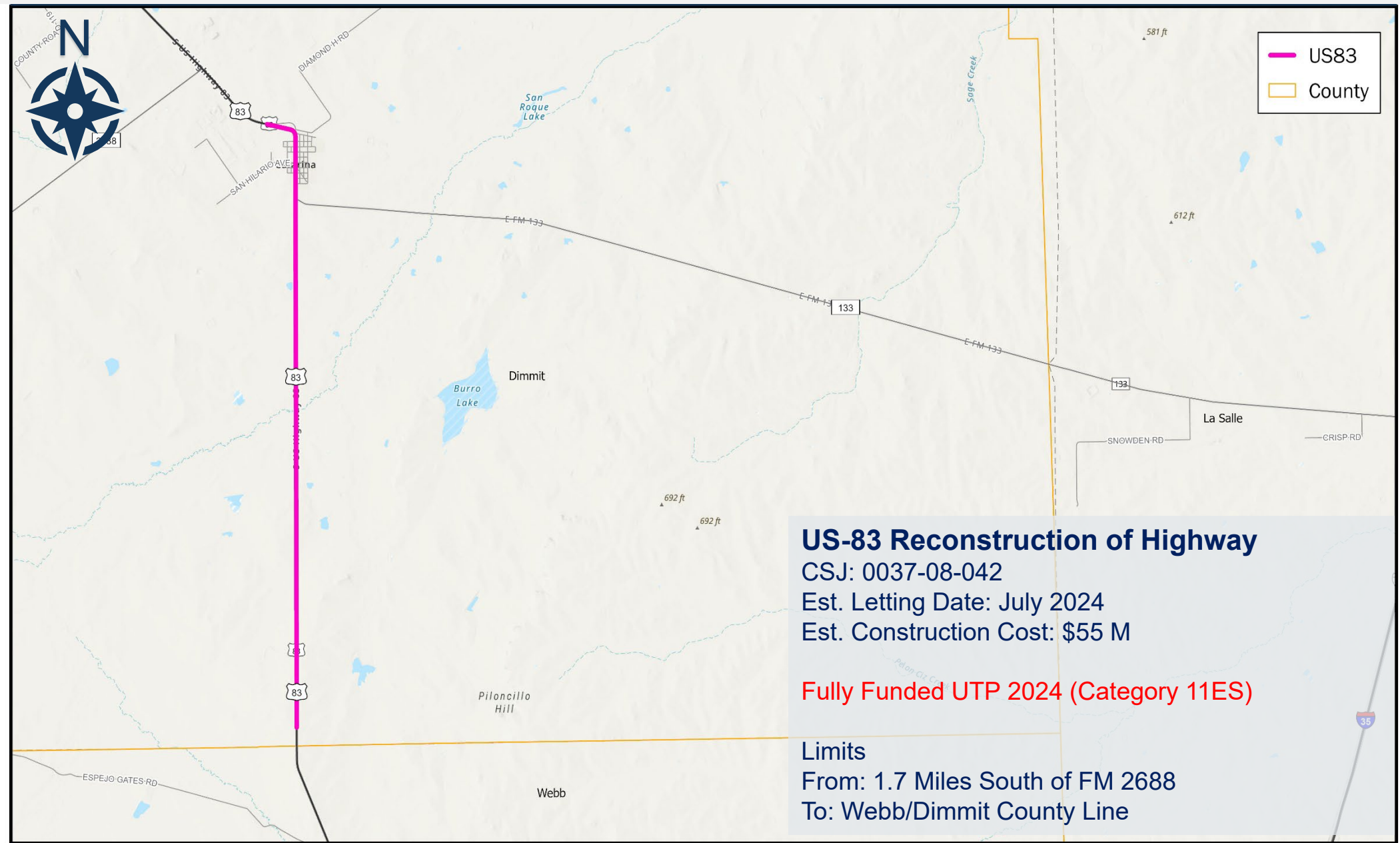
Project Description:

Two lane road with UPRR Overpass

Limits

From: US-57 To: US-277 North





US-83 Reconstruction of Highway
 CSJ: 0037-08-042
 Est. Letting Date: July 2024
 Est. Construction Cost: \$55 M

Fully Funded UTP 2024 (Category 11ES)

Limits
 From: 1.7 Miles South of FM 2688
 To: Webb/Dimmit County Line





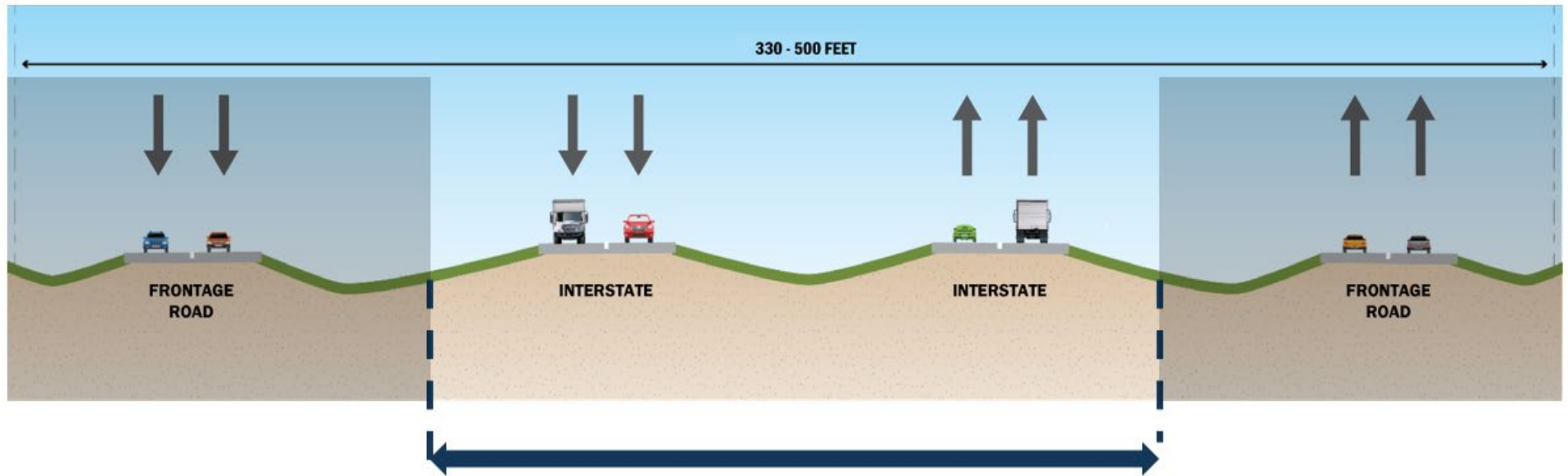
Ports-to-Plains Corridor

US 83/ US 277

(IH-27 Designation)

Unfunded Projects Under Development

Proposed Typical Section



ROW width for four-lane divided highway recommendation

Legend

- Mexico
- Laredo district boundaries
- Laredo
- County
- Designated IH-27

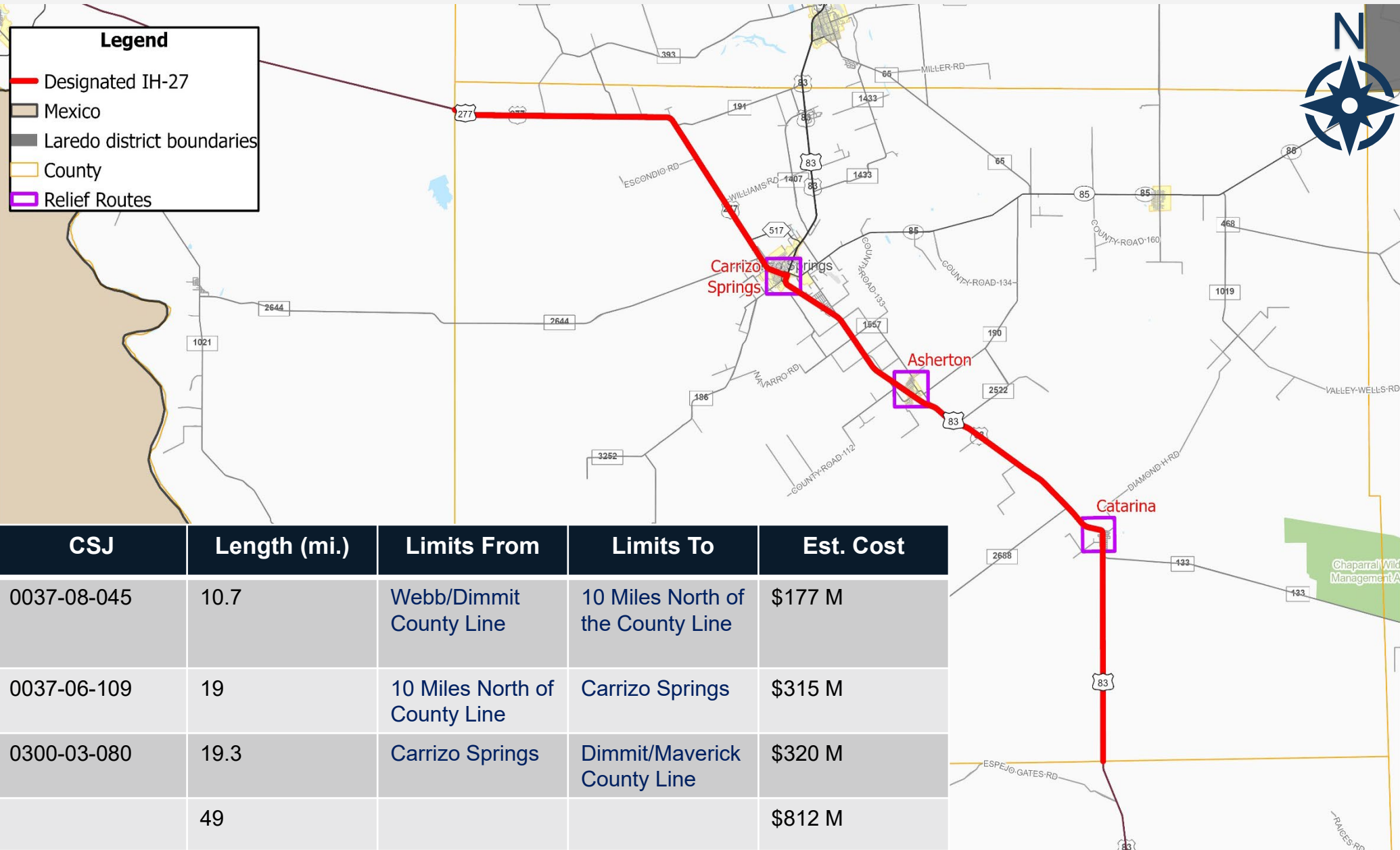


| CSJ | Length (mi.) | Limits From | Limits To | Est. Cost |
|-------------|--------------|-------------------------|-----------------------------------|-----------|
| 0037-10-044 | 11.5 | SH-255 | 16 Miles North of IH-35 Underpass | \$191 M |
| 0037-09-035 | 16.6 | 16 Miles North of IH-35 | Webb/Dimmit County Line | \$273 M |
| | 28.1 | | | \$465 M |

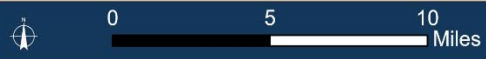


Legend

- Designated IH-27
- Mexico
- Laredo district boundaries
- County
- Relief Routes

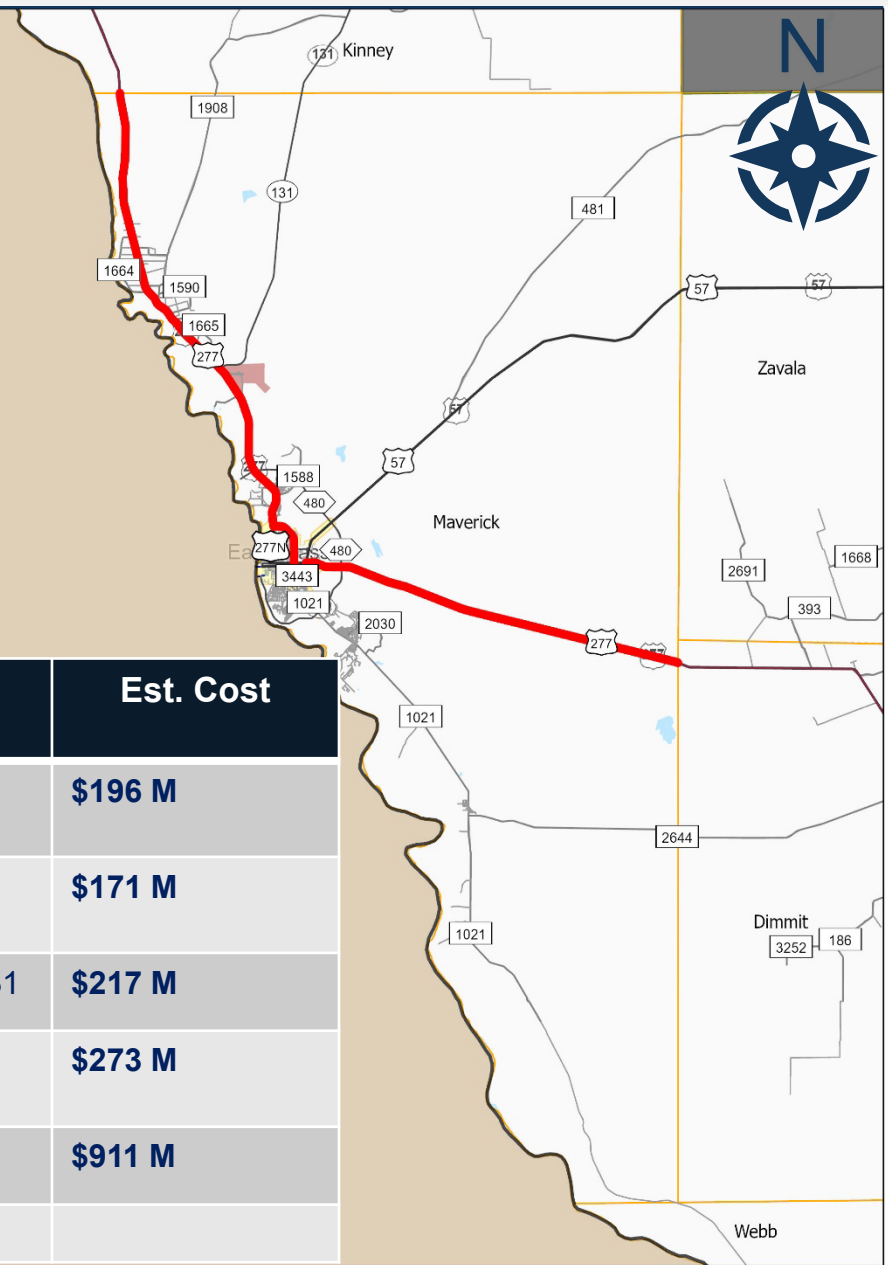


| CSJ | Length (mi.) | Limits From | Limits To | Est. Cost |
|-------------|--------------|-------------------------------|-----------------------------------|-----------|
| 0037-08-045 | 10.7 | Webb/Dimmit County Line | 10 Miles North of the County Line | \$177 M |
| 0037-06-109 | 19 | 10 Miles North of County Line | Carrizo Springs | \$315 M |
| 0300-03-080 | 19.3 | Carrizo Springs | Dimmit/Maverick County Line | \$320 M |
| | 49 | | | \$812 M |



Legend

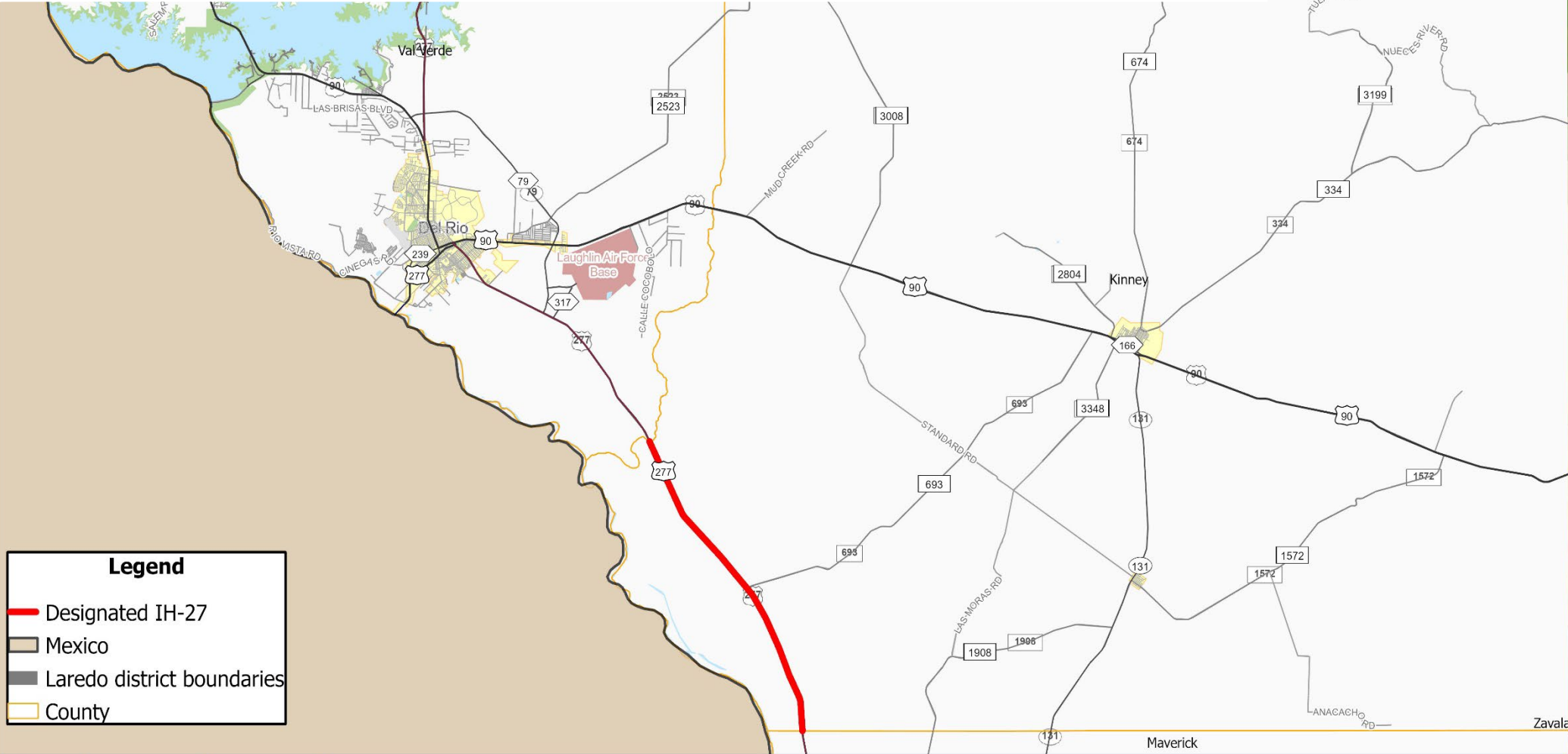
- Designated IH-27
- Mexico
- Laredo district boundaries
- County



| CSJ | Length (mi.) | Limits From | Limits To | Est. Cost |
|-------------|--------------|----------------------------------|----------------------------------|-----------|
| 0300-02-044 | 11.8 | Dimmit/Maverick CL | 11.8 Miles West of the Dimmit CL | \$196 M |
| 0300-01-110 | 10.3 | 11.8 Miles West of the Dimmit CL | Eagle Pass | \$171 M |
| 0299-04-084 | 13.1 | Eagle Pass | 0.6 Miles North of SH-131 | \$217 M |
| 0299-03-075 | 16.6 | | Maverick/Kinney County Line | \$273 M |
| | 51.8 | | | \$911 M |

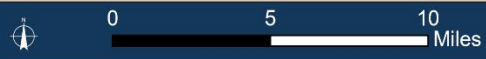


| CSJ | Length (mi.) | Limits From | Limits To | Est. Cost |
|-------------|--------------|-----------------------------|------------------------------|-----------|
| 0299-02-038 | 13.6 | Maverick/Kinney County Line | Val Verde/Kinney County Line | \$225 M |
| | 13.6 | | | \$225 M |



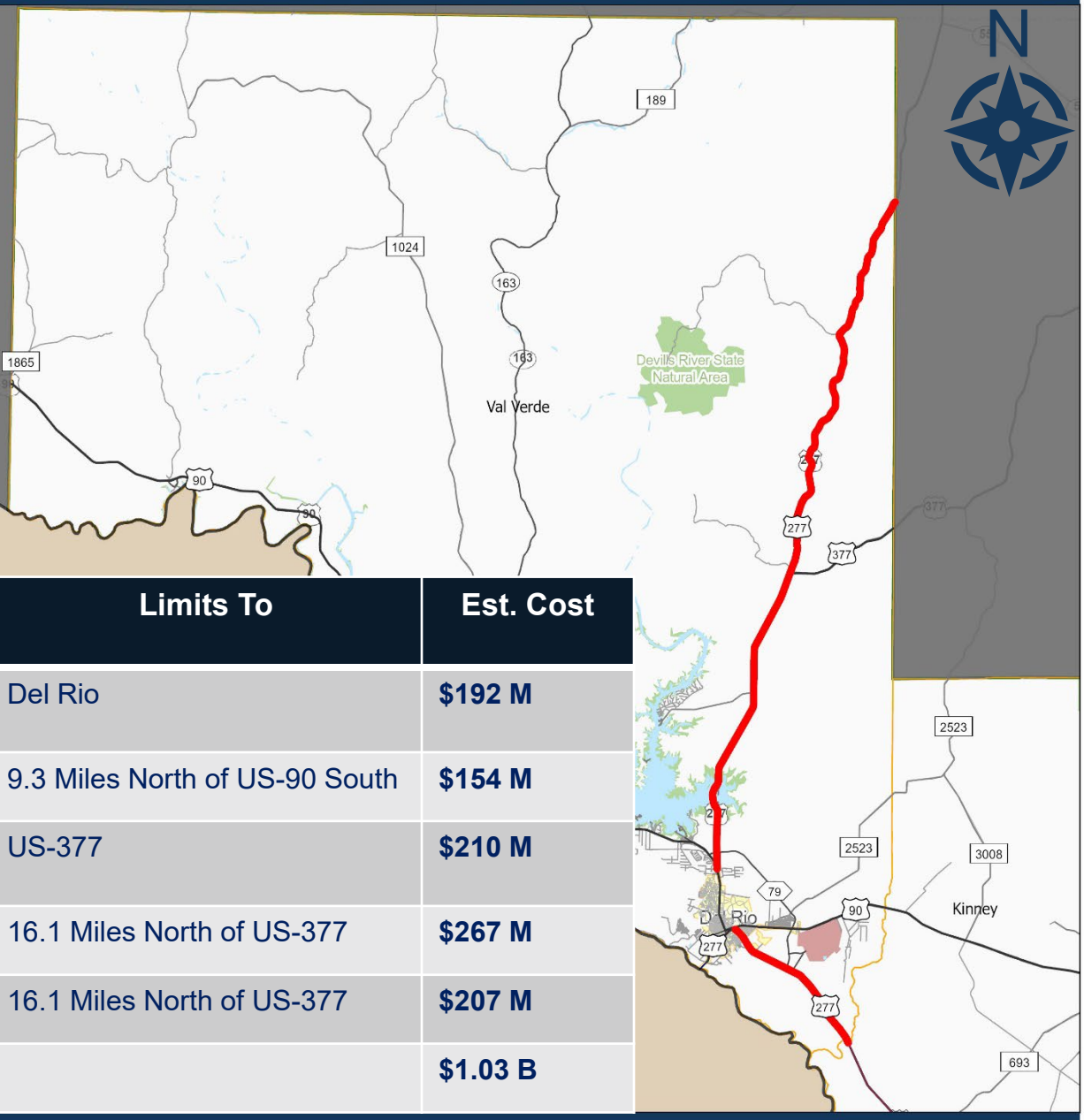
Legend

- Designated IH-27
- Mexico
- Laredo district boundaries
- County

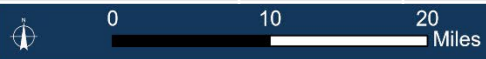


Legend

- Designated IH-27
- Mexico
- Laredo district boundaries
- County



| CSJ | Length (mi.) | Limits From | Limits To | Est. Cost |
|-------------|--------------|---|--------------------------------|-----------------|
| 0299-01-077 | 11.6 | Val Verde /Kinney County Line | Del Rio | \$192 M |
| 0160-07-035 | 9.3 | Del Rio | 9.3 Miles North of US-90 South | \$154 M |
| 0160-06-036 | 12.7 | 9.3 Miles North of US-90 South Intersection | US-377 | \$210 M |
| 0160-05-051 | 16.1 | US-377 | 16.1 Miles North of US-377 | \$267 M |
| 0160-04-052 | 12.5 | 16.1 Miles North of US-377 | 16.1 Miles North of US-377 | \$207 M |
| | 62.2 | | | \$1.03 B |



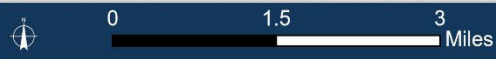
Legend

- Designated SL-79
- Mexico
- Laredo district boundaries

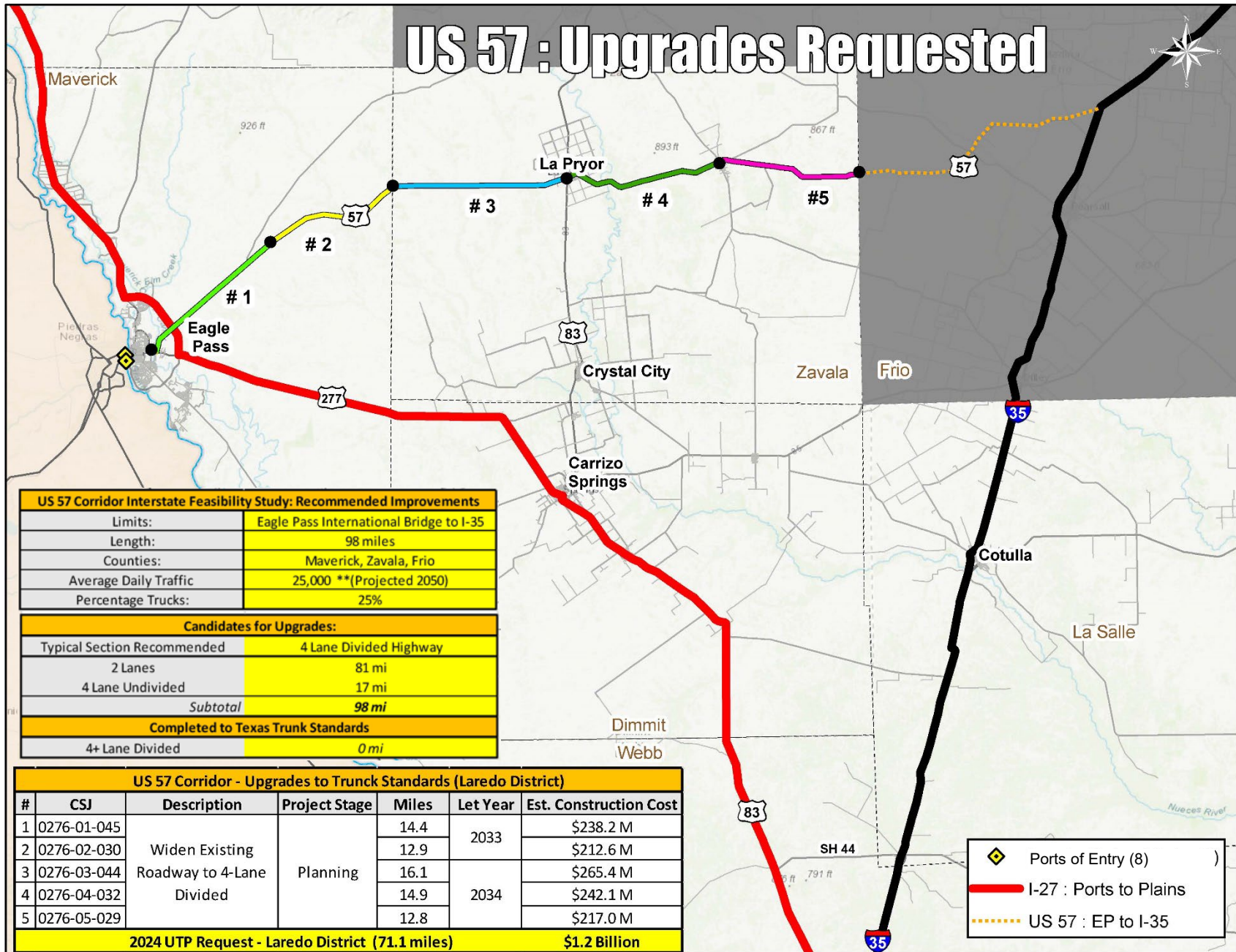


Val Verde County Projects – Del Rio

Length: TBD Miles - CSJ: 3621-01-019
Widen Existing Roadway to 4-Lane Divided
 From: US-277 South
 To: US-277 North
 Estimated Construction Cost: **TBD**



US 57 : Upgrades Requested



US 57 Corridor Interstate Feasibility Study: Recommended Improvements

| | |
|-----------------------|---|
| Limits: | Eagle Pass International Bridge to I-35 |
| Length: | 98 miles |
| Counties: | Maverick, Zavala, Frio |
| Average Daily Traffic | 25,000 *(Projected 2050) |
| Percentage Trucks: | 25% |

Candidates for Upgrades:

| | |
|-----------------------------|------------------------|
| Typical Section Recommended | 4 Lane Divided Highway |
| 2 Lanes | 81 mi |
| 4 Lane Undivided | 17 mi |
| Subtotal | 98 mi |

Completed to Texas Trunk Standards

| | |
|-----------------|------|
| 4+ Lane Divided | 0 mi |
|-----------------|------|

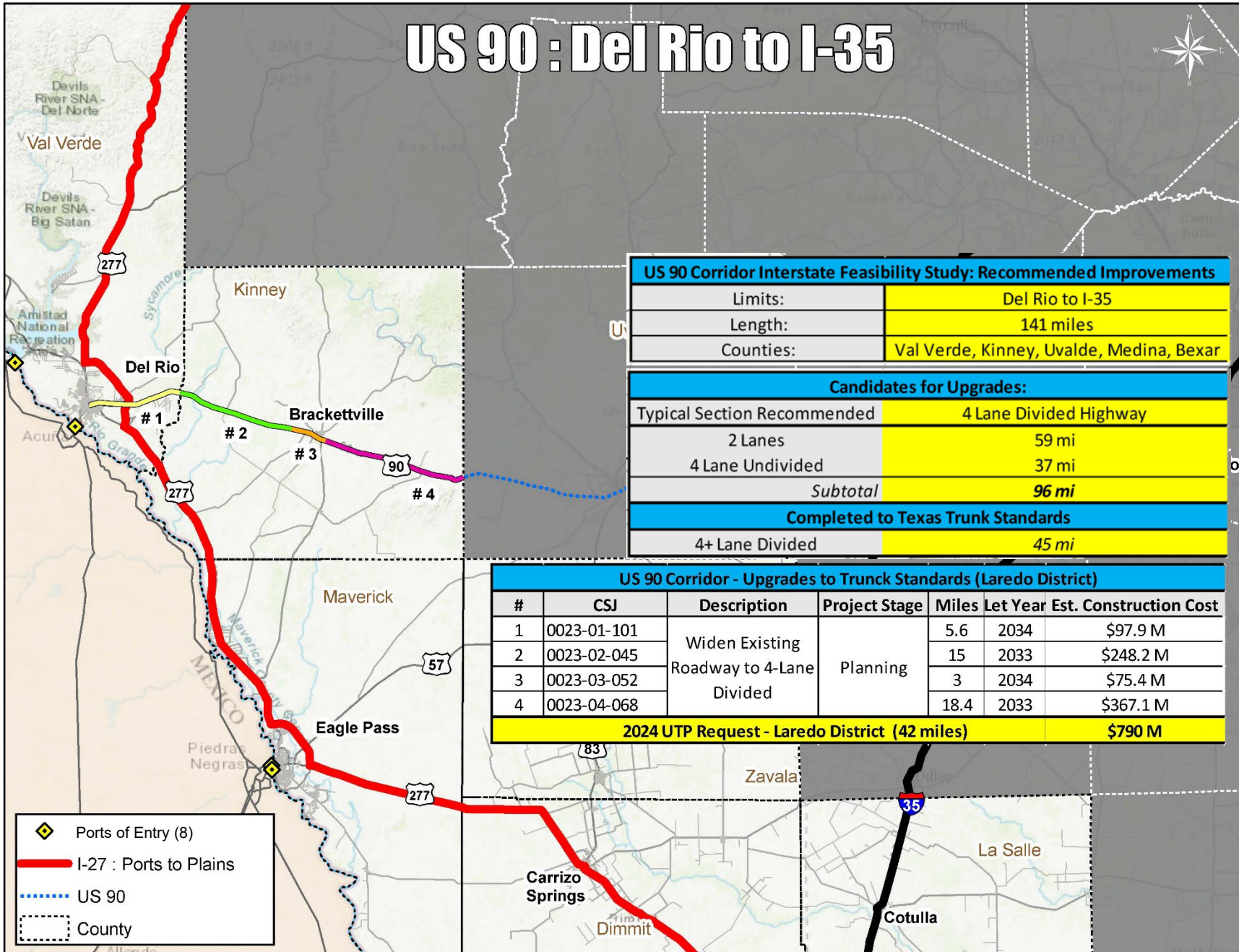
US 57 Corridor - Upgrades to Trunk Standards (Laredo District)

| # | CSJ | Description | Project Stage | Miles | Let Year | Est. Construction Cost |
|---|-------------|--|---------------|-------|----------|------------------------|
| 1 | 0276-01-045 | Widen Existing Roadway to 4-Lane Divided | Planning | 14.4 | 2033 | \$238.2 M |
| 2 | 0276-02-030 | | | 12.9 | | \$212.6 M |
| 3 | 0276-03-044 | | | 16.1 | 2034 | \$265.4 M |
| 4 | 0276-04-032 | | | 14.9 | | \$242.1 M |
| 5 | 0276-05-029 | | | 12.8 | | \$217.0 M |

2024 UTP Request - Laredo District (71.1 miles) \$1.2 Billion

- Ports of Entry (8)
- I-27 : Ports to Plains
- US 57 : EP to I-35

US 90 : Del Rio to I-35



US 90 Corridor Interstate Feasibility Study: Recommended Improvements

| | |
|-----------|--|
| Limits: | Del Rio to I-35 |
| Length: | 141 miles |
| Counties: | Val Verde, Kinney, Uvalde, Medina, Bexar |

Candidates for Upgrades:

| | |
|-----------------------------|------------------------|
| Typical Section Recommended | 4 Lane Divided Highway |
| 2 Lanes | 59 mi |
| 4 Lane Undivided | 37 mi |
| Subtotal | 96 mi |

Completed to Texas Trunk Standards

| | |
|-----------------|-------|
| 4+ Lane Divided | 45 mi |
|-----------------|-------|

US 90 Corridor - Upgrades to Trunk Standards (Laredo District)

| # | CSJ | Description | Project Stage | Miles | Let Year | Est. Construction Cost |
|---|-------------|--|---------------|-------|----------|------------------------|
| 1 | 0023-01-101 | Widen Existing Roadway to 4-Lane Divided | Planning | 5.6 | 2034 | \$97.9 M |
| 2 | 0023-02-045 | | | 15 | 2033 | \$248.2 M |
| 3 | 0023-03-052 | | | 3 | 2034 | \$75.4 M |
| 4 | 0023-04-068 | | | 18.4 | 2033 | \$367.1 M |

| | | | | | |
|--|--|--|--|--|----------------|
| 2024 UTP Request - Laredo District (42 miles) | | | | | \$790 M |
|--|--|--|--|--|----------------|

- Ports of Entry (8)
- I-27 : Ports to Plains
- US 90
- County

Questions?

Epigmenio “Epi” Gonzalez, P.E.

TxDOT – Laredo District Engineer

1817 Bob Bullock Loop, Laredo TX 78043

E-mail: Epigmenio.Gonzalez@txdot.gov