



# Gulf Coast Strategic Highway Coalition

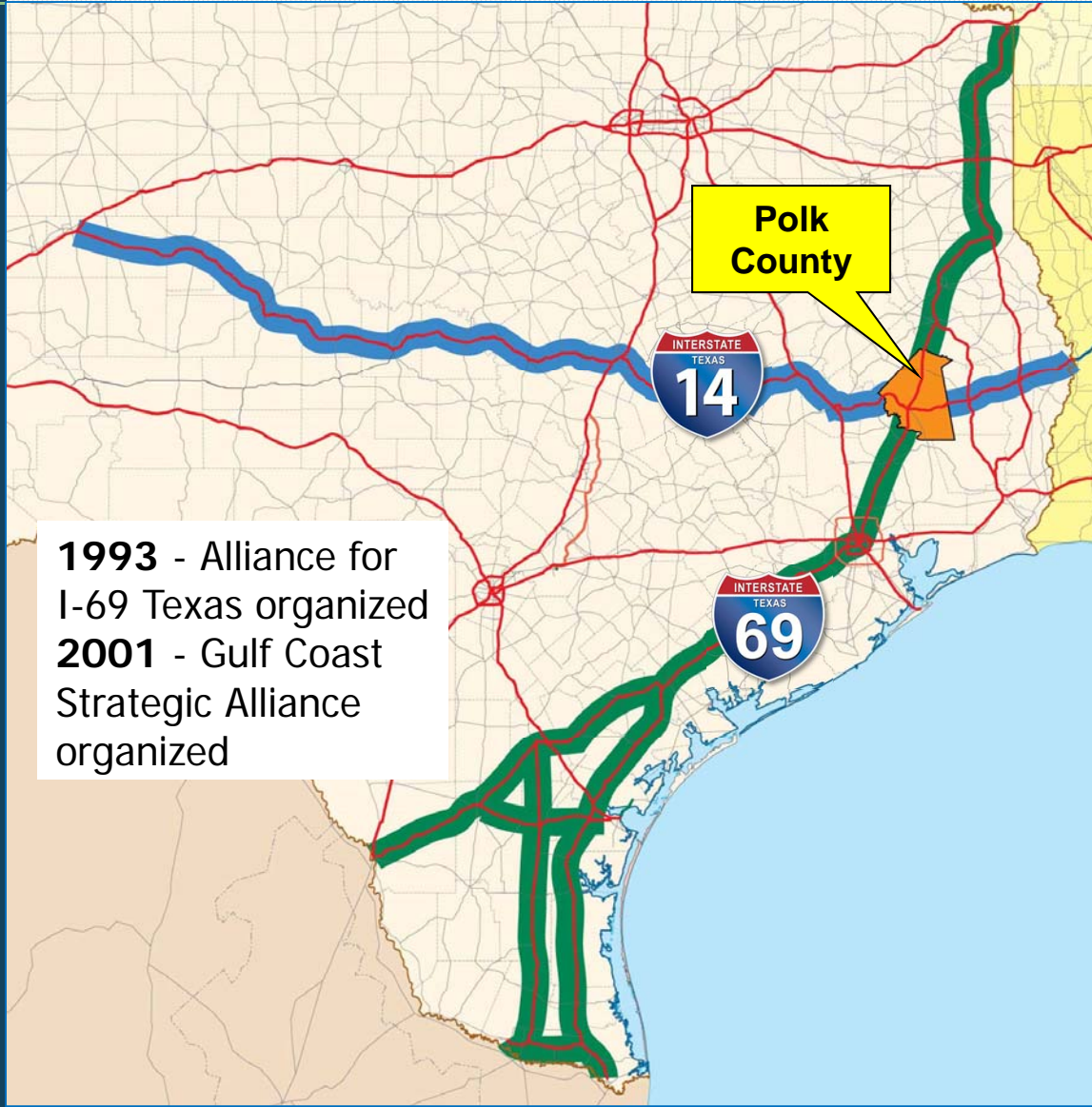
*Connecting U.S. Army Facilities and Texas Strategic Ports*



**Ports-To-Plains Conference**  
*September 15, 2016*

*US 190 – BELL COUNTY, Texas*

# Polk County at the Crossroads



**1993** - Alliance for I-69 Texas organized  
**2001** - Gulf Coast Strategic Alliance organized



# 23-Years of I-69 Advocacy



- The Alliance for I-69 Texas was formed in 1993 by elected officials and economic development organizations
- All segments of route are represented in Alliance
- Have an executive director plus Washington and State Capitol representation
- Persistence has helped build support from lawmakers, governor, Transportation Commission and local communities

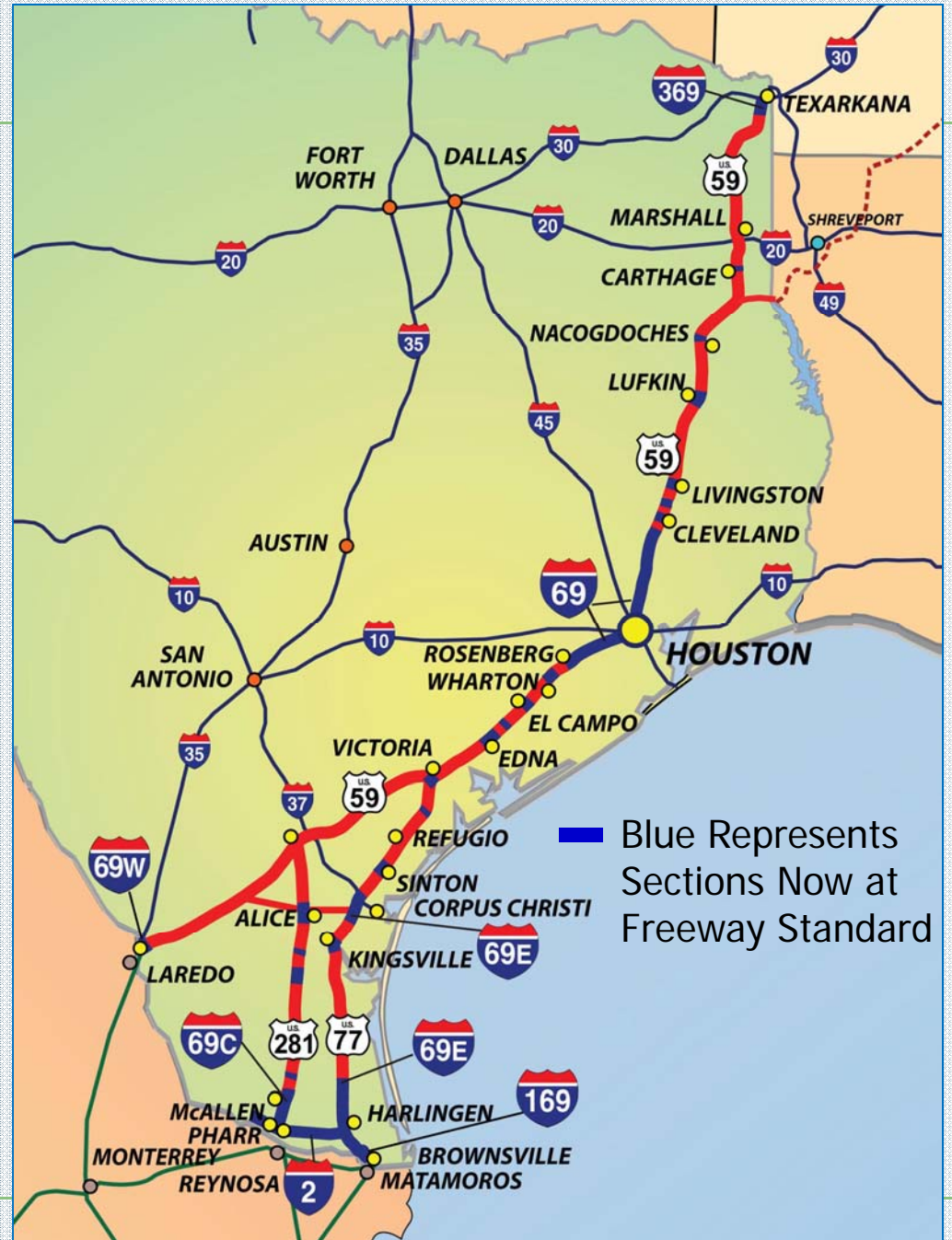
# The I-69 System in Texas



- 1,070 system miles including I-69E, I-69C, I-69W, I-369, SH 44, I-169 and I-2
- One-third of Texas population lives in the 35 counties on the I-69 Routes
- Already a very important freight corridor and connecting route
- Includes some long rural sections through low population areas
- Connects population centers, seaports, distribution points, and border ports of entry
  - Houston Metro – 6.4 million
  - RG Valley & Laredo – 2.1 million
  - Mexico Rio Grande – 1.7 million
  - Corpus Christi Metro – 427,000
  - Texarkana Metro – 144,000
  - Victoria Metro – 122,000

# Signed Sections

- Signed Miles
  - Rio Grande Valley – 120 (including I-169 and I-2 connector)
  - Corpus Christi – 7.8
  - Houston Area – 75
  - Texarkana – 3.5
  - Laredo – 1.4
  - TOTAL – 207 MILES
- 279 miles are in planning studies and environmental
- 128 miles are in final design and right-of-way acquisition
- 110 miles are constructed or under construction including projects in Fort Bend, Victoria, Nueces, Kleberg and Angelina Counties



# 2011: First I-69 Section Signed



# 2013: Sugar Land Signing Ceremony



HOUSTON/SUGAR LAND

# 2013: I-69E/I-2 Ceremony in Harlingen





# 2013: I-69C/I-2 Ceremony in Pharr



# *Texarkana Sign Unveiling – Sept. 2013*



# *Laredo Sign Unveiling – Aug. 2014*



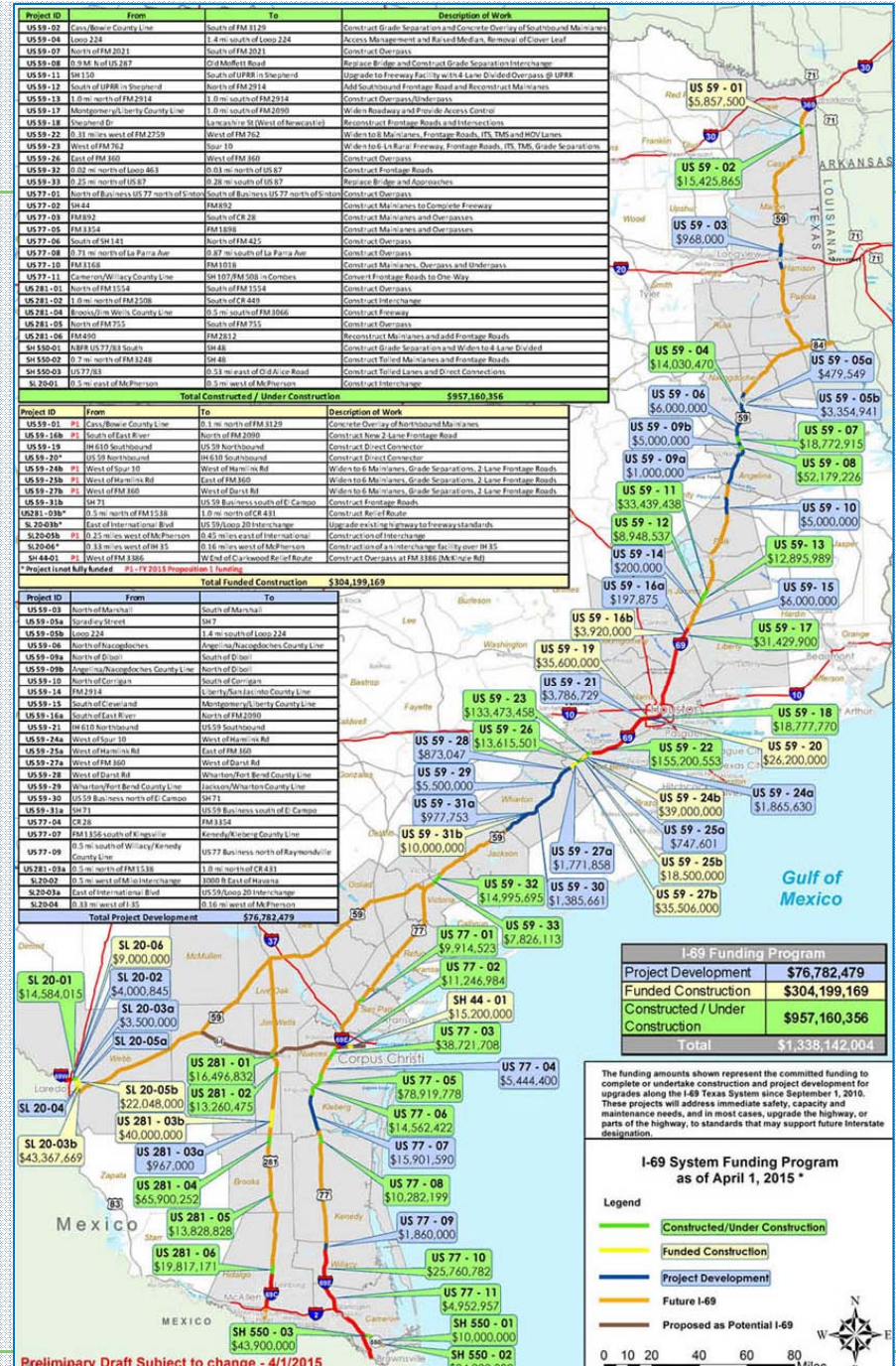
# *Houston Inside Loop – Aug. 2015*



# I-69 Funding Program

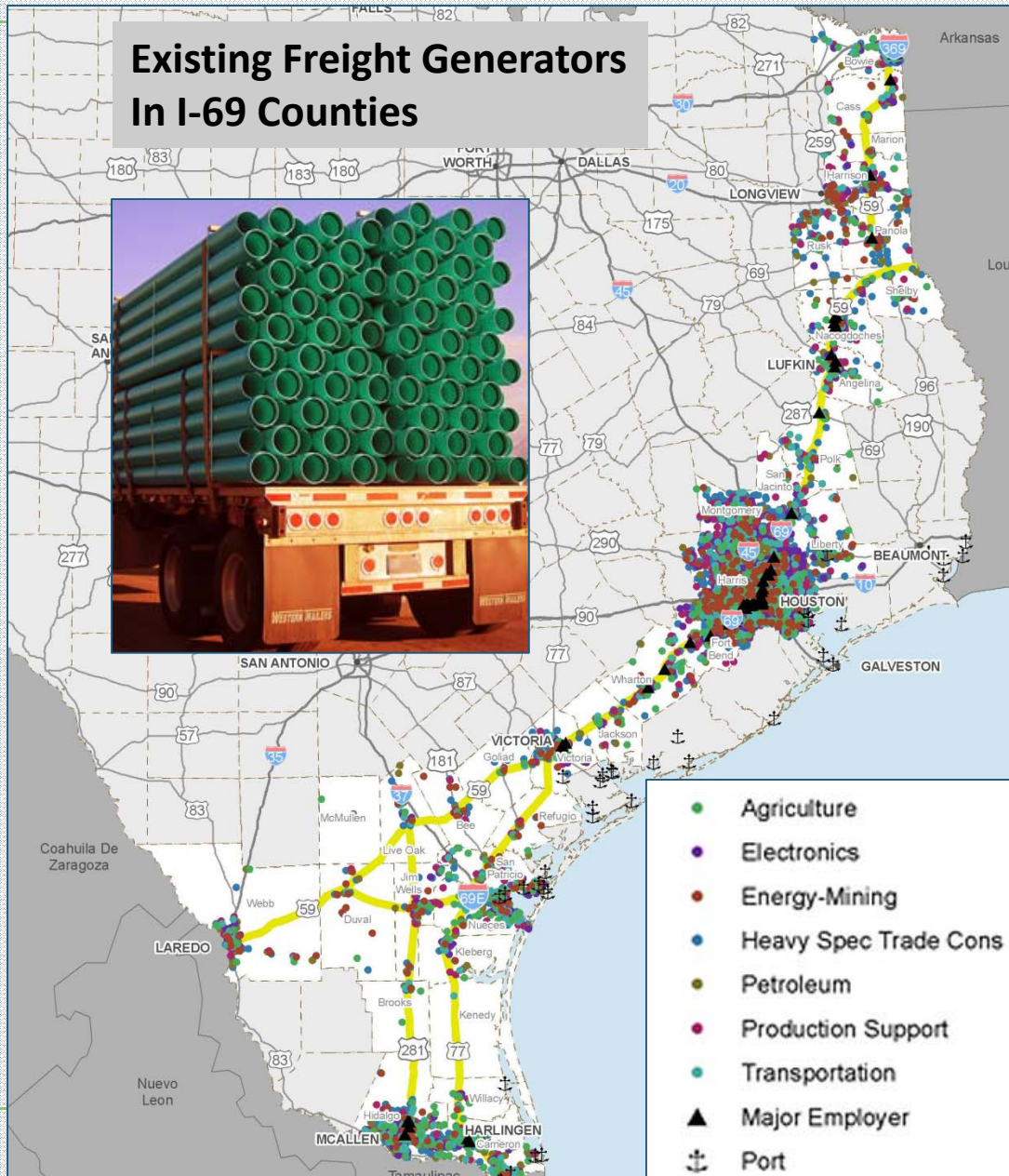
- I-69 in Texas is being developed as a series of upgrades to existing highways – US 59, US 77, US 281, US 84, SH 44
- Since 2010 TxDOT has committed more than **\$1.5 billion** to funding I-69 planning and projects
- 17 projects totaling \$232 million funded from Prop 1
- Funding in place for a \$287 million I-69/610 interchange rebuild in Houston
- Increased transportation funding is needed to ultimately connect dozens of individual I-69 projects

Alliance for I-69 Texas



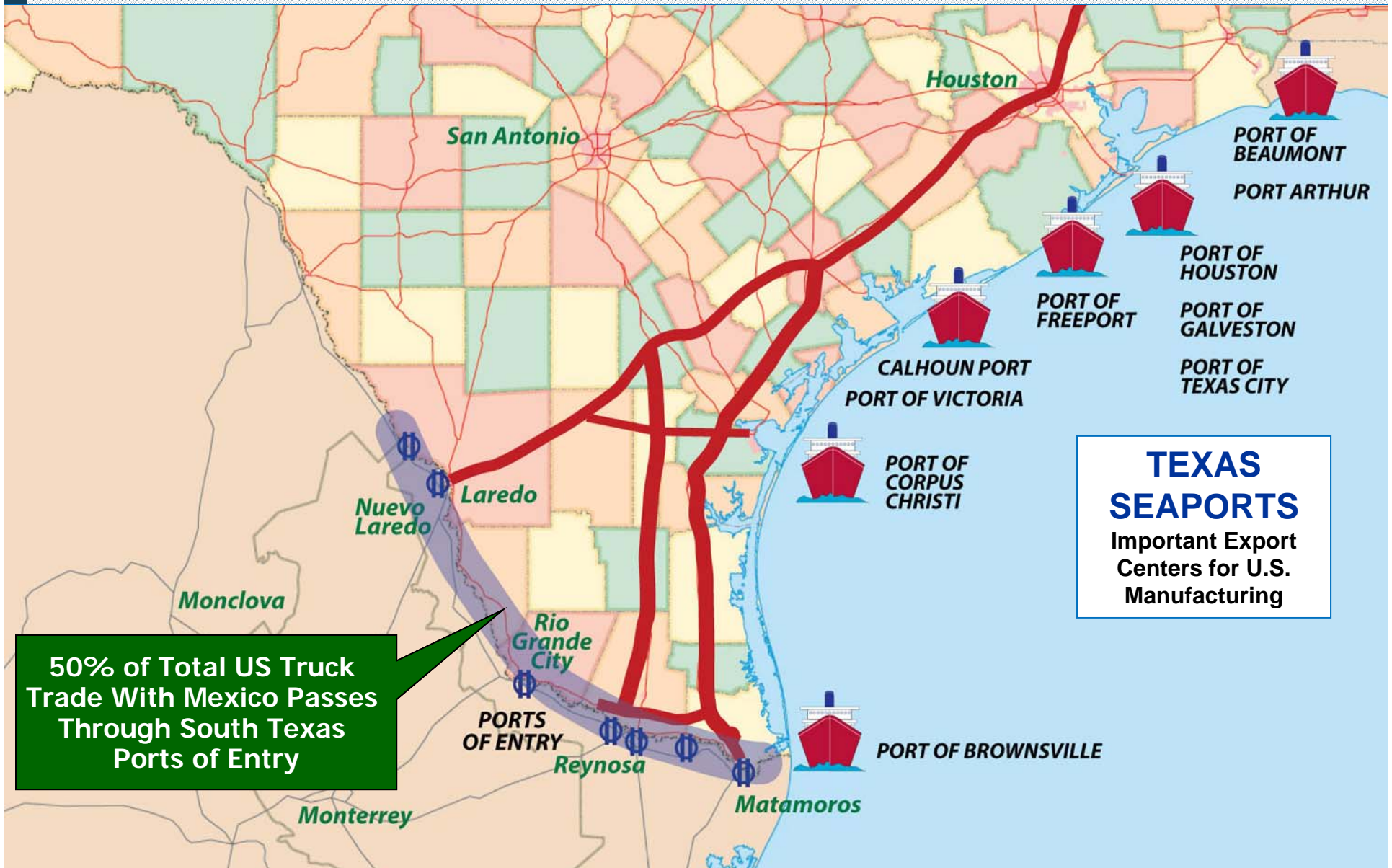
# I-69 In Texas is an Essential Freight Corridor

## Existing Freight Generators In I-69 Counties



The national I-69 route passes through 8 states where more than 800 miles of interstate is now open to traffic.

# Texas Ports – Land and Sea

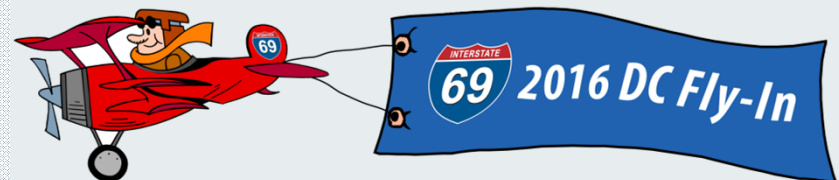


50% of Total US Truck Trade With Mexico Passes Through South Texas Ports of Entry

**TEXAS SEAPORTS**  
Important Export Centers for U.S. Manufacturing

## *2016 Successful I-69 DC Fly-In*

- Leaders from 8 states along national I-69 corridor
- Texas Transportation Commissioner Austin and state DOT official from most other I-69 states
- Meetings with congressional leaders including Chairman Shuster
- Meetings with members of the I-69 Texas congressional delegation, Texas senators & Texas members on the House Transportation & Infrastructure Committee

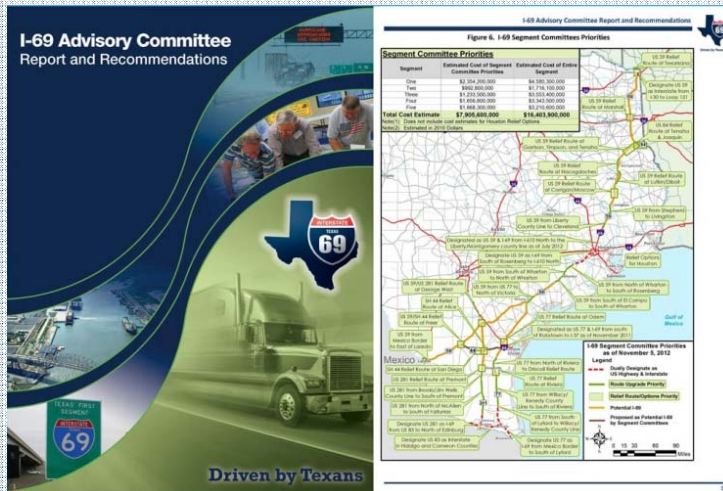


**May 17-19, 2016**



# Advancing I-69 in Texas

- Alliance for I-69 Texas helped initiate Advisory Committee and Segment Committee process
- The Committee has been reconstituted and the Alliance is well represented
- Renewed community based outreach efforts are underway to update recommended routes, timing and funding priorities





# Gulf Coast Strategic Highway Coalition

*Connecting U.S. Army Facilities and Texas Strategic Ports*



*US 190 - KILLEEN*



# *Two of the Nation's Largest Forts*

## FORT HOOD

- The largest single site employer in Texas
- \$28 Billion annual economic impact for Texas
- 40,000 soldiers and 70,000 family members
- 6,000 DOD civilian personnel and 10,000 contract employees
- Home of III Corps, First Army Division West, 1<sup>st</sup> Cavalry Division and 16 other units including two airfields



## FORT BLISS

- 33,000 military personnel and 40,000 family members
- Civilian workforce of more than 12,400
- More than 1.1 million acres with restricted air space, the only base where it is possible to live fire any weapon in the DOD inventory
- Home of 1<sup>st</sup> Armored Division, 32<sup>nd</sup> Army Air & Missile Defense Command, 11<sup>th</sup> Air Defense Artillery Brigade, the 402<sup>nd</sup> Field Artillery Brigade, other units and Briggs Army Airfield



# Two Vital Army Depots

## Corpus Christi

- CC Army Depot is the world's largest repair facility for rotary wing aircraft and components
- 4,200 civilian personnel and 1,300 contractor employees
- Supports Black Hawk, Apache, Chinook, Kiowa, UAS Shadow, and Air Force Pave Hawk

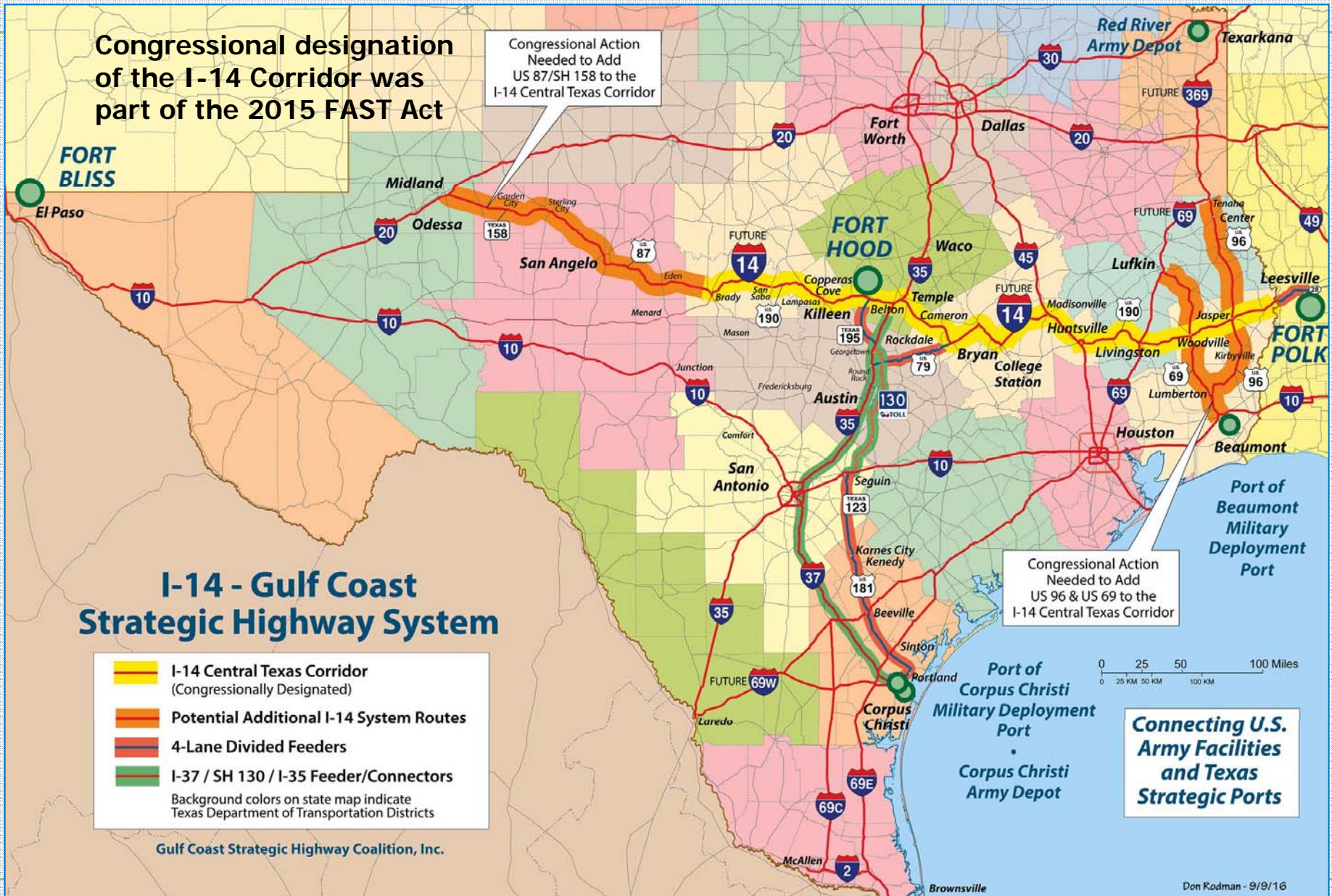


## Red River/TexAmericas

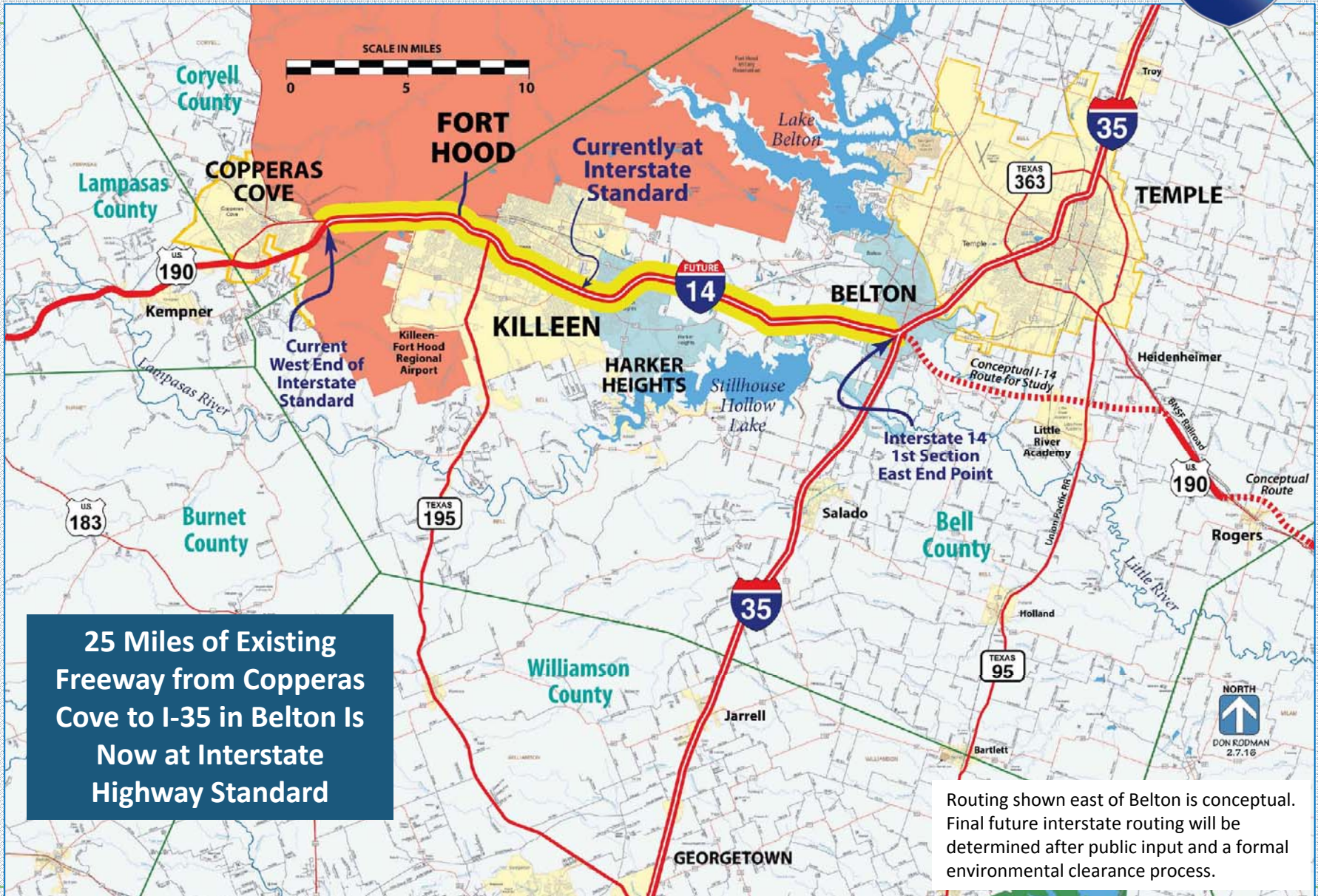
- Red River Army Depot provides vehicle maintenance support for the Army's tactical wheeled vehicles – MRAPs and HUMVEEs
- Civilian workforce of more than 5,000
- 2,500 Guard and Reserve personnel
- TexAmericas Center is a civilian redevelopment of buildings and acreage on closed portions of the depot and the former Lone Star Army Ammunition Plant, creating a new multi-modal transportation center



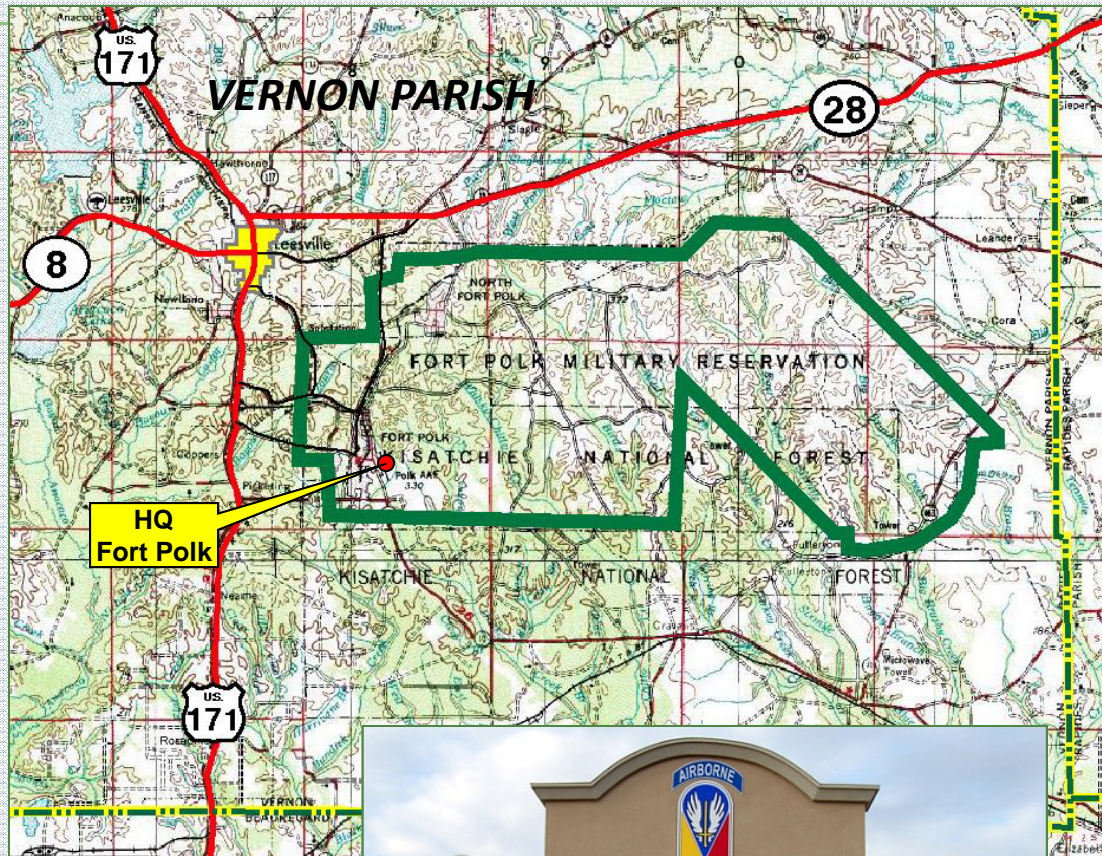
# Authorization for I-14 Portion of System



# Interstate 14 Begins Here



# Fort Polk – Joint Readiness Training Center



- Largest employer in Louisiana other than state government with an annual economic impact of more than \$1.5 billion
- 8,500 military personnel; 6,300 civilian and contract employees
- Home to the Joint Readiness Training Center (JRTC), the premier light infantry graduate certification program, with 10 rotations per year of 8,000 soldiers each coming from bases around the United States





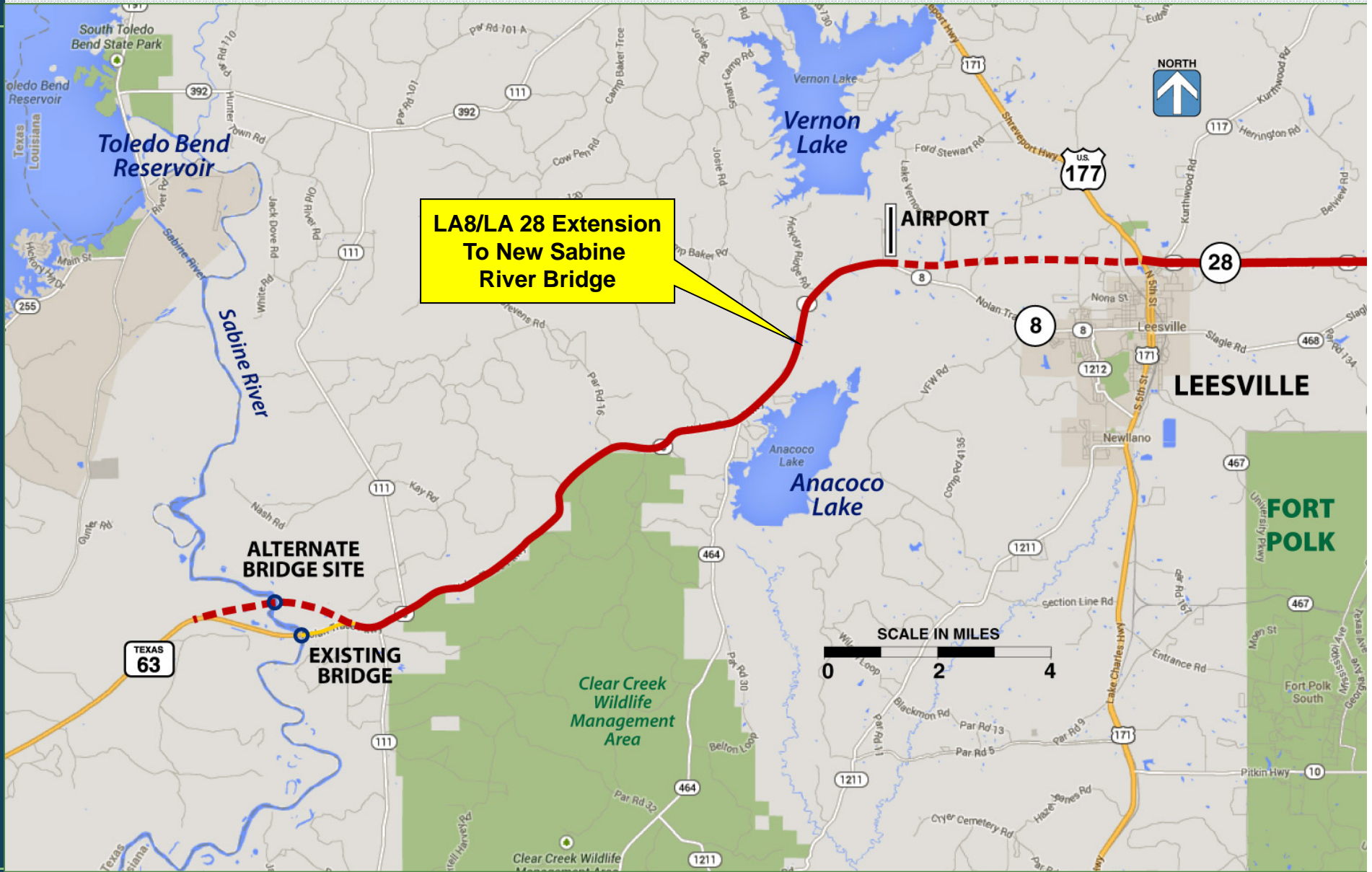
## *Construction of LA 28 West Complete*



**Then Gov. Bobby Jindal and GCSHC representatives break ground on final LA 28 segment – 2009**

- The 4-lane divided highway is now complete over the entire 50 miles between Alexandria and Leesville, home of Fort Polk
- LA 28 route across Central Louisiana is important to Fort Polk and to enhancing national security efforts
- The command general of Fort Polk has said the plan to tie Fort Polk to the interstate system is a plus with the Army

# Extending LA 28 to LA 8 & New River Bridge



## *Sabine River Bridge at Burr Ferry*



**Tucker Ferguson, P.E., TxDOT Beaumont District Engineer, provides Coalition with updates on bridge project**



- TxDOT has scheduled for funding in 2020
- Total estimate: Approximately \$19 million for initial phase
- Design started in 2015
- Environmental clearance process is underway
- Have reviewed potential alignments but no decision has been made on final bridge alignment
- A single two-lane bridge will be added that can serve as part of an interstate facility in the future when a second bridge is added

# East-West Interstate Will Link Three North-South Interstates: I-35, I-45 & I-69

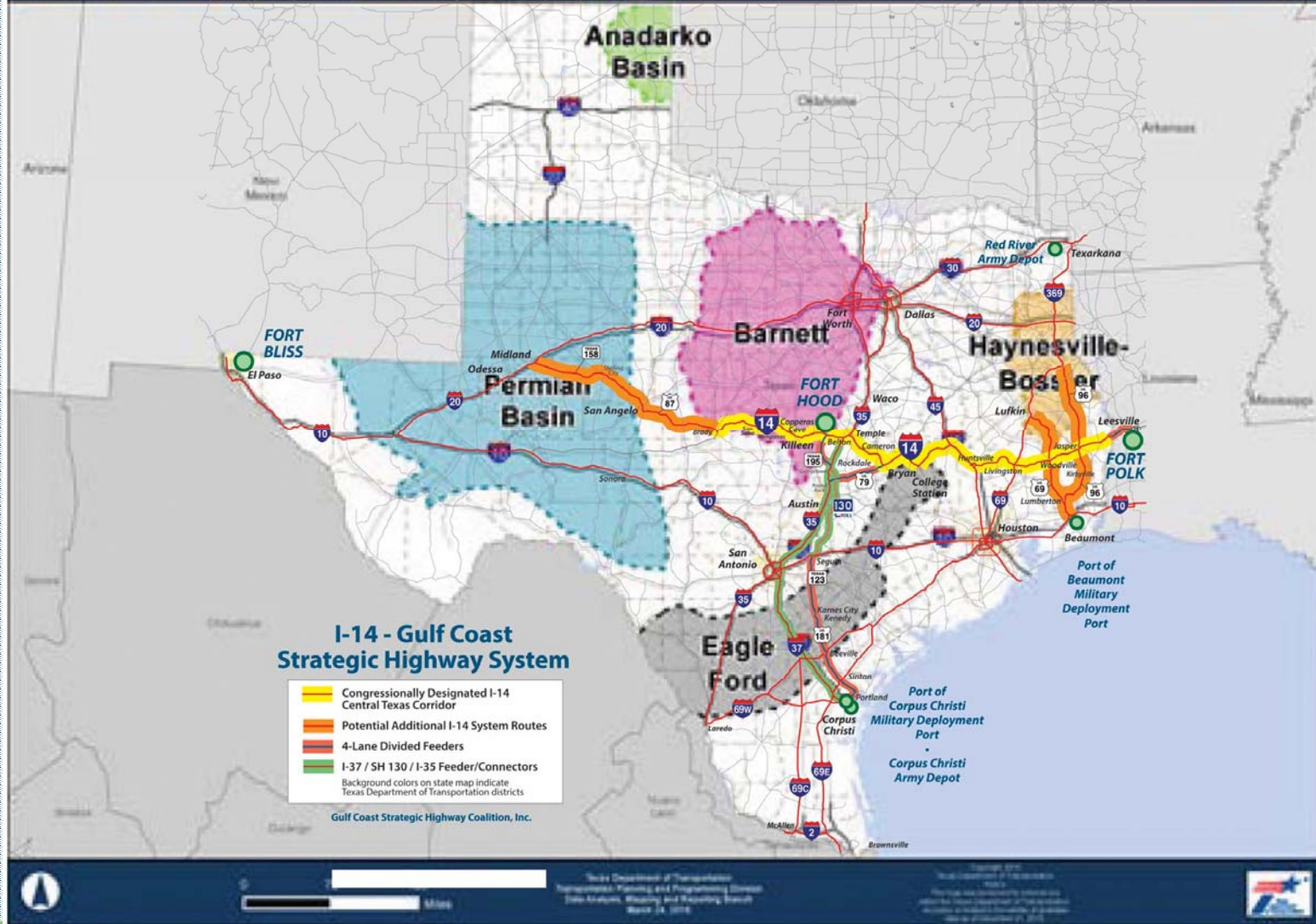


***I-14 System Will Improve Evacuation Routes From Gulf Coast***

# An Expanded I-14 Route Serves Major Oil & Gas Producing Regions

Texas Energy Sector Plays

2016



# Would Provide Routes Across Texas Outside Federal Air Quality Non-Attainment Areas



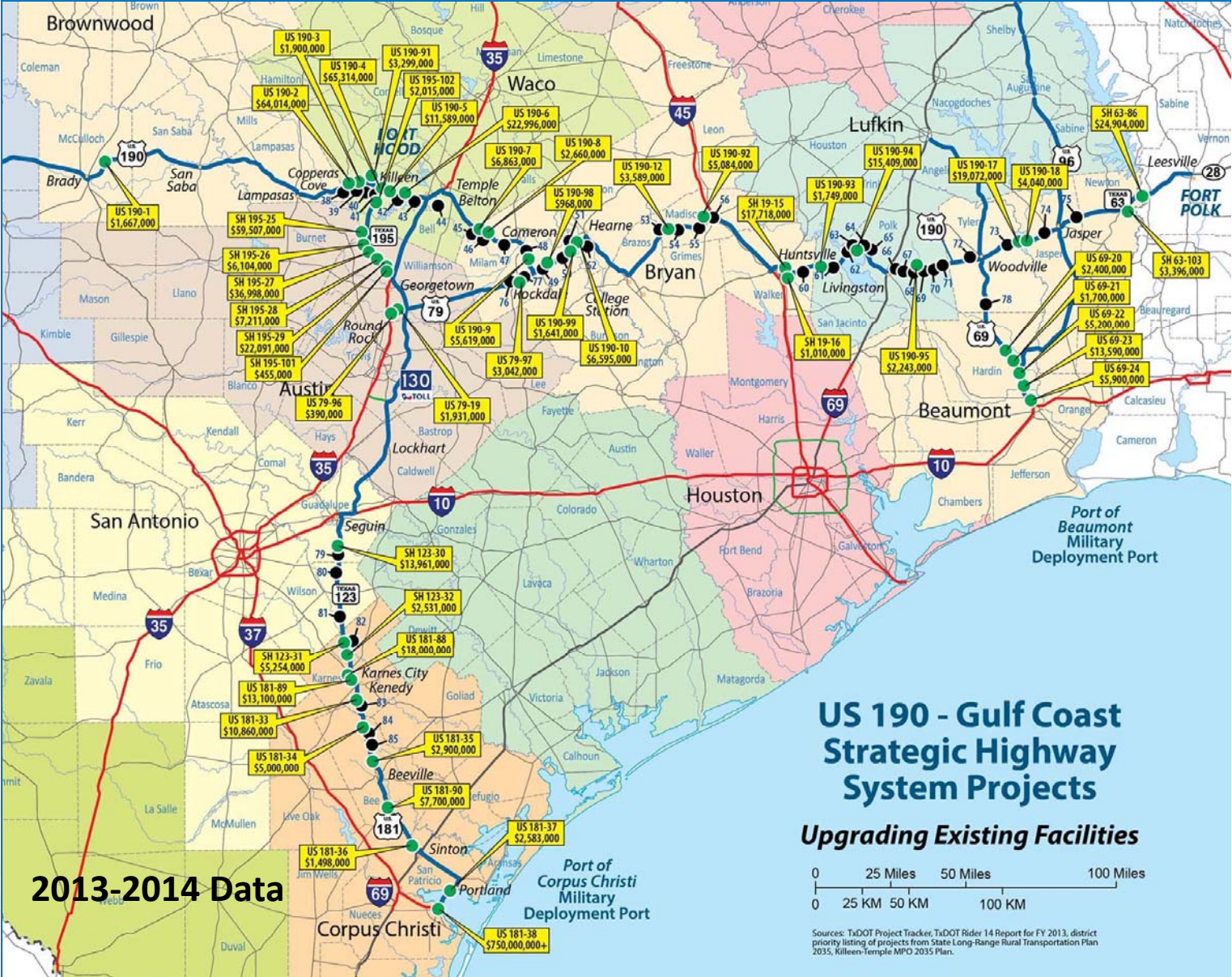


# Total \$1.35 Billion in Funded Projects

FUNDED PROJECTS			
Highway	Description	From	To
US 190	1 Roadway Rework	US 377	San Saba CL
US 190	2 Frontage Rds	Lampasas CL	Clarke Rd
US 190	3 Resurface	Lampasas CL	Copperas Cove
US 190	4 New Lanes	WV Young	WV Young
US 190	5 New Lanes	WV Young	FM 2410
US 190	6 New Lanes	FM 2470	FM 2410
US 190	81 Resurface Roadway	FM 2657	SH 9
US 190	7 Add Passing Lanes	Bell CL	1.7 W of FM 488
US 190	8 Add Passing Lanes	1.7 W of FM 488	Cameron CL
US 190	9 Repair Roadway	US 79	CR 231
US 190	10 Replace Bridge	Little Brazos River	
US 190	32 Repair Roadway	North Zulch	FM 978
SH 6	11 Interchange Improvements	FM 158	FM 2818
US 190	12 Repair Roadway	FM 2885	Loop 160
US 190	93 Safety Upgrades	Walker CL	Polk CL
US 190	94 Widen Roadway	Onalaska	FM 2457
US 190	95 Safety Improvements	US 89	FM 1276
SH 30	13 Interchange	SH 30	FM 244
SH 30	14 Overpass	FM 179	Huntsville
SH 19	15 Add Lanes	SH 30 N	I-45
SH 19	16 Safety Barriers	FM 405	SH 30
US 190	17 Replace Bridge	at Neches River	
US 190	18 Replace Bridge	Neches River	Relief
US 79	96 Traffic Signals	at FM 1469	Harrill Pkwy
US 79	97 Resurface	1.1 W US 190	US 77
US 79	98 Repair Roadway	3.0 E SH 38	SH 36
US 79	99 Repair Roadway	Robertson CL	FM 2055
US 89	20 Repair Roadway	SH 326	SH 327
US 89	21 Repair Roadway	US 156	Jefferson CL
US 89	22 Resurface	Frontage Rds	Dalway SH
US 89	23 Freeway Ramps	Downen	Lucas
US 89	24 Freeway Ramps	Lucas Dr	I-10
US 89	100 Add Turn Lanes	SH 138	3.4 South
SH 195	25 New Lanes	SH 138	3.4 South
US 195	26 New Lanes	3.0 E SH 38	6.25 S SH 138
SH 195	27 New Lanes	6.25 S SH 138	9.1 S SH 138
US 195	28 New Lanes	9.1 S SH 138	9.2 S SH 138
US 195	101 Intersection Improvements	at Sun City Blvd.	
SH 195	29 New Lanes	9.2 S SH 138	To I-35
SH 195	102 Resurface Roadway	US 130	FM 2470
SH 123	30 Widen Roadway	Wilson CL	Sequin
SH 123	31 Widen Roadway	SH 80	Wilson CL
SH 123	32 Repair Roadway	Cibola Ck Bridge	Wilson CL
US 181	33 New Lanes	Bee CL	S of Kennedy
US 181	34 Repair Roadway	FM 144	2 Miles South
US 181	35 Repair Roadway	FM 144	2 Miles South
US 181	36 Add Passing Lanes	Karnes CL	FM 1465
US 181	37 Roadway at Skidmore	SH 359	1 Mile South
US 181	38 Add Passing Lanes	FM 1465	2.5 MI Beaville
US 181	36 Resurface	Bee CL	SH 89
US 181	37 Roadway Repair	Moore Ave	Turnaround
US 181	37 Mill/CR BRIDGE Replace	Beach St	SH 44 Bus
SH 63	86 New Sabine River Bridge	At Burrs Ferry Crossing	
SH 63	103 Resurface Roadway	FM 692	Sabine River

Total Funded Projects - \$1.35 Billion

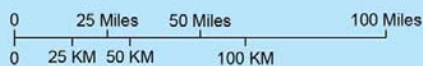
UNFUNDED PROJECTS			
Highway	Description	From	To
US 190	38 Widen to 4-lane divided	Copperas Cove	Lampasas CL
US 190	39 Copperas Cove Relief Rte	Kemper	FM 2657
US 190	40 Reconstruct Intersection	FM 172	Interchange
US 190	41 Upgrade Interchange	SH 195	
US 190	42 Add freeway lanes	FM 2410	Nola Ruth-NH
US 190	43 Add freeway lanes	Nola Ruth	I-35
US 190	44 East Extension (2 lanes)	Bell CL	SH 36190 East
US 190	45 4-lane & rail overpass	1.7 W of FM 488	2 E Bell CL
US 190	46 4-lane divided rural	US 77	2.7 E SH 36
US 190	47 4-lane divided rural	US 77	US 79
US 190	48 Widen to 4-lane divided	US 77	US 79
US 190	49 Milano Relief Route	SH 36	2.7 E SH 36
US 190	50 Widen to 4-lane divided	2.7 E SH 36	Robertson CL
US 190	51 Widen to 4-lane divided	Millam CL	FM 50
US 190	52 Hearne Relief Route	SH 4	US 19079 to west
US 190	53 Widen to 4-lane divided	Navasota River	FM 39
US 190	54 Widen to 4-lane divided	FM 39	3.1 miles east
US 190	55 Widen to 4-lane divided	3.1 E FM 39	Millamville
US 190	56 Widen to 4-lane divided	SH 90	I-45
SH 30	57 Widen to 4-lane divided	Navasota River	SH 90
SH 30	58 Widen to 4-lane divided	SH 90	Walker CL
SH 30	59 Widen to 4-lane divided	Grimes CL	FM 1791
US 190	60 Widen to 4-lane divided	SH 19	San Jacinto CL
US 190	61 Widen to 4-lane divided	Point Blank	Lake Livingston
US 190	62 New Bridge for 4-lane	at Lake Livingston	
US 190	63 Add Passing Lanes	Onalaska	FM 2457
US 190	64 Widen to 4-lane divided	Lake Livingston	Sandy Creek
US 190	65 Widen to 4-lane divided	Sandy Creek	2.5 W of Livingston
US 190	66 New 4-lane highway	B-59	2.6 E Livingston
US 190	67 Widen and upgrade	SH 146	6.9 MI East
US 190	68 Add Passing Lanes	End of 4-lane	FM 1276
US 190	69 Widen to 4-lane divided	7 E Livingston	FM 1276
US 190	70 Widen to 4-lane divided	FM 1276	FM 2500
US 190	71 Widen to 4-lane divided	FM 2500	US 69
US 190	72 Widen to Super2	Polk CL	3.3 W US 69
US 190	73 Widen to Super2	Woodville	Jasper CL
US 190	74 Widen to Super2	US 69	SH 63
US 190	75 Widen to Super2	1.6 E SH 63	Newton CL
US 79	76 Rockdale Relief Route	W of Rockdale	E of Rockdale
US 79	77 Milano Relief Route	W of SH 63	Processed Relief R
US 69	78 Widen to 4-lane divided	Black Creek	Hardin CL
SH 123	79 Widen to 4-lane divided	FM 486	Wilson CL
SH 123	80 Widen to 4-lane divided	Guadalupe CL	Stockdale
SH 123	81 Widen to 4-lane divided	Karnes CL	Stockdale
SH 123	82 Add Passing Lanes	Wilson CL	SH 80
US 181	83 Widen to 4-lane divided	Bee CL	Kennedy
US 181	84 Widen to 4-lane divided	Karnes CL	FM 1465
US 181	85 Widen to 4-lane divided	Normanna	181 Junct



2013-2014 Data

## US 190 - Gulf Coast Strategic Highway System Projects

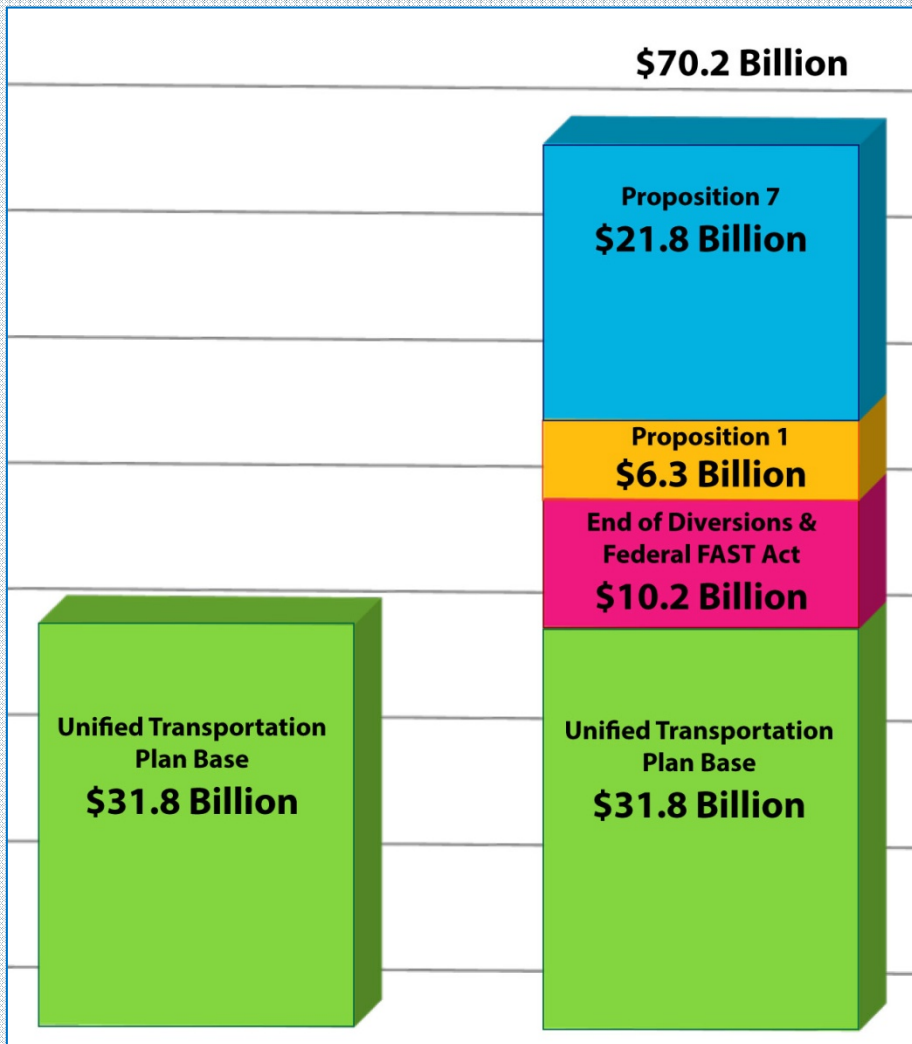
### Upgrading Existing Facilities



Sources: TxDOT Project Tracker, TxDOT Rider 14 Report for FY 2013, district priority listing of projects from State Long-Range Rural Transportation Plan 2035, Killeen-Temple MPO 2035 Plan.



# Value of FAST Act, Propositions 1 & 7 to Coalition's Highway System



**Anticipated UTP Funding 2017-2026**

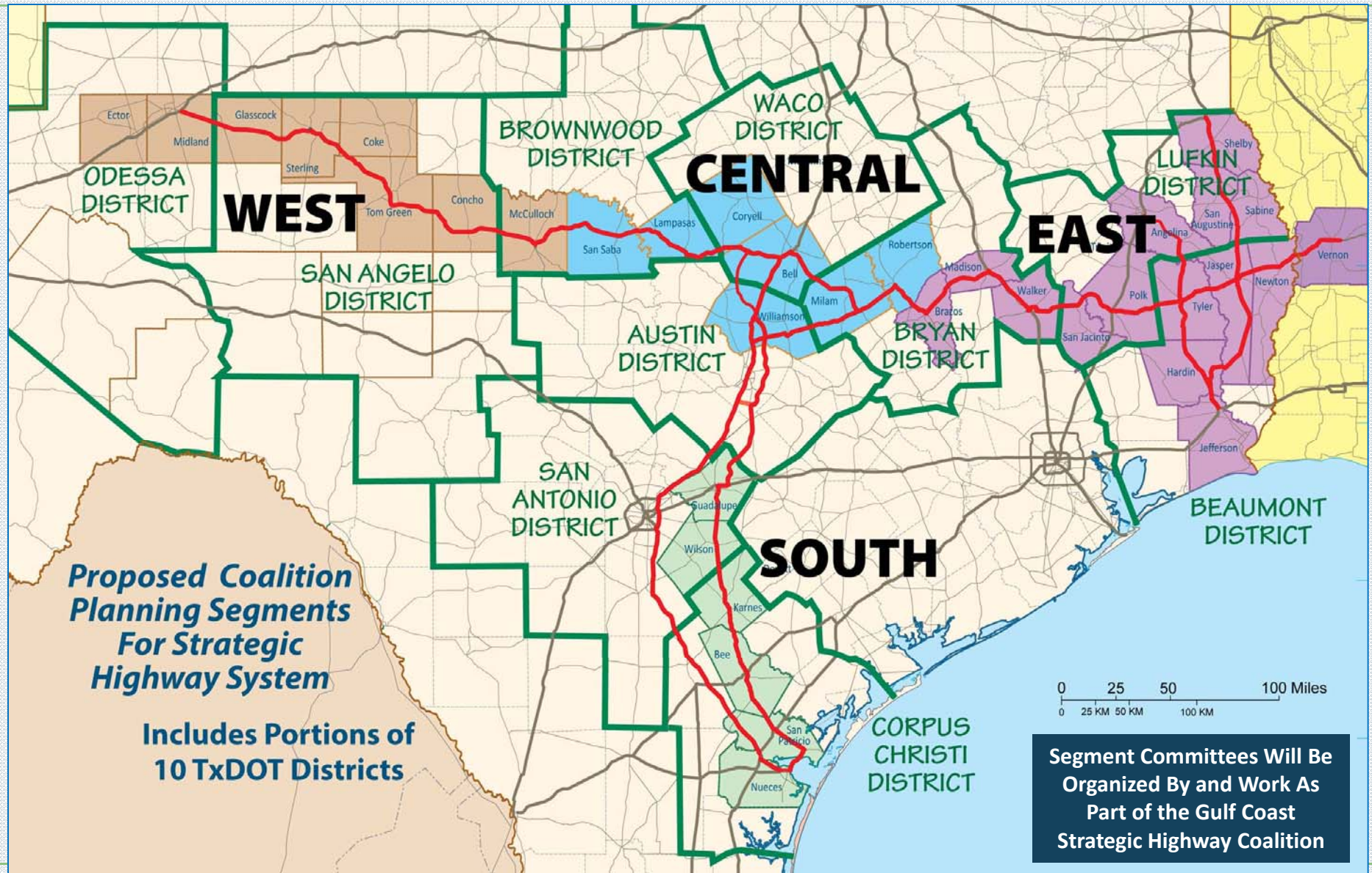
- UTP reflects anticipated doubling of highway funding over next 10 years
- Need to support planning and environmental for specific projects
- Will work with TxDOT Districts and MPOs to identify and prioritize projects and get them into UTP
- TxDOT Districts on System

Beaumont	San Angelo
Lufkin	Odessa
Bryan	Austin
Waco	San Antonio
Brownwood	Corpus Christi

- MPOs on System

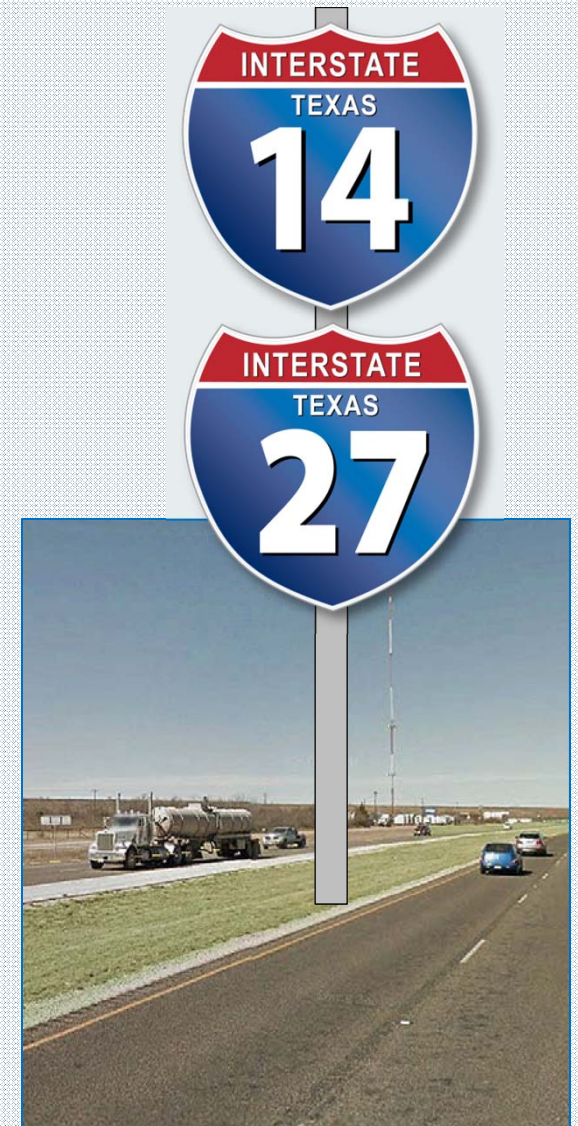
Midland-Odessa  
 San Angelo  
 Killeen-Temple  
 Bryan-College Station  
 Corpus Christi  
 Beaumont-Port Arthur

# Next Step – Coalition to Form Segment Committees



## *I-14/I-69 Impact on Extension of I-27*

- I-14 provides concurrent route for about 110 miles of the Ports-to-Plains route from Midland to San Angelo
  - Concurrent interstates exist around the country. Examples: I-10 and I-45 Houston; I-69 and I-25 in Kentucky; I-69 and I-55 south of
- Improved connection to I-35 and I-45 corridors in Central Texas will increase traffic counts and raise priority of projects on I-14 and I-27 routes in West Texas



## *Lessons Learned: I-69 and I-14*

- Tell your story
- Have a consistent champion for the I-27 vision
- Prepare yourself to persist in a generational effort
- Concentrate on local involvement and build political constituency for local projects
- Recognize money is not available for long rural projects and focus on smaller incremental priorities
- Focus on freight and safety
- Utilize the strength of your MPOs (Odessa-Midland and San Angelo) to build urban area projects that will eventually be a concurrent part of I-27 and I-14



# *Working Together*

- Ports-to-Plains, the I-14/Gulf Coast Coalition plus cities and counties should present unified front working with TxDOT on planning and building overlapping upgrades and interstate projects between Midland and San Angelo
- Nothing happens if there is not enough funding. Continue working with other transportation advocates for more highway funding in Washington and in your state capital
- All of our organizations are part of the successful Transportation Advocates of Texas where Michael Reeves is board chairman-elect





# Gulf Coast Strategic Highway Coalition

Connecting U.S. Army Facilities and Texas Strategic Ports



US 190 - KILLEEN

For Information Contact: **Gary Bushell**, GCSHC Executive Director – (512) 478-6661; [gebushell@aol.com](mailto:gebushell@aol.com)

**John Thompson**, GCSHC Chairman, Former County Judge, Polk County – (936) 328-6444; [zimmercreekconsultantsllc@gmail.com](mailto:zimmercreekconsultantsllc@gmail.com)