

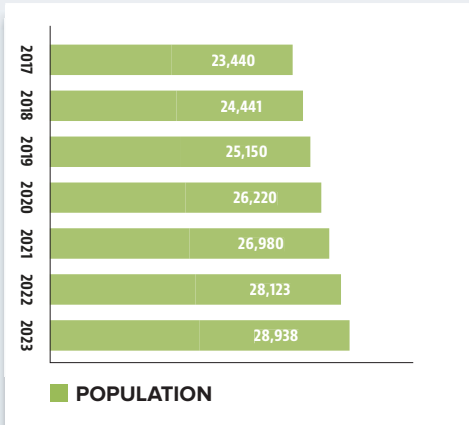
# DICKINSON GROWTH IMPACT ANALYSIS



## GROWTH DRIVES CITY NEEDS

## PROJECTED OPERATIONAL IMPACTS

### POPULATION

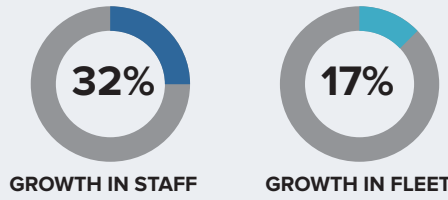


**27%**  
POPULATION INCREASE  
BY 2023\*

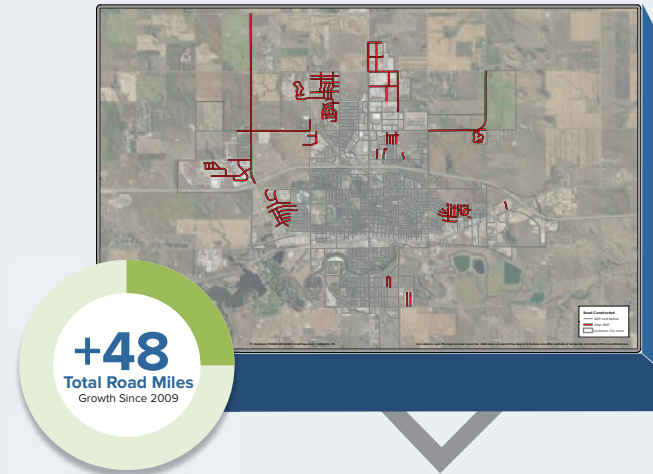
**5,500**  
TOTAL ADDITIONAL  
POPULATION BY 2023

Population growth is expected to place significant additional service demands on the City of Dickinson, including the expansion of infrastructure and operations that will be required to meet the needs of the community.

\*Based on 3.5% projected average annual growth



**\$10.8M**  
TOTAL INCREMENTAL NEW ANNUAL  
OPERATING COSTS BY 2023 (ABOVE  
2017 BUDGET LEVELS)



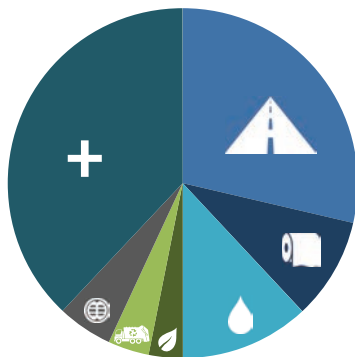
**+17%**  
EXPECTED ROAD MILES  
GROWTH BY 2023

## CAPITAL IMPROVEMENT NEEDS

CATEGORY	Year (Estimated Costs in Millions)		
	Total 2017-2023 Project Costs	Less Preliminary Assigned Funding Sources	Remaining
Transportation	\$61.0	\$0.0	\$61.0
Wastewater	\$20.0	\$0.0	\$20.0
Water	\$25.4	(\$15.2)	\$10.2
Parks	\$6.7	\$0.0	\$6.7
Sanitation	\$8.1	\$0.0	\$8.1
Stormwater	\$10.8	\$0.0	\$10.8
Other Facilities/Admin	\$80.9	\$0.0	\$80.9
<b>Totals</b>	<b>\$212.9</b>	<b>\$(15.2)</b>	<b>\$197.7</b>

### Preliminary Identified Funding Sources

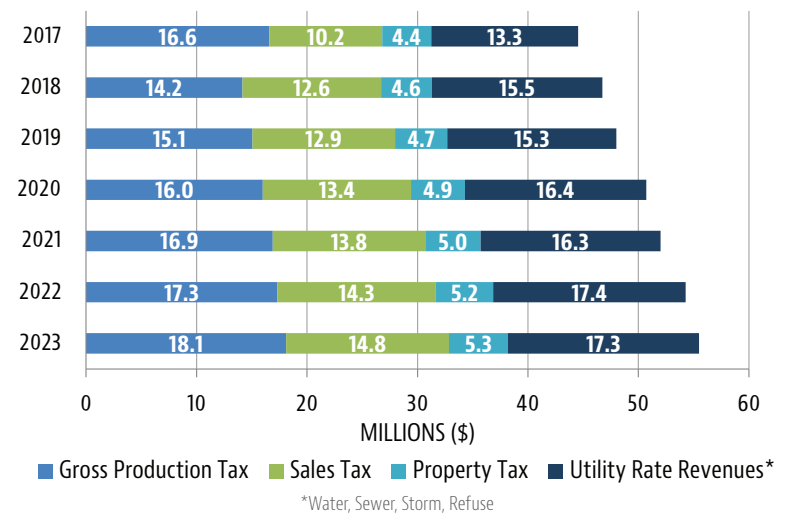
- State Projects Shown at Local Cost-Share Level
- State Water Commission Funding on Applicable Water Projects



### Key Capital Needs

- Water/Sewer Extensions to Airport
- Events Center Development
- Trunk Sewer Expansion for Further Northside Development
- Trunk Water Transmission and Storage Improvements for Further Northside Development

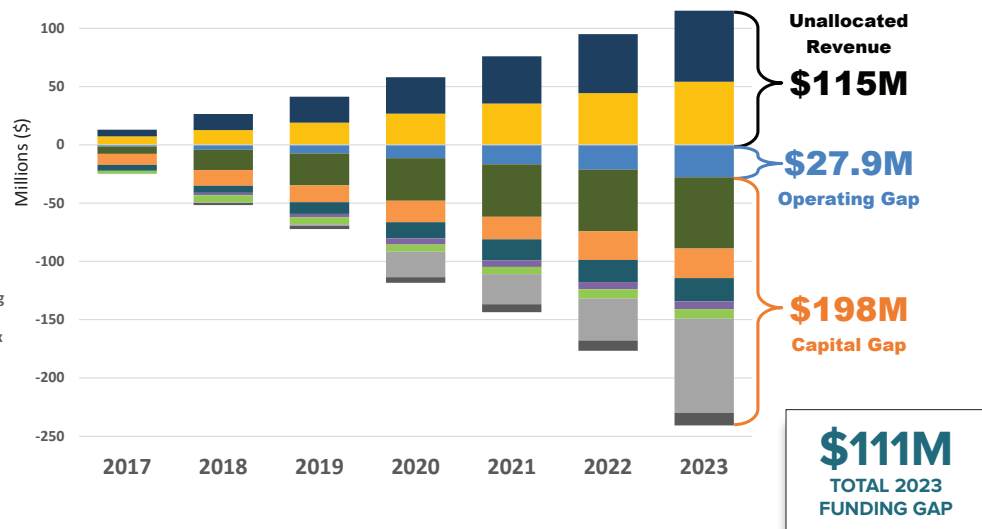
## MAJOR REVENUE SOURCE PROJECTIONS



## FUNDING GAP OF \$111M PROJECTED BY 2023

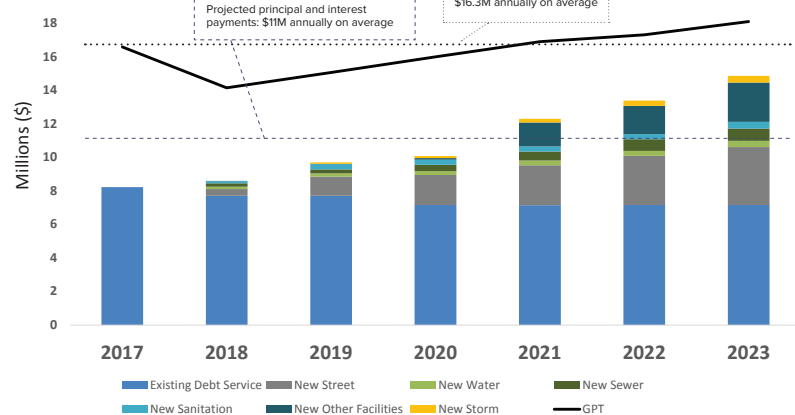
Given all projected revenues and expenditures, application of preliminary infrastructure funding sources, and cash funding of remaining capital projects, a total 2023 net funding gap of \$111M has been identified.

### CASH BASED FUNDING GAP ANALYSIS



## ANNUAL PRINCIPAL AND INTEREST (EXISTING AND NEW) VERSUS GPT REVENUE

Given the total capital funding needs identified, an illustrative debt profile was developed if the City were to access typical debt instruments for all projected projects in excess of \$1M dollars.



**TOTAL PROJECTED DEBT LOAD** > 2016: \$89.1M  
2023: \$201M

## DICKINSON IMPACT ANALYSIS CONTACT INFORMATION

**City** Shawn Kessel, City Administrator  
shawn.kessel@dickinsongov.com  
701.456.7739

**Engineering** Craig Kubas  
craig.kubas@dickinsongov.com  
701.456.7715

**Financial** Ryan Graf, AE2S Nexus  
ryan.graf@ae2s.com  
701.746.8087

**WDEA** Geoff Simon, Executive Director  
Geoff@ndenergy.org  
701.527.1832