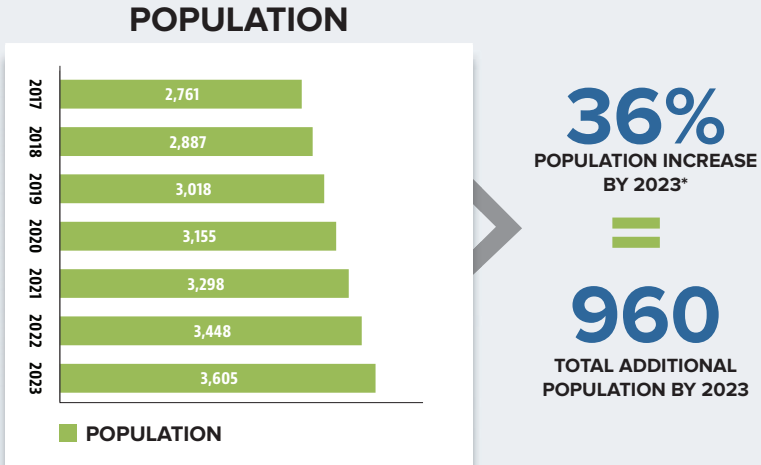


# STANLEY GROWTH IMPACT ANALYSIS



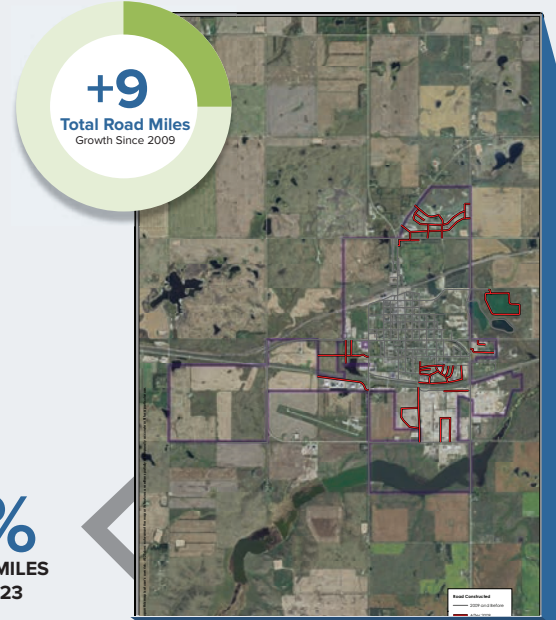
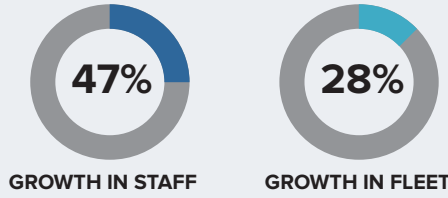
## GROWTH DRIVES CITY NEEDS

## PROJECTED OPERATIONAL IMPACTS



Population growth is expected to place significant additional service demands on the City of Stanley, including the expansion of infrastructure and operations that will be required to meet the needs of the community.

\*Based on 4.5% projected average annual growth

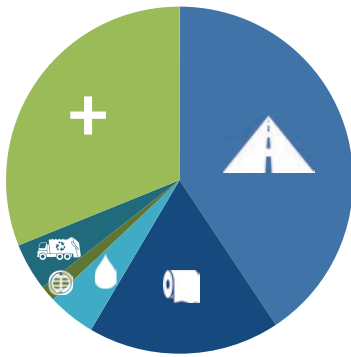


## CAPITAL IMPROVEMENT NEEDS

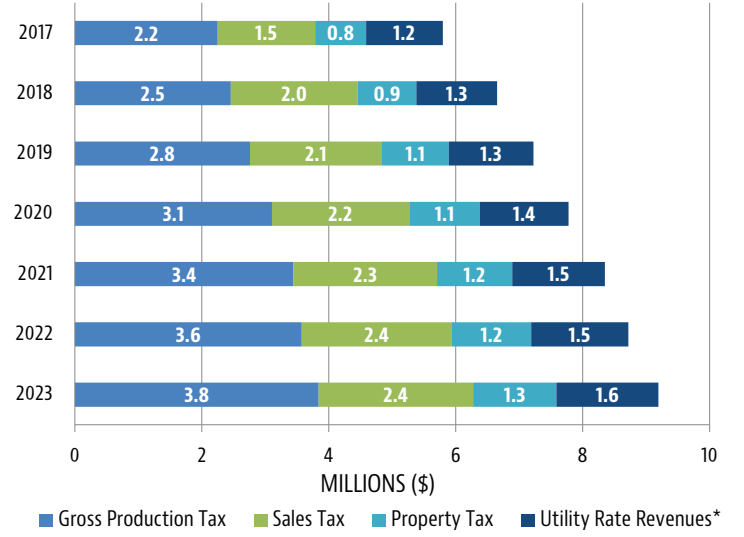
CATEGORY	Year (Estimated Costs in Millions)		
	Total 2017-2023 Project Costs	Less Preliminary Assigned Funding Sources	Remaining
Transportation	\$36.5	(\$3.5)	\$33.0
Wastewater	\$16.0	(\$2.1)	\$14.0
Water	\$4.0	(\$3.5)	\$0.5
Stormwater	\$1.3		\$1.3
Landfill	\$4.0		\$4.0
Other Facilities/Admin	\$27.9		\$27.9
<b>Totals</b>	<b>\$90M</b>	<b>(\$9M)</b>	<b>\$81M</b>

### Preliminary Identified Funding Sources

1. State Water Commission Funding on Applicable Water Projects
2. Special Assessments on Applicable Projects



## MAJOR REVENUE SOURCE PROJECTIONS



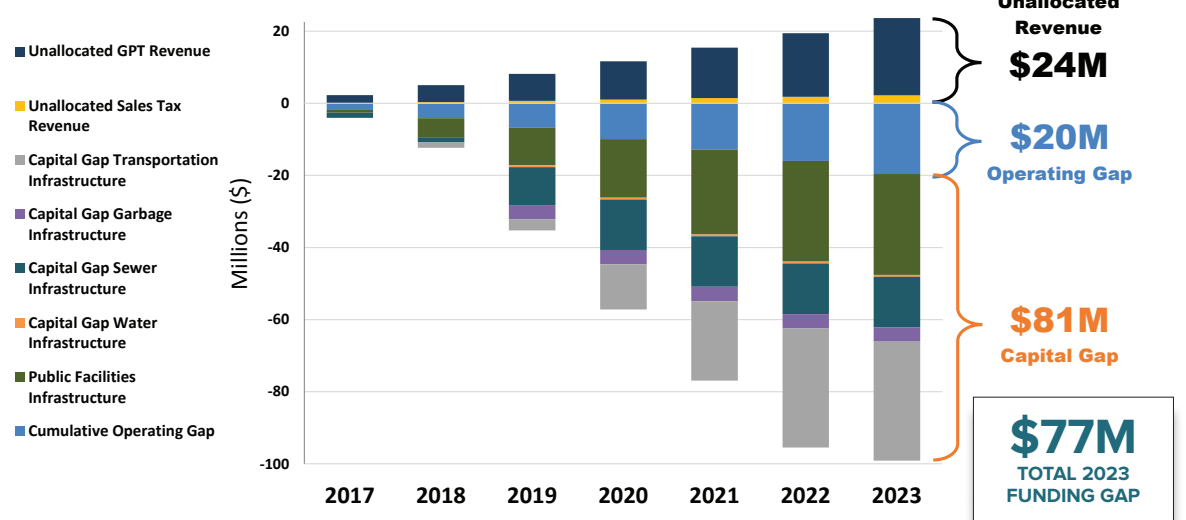
## FUNDING GAP OF \$77M PROJECTED BY 2023

Given all projected revenues and expenditures, application of preliminary infrastructure funding sources, and cash funding of remaining capital projects a total 2023 revenue gap of \$77M has been identified.

### KEY CAPITAL NEEDS

- Implementation of Mechanical Wastewater Treatment to Accommodate Further Population Growth
- Bypass and Frontage Road Improvements to Accommodate Truck Traffic Around the City
- Recreational Improvements, Including an Indoor Recreation Center and Trail System Expansion
- City Hall Replacement to Accommodate Growing Administrative Needs of the City

## CASH BASED FUNDING GAP ANALYSIS



## STANLEY IMPACT ANALYSIS CONTACT INFORMATION

**City** Allyn Sveen, City Auditor  
allyn@stanleynd.us  
701.628.2225

**Engineering** Terry Lukan, Brosz  
terryl@broszengineering.com  
701-628-3340

**Financial** Nikki Jacobi, AE2S Nexus  
nicole.jacobi@ae2s.com  
701.746.8087

**WDEA** Geoff Simon, Executive Director  
Geoff@ndenergy.org  
701.527.1832