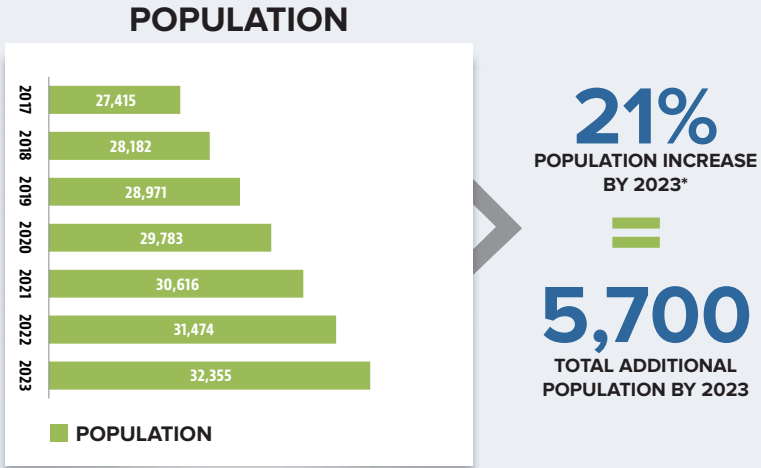


WILLISTON GROWTH IMPACT ANALYSIS



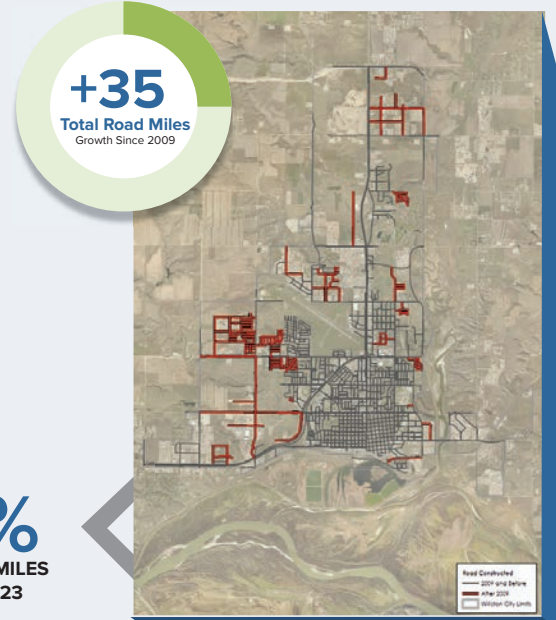
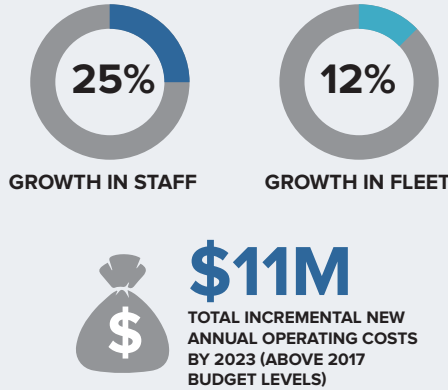
GROWTH DRIVES CITY NEEDS



Population growth is expected to place significant additional service demands on the City of Williston, including the expansion of infrastructure and operations that will be required to meet the needs of the community.

*Based on 2.8% projected average annual growth

PROJECTED OPERATIONAL IMPACTS

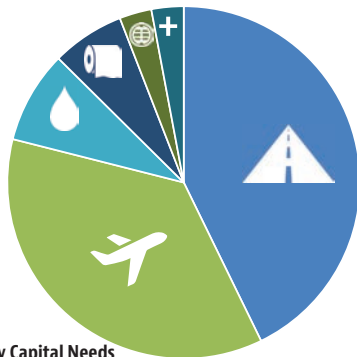


CAPITAL IMPROVEMENT NEEDS

CATEGORY	Year (Estimated Costs in Millions)		
	Total 2017-2023 Project Costs	Less Preliminary Assigned Funding Sources	Remaining
Transportation	\$283.74	(\$138.90)	3,4
Wastewater	\$44.27	(\$36.49)	1,3
Water	\$56.20	(\$34.10)	2,3
Stormwater	\$5.98	(\$2.60)	3
Airport	\$240.00	(\$180.00)	5
Other Facilities/Admin	\$19.55	(\$0.20)	3
Totals	\$650M	(\$393M)	\$257M

Preliminary Identified Funding Sources

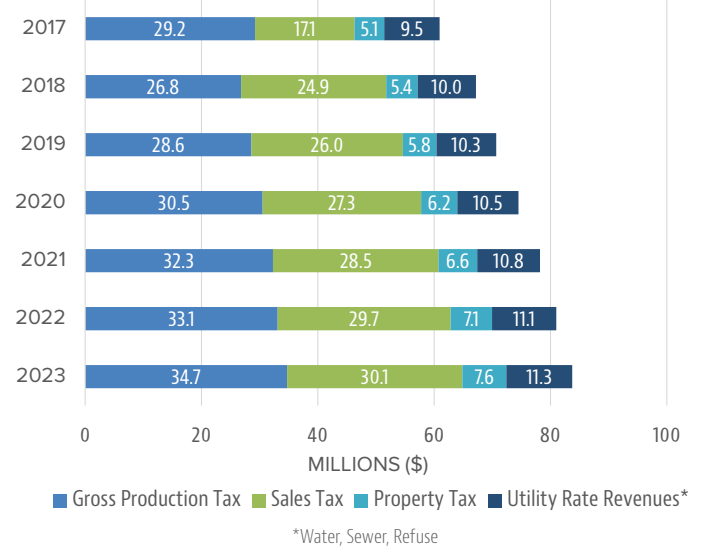
1. SRF Loan backed by GPT Revenue for WRRF
2. State Water Commission Funding on Applicable Water Projects
3. Special Assessments on Applicable Projects
4. State (SOI & Urban) Funding on Applicable Transportation Projects
5. FAA & NDAC Grant Funds



Key Capital Needs

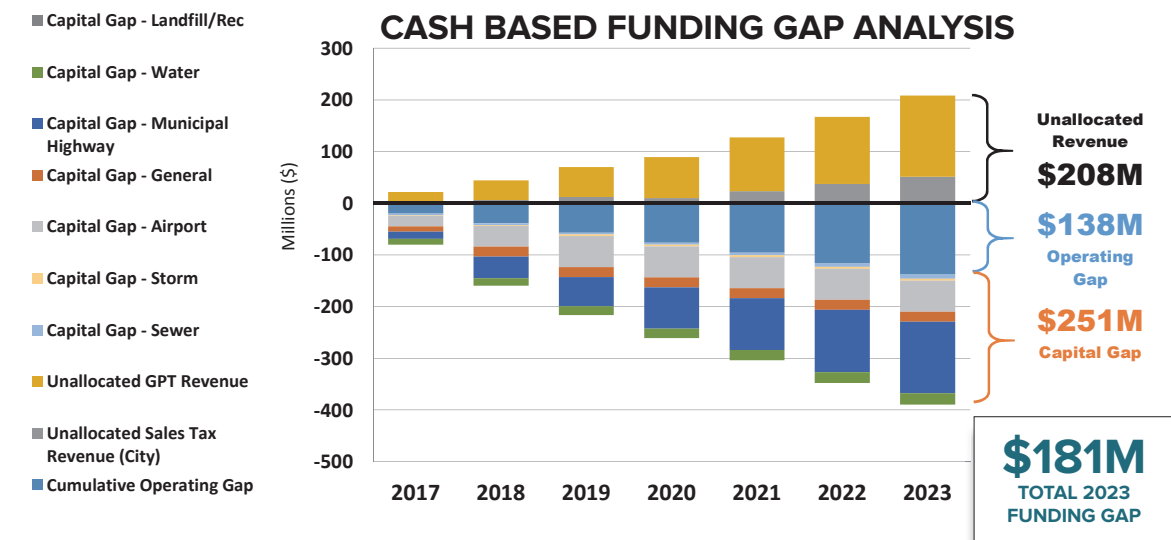
- Major Airport Replacement Project and Associated Redevelopment of Existing Sloulin Field
- Trunk Transportation Corridor Expansions into Future Growth Areas of the City, Including Improved Airport Access
- Water/Sewer Extensions and Water Storage Improvements for Future Growth Areas of the City
- Public Works Facility Expansion to Accommodate Significant Staff and Fleet Growth

MAJOR REVENUE SOURCE PROJECTIONS



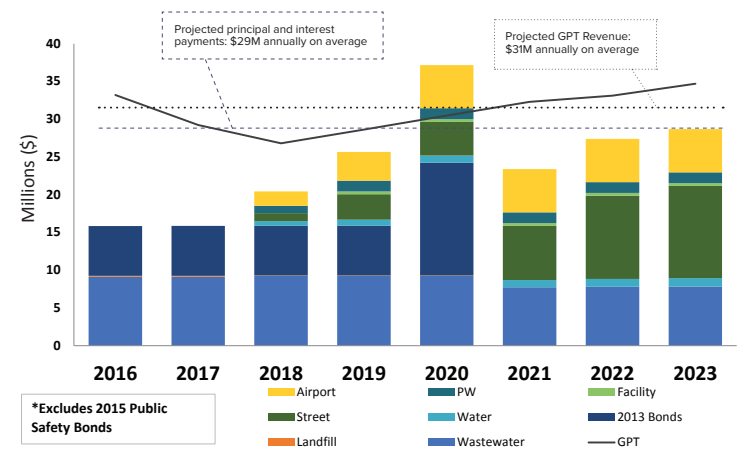
FUNDING GAP OF \$181M PROJECTED BY 2023

Given all projected revenues and expenditures, application of preliminary infrastructure funding sources, and cash funding of remaining capital projects a total 2023 funding gap of \$181M has been identified.



ANNUAL PRINCIPAL AND INTEREST (EXISTING AND NEW) VERSUS GPT REVENUE

Given the total capital funding needs identified, an illustrative debt profile was developed if the City were to access typical debt instruments for all projected projects in excess of \$1M dollars.



TOTAL PROJECTED DEBT LOAD → 2016: \$222M
2023: \$417M

WILLISTON IMPACT ANALYSIS CONTACT INFORMATION

City Dave Tuan, City Administrator
davidt@ci.williston.nd.us
701.577.8100

Engineering Bob Moberg, AE2S
bob.moberg@ae2s.com
701.774.3080

Financial Nikki Jacobi, AE2S Nexus
nicole.jacobi@ae2s.com
701.746.8087

WDEA Geoff Simon, Executive Director
Geoff@ndenergy.org
701.527.1832