

Northeast Rural Road Resurfacing Projects

Location

- Select locations throughout Region 4 (refer to map)
- Cheyenne, Lincoln, Morgan, Sedgwick, Weld, and Yuma counties
- Eastern and Upper Front Range Transportation Planning Regions

Description

Resurfacing of over 72 miles of highway in Region 4. Reconstruction of 12 miles of I-70 and I-76.

Project Cost

- \$122.81 million total
- Projects range from \$3 million to \$29 million
- Priority project for years 5-10 of 10-Year Strategic Project Pipeline

What We Heard

“The condition of the pavements on 71 need to be addressed. They are to the point where there are considered unsafe.”

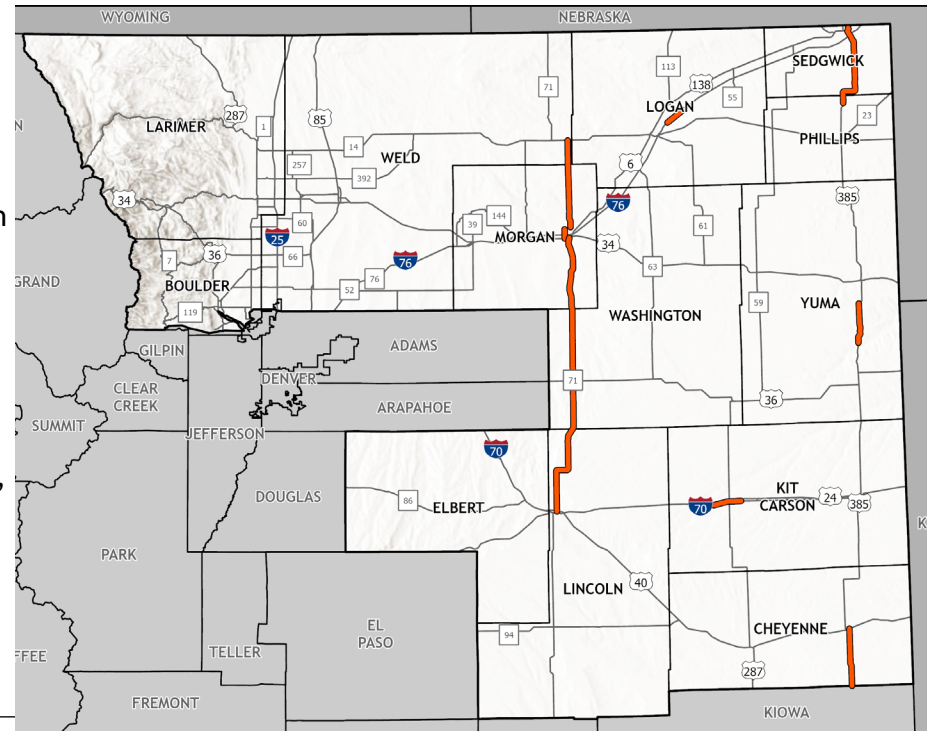
“The pavement here is deteriorating due to increased traffic. The road is continually getting deep pot holes. Safety needs to always be a priority.”

Urgent Need

Many corridors in Region 4 have sections of low drivability life caused by deteriorating pavement condition. Driving on rough or deteriorated roadways costs each Colorado driver approximately \$468 a year in additional vehicle operating costs. Rough roads contribute to a decrease in fuel efficiency, wear and tear on tires, and can increase the need for minor repairs like strut replacements and realignments.

Benefits If Funded

Roads that are free of potholes, cracks, and other damage improve mobility by supporting higher travel speeds and minimize crashes caused by drivers swerving to avoid damaged sections of highway. Well-maintained shoulders provide a safe area of refuge for drivers who encounter an incident on the roadway and can also provide a safer way for bicyclists to travel independently of motorized vehicles.



See next page for a list of rural road resurfacing projects

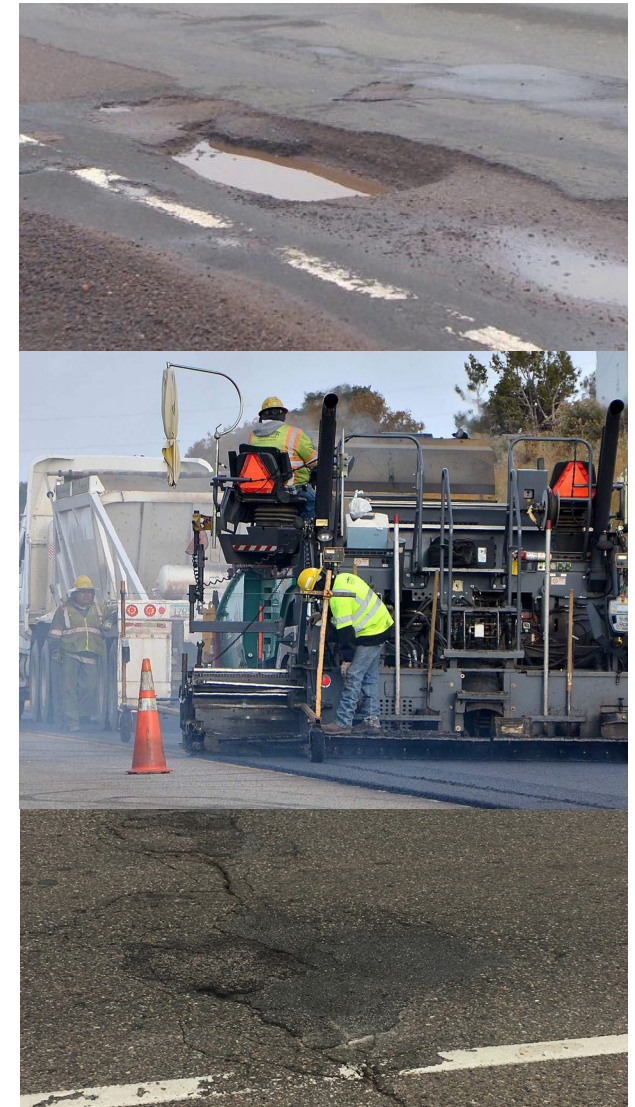
Resurfacing the highway improves the drivability life. Making minor repairs to roads (i.e., resurfacing) before they require major repairs is cost-effective. According to a study done by the Transportation Research Board, making major repairs to roadways costs four times more than resurfacing them.

Northeast Rural Road Resurfacing Projects (Continued)

Planning Project ID	TPR	County	Highway	Location
2683*	EA	Logan	I-76	I-76 east of Sterling (Part 2 Slabs and Diamond Grind)
2684*	EA	Kit Carson	I-70	Resurfacing select segments of I-70 between Seibert and Stratton
2685	EA	Yuma	US 385	US 385 between Sand Creek and County Road 29
2686	EA	Cheyenne	US 385	US 385 south of Cheyenne Wells
2687	EA	Sedgwick	US 385	US 385 south of Julesburg
2688	UFR	Morgan, Weld	CO 71	CO 71 south of CO 14
2689	UFR	Morgan	CO 71	CO 71 north of Brush

TPR = Transportation Planning Region EA = Eastern UFR = Upper Front Range

*Interstate Reconstruction Projects



(October 2021)



COLORADO
Department of Transportation